

# CD44 Recombinant Monoclonal Antibody [BLR038F]

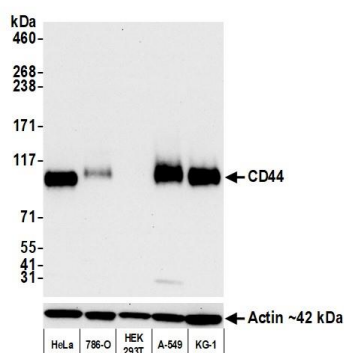
Rabbit Recombinant Monoclonal

Purified		Protein ID	NP_000601.3
Catalog No.	A700-038-T	GeneID	960
Lot No.	A700-038-T-2		

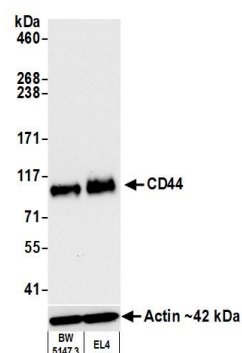


<b>APPLICATIONS</b>	WB, IP, IHC, ICC, F
<b>SPECIES REACTIVITY</b>	Human, Mouse
<b>AMOUNT</b>	10 µl (5+ tests)
<b>CONCENTRATION</b>	50 µg/ml
<b>STORAGE/SHELF LIFE</b>	2 – 8° C / 1 year from date of receipt
<b>PHYSICAL STATE</b>	Liquid
<b>BUFFER</b>	Borate Buffered Saline (BBS) pH 8.2 with 0.1% BSA and 0.09% Sodium Azide
<b>ISOTYPE</b>	IgG
<b>CLONE #</b>	BLR038F
<b>ORIGIN</b>	USA
<b>PRODUCTION PROCEDURES</b>	Recombinant antibody was purified from cell culture supernatant.  Immunogen was a peptide representing a region between residue 700 and the C-terminus (residue 742) of human CD44 using the numbering given in entry NP_000601.3 (Gene ID 960).
<b>APPLICATIONS</b>	Centrifuge tube to remove product from lid. Optimal working dilutions should be determined experimentally by the investigator. Prepare working dilution immediately before use.  Western Blot                      1:1000  Immunoprecipitation            20 µl/1mg lysate  Immunohistochemistry        1:100 to 1:500. Epitope retrieval with citrate buffer pH6.0 is recommended for FFPE tissue sections.  Immunocytochemistry        1:100 to 1:500. Epitope retrieval with citrate buffer pH6.0 is recommended for FFPE cell sections.  Flow Cytometry                1 µl per 1 X 10 <sup>6</sup> cells
<b>IHC HUMAN CONTROLS</b>	Breast Carcinoma, Head and Neck Squamous Cell Carcinoma, Lung Carcinoma, Skin Carcinoma, 786-O Cells, A-172 Cells, A-549 Cells, HCT 116 Cells, HeLa Cells
<b>ADDITIONAL INFO</b>	<a href="https://www.bethyl.com/product/A700-038-T">https://www.bethyl.com/product/A700-038-T</a> Use the link above to view SDS, a current list of citations, and other product specific information.

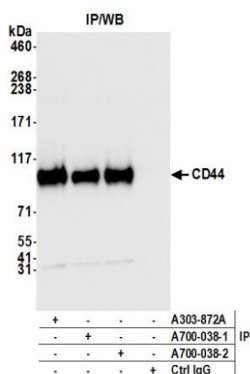
This document certifies that this product has met all of the quality control standards defined by Bethyl Laboratories, Inc.  
Brian McWilliams, PhD Date: May 13, 2021



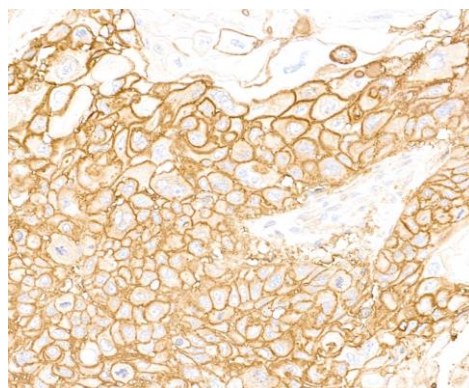
**Detection of human CD44 by western blot.** *Samples:* Whole cell lysate (10 µg) from HeLa, 786-O, HEK293T, A-549, and KG-1 cells prepared using NETN lysis buffer. *Antibody:* Rabbit anti-CD44 recombinant monoclonal antibody [BLR038F] (A700-038-T lot 2) used at 1:1000. *Secondary:* HRP-conjugated goat anti-rabbit IgG (A120-101P). Chemiluminescence with an exposure time of 3 seconds.



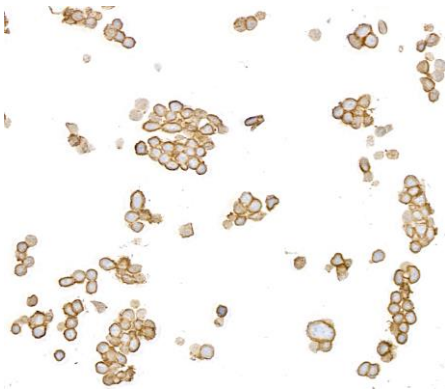
**Detection of mouse CD44 by western blot.** *Samples:* Whole cell lysate (10 µg) from BW5147.3 and EL4 cells prepared using NETN lysis buffer. *Antibody:* Rabbit anti-CD44 recombinant monoclonal antibody [BLR038F] (A700-038-T lot 2) used at 1:1000. *Secondary:* HRP-conjugated goat anti-rabbit IgG (A120-101P). Chemiluminescence with an exposure time of 10 seconds.



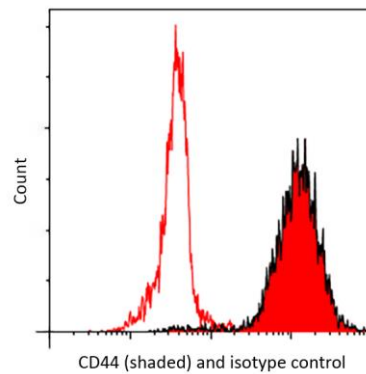
**Detection of human CD44 by western blot of immunoprecipitates.** *Samples:* Whole cell lysate (1.0 mg per IP reaction; 20% of IP loaded) from HeLa cells prepared using NETN lysis buffer. *Antibodies:* Rabbit anti-CD44 recombinant monoclonal antibody [BLR038F] (A700-038-T lot 2) used for IP at 20 µl per reaction. CD44 was also immunoprecipitated by a previous lot of this antibody (A700-038 lot 2) and another rabbit anti-CD44 antibody A303-872A). For blotting immunoprecipitated CD44, A700-038-T was used at 1:1000. Chemiluminescence with an exposure time of 3 seconds.



**Detection of human CD44 by immunohistochemistry.** *Sample:* FFPE section of head and neck squamous cell carcinoma. *Antibody:* Rabbit anti-CD44 recombinant monoclonal antibody [BLR038F] (A700-038-T lot 2) used at 1:500. *Secondary:* HRP-conjugated goat anti-rabbit IgG (A120-501P). *Substrate:* DAB.

**Detection of human CD44 by immunocytochemistry.**

*Sample:* FFPE section of HCT 116. *Antibody:* Rabbit anti-CD44 recombinant monoclonal antibody [BLR038F] (A700-038-T lot 2) used at 1:500. *Secondary:* HRP-conjugated goat anti-rabbit IgG (A120-501P). *Substrate:* DAB.

**Detection of human CD44 by flow cytometry. *Sample:***

Hela cells were fixed in 4% formaldehyde and permeabilized with 90% methanol. *Antibody:* 1E6 cells were incubated with 1 ul of rabbit anti-CD44 recombinant monoclonal antibody [BLR038F] (A700-038-T lot 1) (red shaded) or isotype control (unshaded). *Secondary:* DyLight® 650-conjugated goat anti-rabbit IgG