

# CD44 Recombinant Monoclonal Antibody [BLR038F]

Rabbit Recombinant Monoclonal

Purified		RefSeq ID	NP_000601.3
Catalog No.	A700-038-T	Uniprot ID	P16070
Lot No.	3	GeneID	960

<b>APPLICATIONS</b>	WB, IP, IHC, ICC, IHC-IF, Flow Cyt
<b>SPECIES REACTIVITY</b>	Human, Mouse
<b>AMOUNT</b>	10 µl (5+ tests)
<b>CONCENTRATION</b>	50 µg/ml
<b>STORAGE/SHELF LIFE</b>	2 – 8°C / 1 year from date of receipt
<b>PHYSICAL STATE</b>	Liquid
<b>BUFFER</b>	Borate Buffered Saline (BBS) pH 8.2 with 0.1% BSA and 0.09% Sodium Azide
<b>ISOTYPE</b>	IgG
<b>CLONE #</b>	BLR038F
<b>ORIGIN</b>	USA
<b>PRODUCTION PROCEDURES</b>	Recombinant antibody was purified from cell culture supernatant.

Immunogen was a peptide representing a region between residue 700 and the C-terminus (residue 742) of human CD44 using the numbering given in entry NP\_000601.3 (Gene ID 960).

<b>APPLICATIONS</b>	Centrifuge tube to remove product from lid. Optimal working dilutions should be determined experimentally by the investigator. Prepare working dilution immediately before use.
	Western Blot 1:1000
	Immunoprecipitation 20 µl/mg lysate
	Immunohistochemistry 1:100 to 1:500. Epitope retrieval with citrate buffer pH6.0 is recommended for FFPE tissue sections.
	Immunocytochemistry 1:100 to 1:500. Epitope retrieval with citrate buffer pH6.0 is recommended for FFPE cell sections.
	Immunofluorescence (IHC) 1:100 to 1:500. Epitope retrieval with citrate buffer pH6.0 is recommended for FFPE tissue sections.
	Flow Cytometry Fixed in 4% formaldehyde and permeabilized with 90% methanol. 1 µl per $1 \times 10^6$ cells.

**APPLICATION NOTES** All western blot analysis is performed using 5% Milk-TBST for blocking and as antibody diluent. Primary antibody is incubated overnight.

Western blots of cell lysates are performed using Goat anti-Rabbit IgG Heavy and Light Chain Antibody (Cat. No. A120-101P).

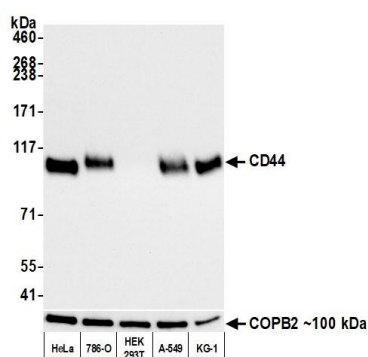
Western blots of immunoprecipitates are performed using Goat anti-Rabbit Light Chain HRP Conjugate (Cat. No. A120-113P) with 5% Normal Pig Serum (Cat. No. S100-020) added to the blocking buffer.

**IHC HUMAN CONTROLS** Breast Carcinoma, Head and Neck Squamous Cell Carcinoma, Lung Carcinoma, Skin Carcinoma, 786-O Cells, A-172 Cells, A549 Cells, HCT 116 Cells, HeLa Cells

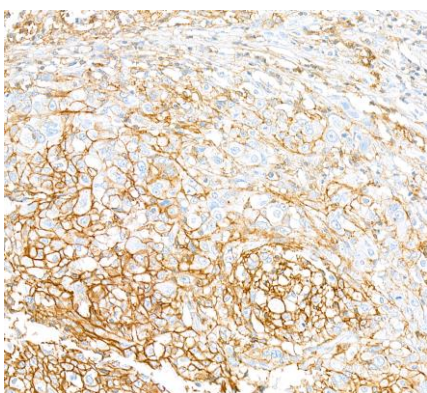
**ADDITIONAL INFO** <https://www.fortislife.com/p/A700-038-T>

Use the link above to view SDS, a current list of citations, and other product specific information.

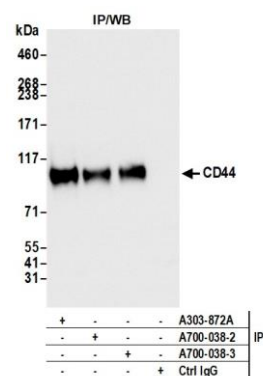
This document certifies that this product has met all of the quality control standards defined by Bethyl Laboratories, Inc.  
Michael Spencer, PhD Date: January 8, 2024



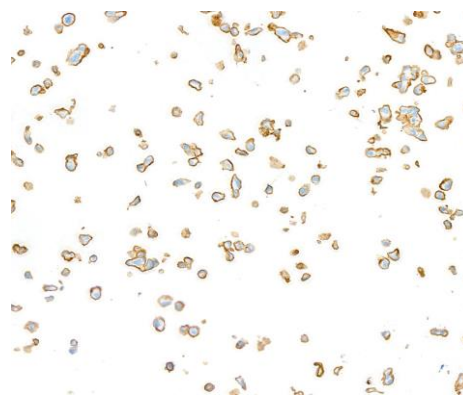
**Detection of human CD44 by western blot.** *Samples:* Whole cell lysate (10 µg) from HeLa, 786-O, HEK293T, A-549, and KG-1 cells prepared using NETN lysis buffer. *Antibody:* Rabbit anti-CD44 recombinant monoclonal antibody [BLR038F] (A700-038 lot 3) used at 1:1000. *Secondary:* HRP-conjugated goat anti-rabbit IgG (A120-101P). *Detection:* Chemiluminescence with an exposure time of 3 seconds. Lower Panel: Rabbit anti-COPB2 antibody (A304-523A).



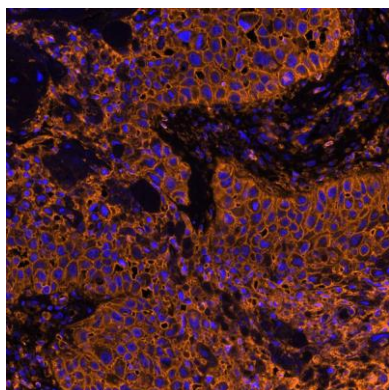
**Detection of human CD44 in FFPE breast carcinoma by IHC.** *Antibody:* Rabbit anti-CD44 recombinant monoclonal antibody [BLR038F] (A700-038). *Secondary:* HRP-conjugated goat anti-rabbit IgG (A120-501P). *Substrate:* DAB.



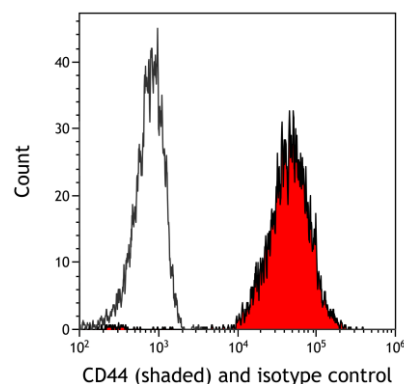
**Detection of human CD44 by western blot of immunoprecipitates.** *Samples:* Whole cell lysate (1.0 mg per IP reaction; 5% of IP loaded) from HeLa cells prepared using NETN lysis buffer. *Antibodies:* Rabbit anti-CD44 recombinant monoclonal antibody [BLR038F] (A700-038 lot 3) used for IP at 20 µl/mg lysate. CD44 was also immunoprecipitated by a previous lot of this antibody (A700-038 lot 2) and a second antibody against a different epitope of CD44 (A303-872A). For blotting immunoprecipitated CD44, A700-038 was used at 1:1000. *Detection:* Chemiluminescence with an exposure time of 1 second.



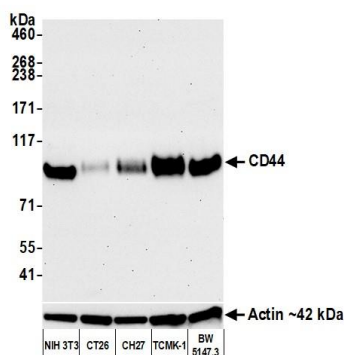
**Detection of human CD44 in FFPE 786-O cells by ICC.** *Antibody:* Rabbit anti-CD44 recombinant monoclonal antibody [BLR038F] (A700-038). *Secondary:* HRP-conjugated goat anti-rabbit IgG (A120-501P). *Substrate:* DAB.



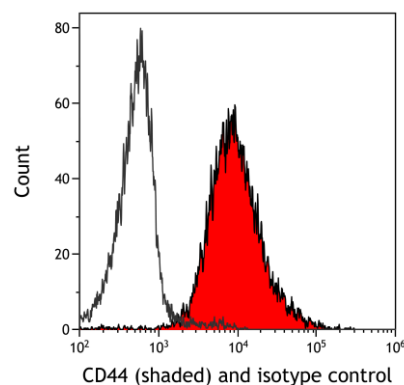
**Detection of human CD44 in FFPE head and neck squamous cell carcinoma by IHC-IF.** *Antibody:* Rabbit anti-CD44 recombinant monoclonal antibody [BLR038F] (A700-038 Lot 1). *Secondary:* HRP-conjugated goat anti-rabbit IgG (A120-501P). *Substrate:* Opal™. Counterstain: DAPI.



**Detection of human CD44 (shaded) in HeLa cells by flow cytometry.** *Antibody:* Rabbit anti-CD44 recombinant monoclonal antibody [BLR038F] (A700-038) or isotype control (unshaded). *Secondary:* DyLight® 650-conjugated goat anti-rabbit IgG (A120-101D5).



**Detection of mouse CD44 by western blot.** *Samples:* Whole cell lysate (10 µg) from NIH 3T3, CT26, CH27, TCMK-1, and BW5147.3 cells prepared using NETN lysis buffer. *Antibody:* Rabbit anti-CD44 recombinant monoclonal antibody [BLR038F] (A700-038 lot 3) used at 1:1000. *Secondary:* HRP-conjugated goat anti-rabbit IgG (A120-101P). *Detection:* Chemiluminescence with an exposure time of 30 seconds. Lower Panel: Rabbit anti-Actin recombinant monoclonal antibody [BLR057F] (A700-057).



**Detection of mouse CD44 (shaded) in EL4 cells by flow cytometry.** *Antibody:* Rabbit anti-CD44 recombinant monoclonal antibody [BLR038F] (A700-038) or isotype control (unshaded). *Secondary:* DyLight® 650-conjugated goat anti-rabbit IgG (A120-101D5).