

IRF1 Recombinant Monoclonal Antibody [BLR039F]

Rabbit Recombinant Monoclonal

Purified	Protein ID	NP_002189.1
Catalog No. A700-039-T	GeneID	3659
Lot No. A700-039-T-2		

APPLICATIONS	WB, IP, IHC, ICC, F
SPECIES REACTIVITY	Human
AMOUNT	10 µl (5+ tests)
CONCENTRATION	250 µg/ml
STORAGE/SHELF LIFE	2 – 8° C / 1 year from date of receipt
PHYSICAL STATE	Liquid
BUFFER	Borate Buffered Saline (BBS) pH 8.2 with 0.1% BSA and 0.09% Sodium Azide
ISOTYPE	IgG
CLONE #	BLR039F
ORIGIN	USA
PRODUCTION PROCEDURES	Recombinant antibody was purified from cell culture supernatant.

Immunogen was a peptide representing a region between residue 250 and 300 of human interferon regulatory factor 1 using the numbering given in entry NP_002189.1 (Gene ID 3659).

APPLICATIONS Centrifuge tube to remove product from lid. Optimal working dilutions should be determined experimentally by the investigator. Prepare working dilution immediately before use.

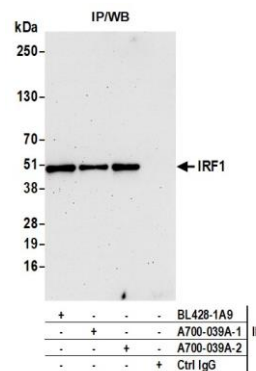
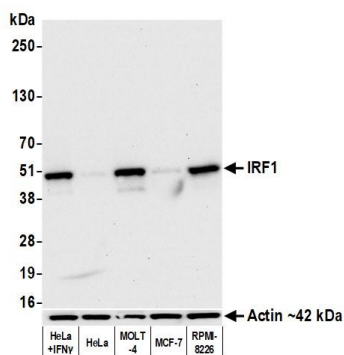
Western Blot	1:1,000
Immunoprecipitation	20 ul/1 mg lysate
Immunohistochemistry	1:100 to 1:500. Epitope retrieval with citrate buffer pH6.0 is recommended for FFPE tissue sections.
Immunocytochemistry	1:100 to 1:500. Epitope retrieval with citrate buffer pH6.0 is recommended for FFPE cell sections.
Flow Cytometry	Fixed in 4% formaldehyde and permeabilized with 90% methanol. 1 µl per 1 x 10 ⁶ cells.

IHC HUMAN CONTROLS Bladder Cell Carcinoma, Breast Carcinoma, Ovarian Carcinoma, Prostate Carcinoma, Tonsil, A2780 Cells, A-549 Cells, Jurkat Cells, KG-1 Cells, MJ Cells, MOLT-4 Cells, OVCAR-8 Cells

ADDITIONAL INFO <https://www.bethyl.com/product/A700-039-T>

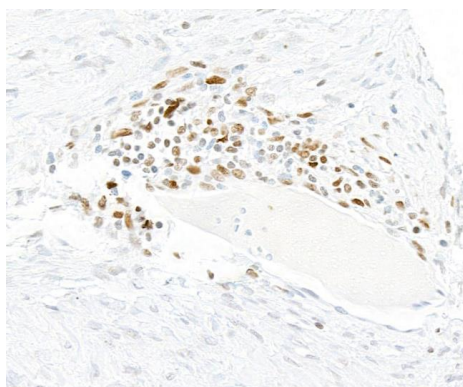
Use the link above to view SDS, a current list of citations, and other product specific information.

This document certifies that this product has met all of the quality control standards defined by Bethyl Laboratories, Inc.
Michael Spencer, PhD Date: October 13, 2021

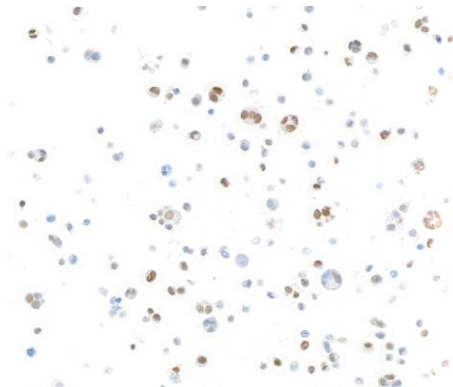


Detection of human IRF1 by western blot. *Samples:* Whole cell lysate (10 μ g) from HeLa treated with interferon gamma, HeLa, MOLT-4, MCF-7, and RPMI-8226 cells prepared using NETN lysis buffer. *Antibody:* Rabbit anti-IRF1 recombinant monoclonal antibody [BL-418-3E8] (A700-039A lot 2) used at 1:1000. *Secondary:* HRP-conjugated goat anti-rabbit IgG (A120-101P). Chemiluminescence with an exposure time of 10 seconds. Lower Panel: Rabbit anti-Actin recombinant monoclonal antibody [BLR057F] (A700-057).

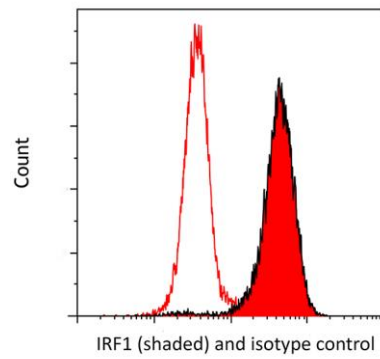
Detection of human IRF1 by western blot of immunoprecipitates. *Samples:* Whole cell lysate (1.0 mg per IP reaction; 20% of IP loaded) from Jurkat cells prepared using NETN lysis buffer. *Antibodies:* Rabbit anti-IRF1 recombinant monoclonal antibody [BL-418-3E8] (A700-039A lot 2) used for IP at 20 μ l/mg lysate. IRF1 was also immunoprecipitated by a previous lot of this antibody (A700-039A lot 1) and a second antibody against a different epitope of IRF1 (BL428-1A9). For blotting immunoprecipitated IRF1, A700-039A was used at 1:1000. Chemiluminescence with an exposure time of 75 seconds.



Detection of human IRF1 by immunohistochemistry. *Sample:* FFPE section of ovarian carcinoma. *Antibody:* Rabbit anti-IRF1 recombinant monoclonal antibody (A700-039-T-2). *Secondary:* HRP-conjugated goat anti-rabbit IgG (A120-501P).



Detection of human IRF1 by immunocytochemistry. *Sample:* FFPE section of MJ cells. *Antibody:* Rabbit anti-IRF1 recombinant monoclonal antibody (A700-039-T-2). *Secondary:* HRP-conjugated goat anti-rabbit IgG (A120-501P).



Detection of human IRF1 (shaded) in MOLT4 cells by flow cytometry. *Antibody:* Rabbit anti-IRF1 recombinant monoclonal [BLR039F] (A700-039-T lot 1) or isotype control (unshaded). *Secondary:* DyLight® 650-conjugated goat anti-rabbit IgG (A120-201D5).