

IDO1 Recombinant Monoclonal Antibody [BLR040F]

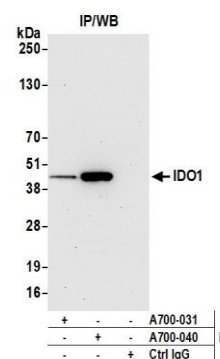
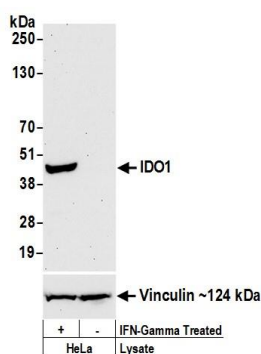
Rabbit Recombinant Monoclonal

Purified Protein ID NP_002155.1
Catalog No. A700-040-T GeneID 3620
Lot No. A700-040-T-1



APPLICATIONS	WB, IP
SPECIES REACTIVITY	Human
AMOUNT	20 µl (2 blots)
CONCENTRATION	400 µg/ml
STORAGE/SHELF LIFE	2 – 8° C / 1 year from date of receipt
PHYSICAL STATE	Liquid
BUFFER	Borate Buffered Saline (BBS) pH 8.2 with 0.1% BSA and 0.09% Sodium Azide
ISOTYPE	IgG
CLONE #	BLR040F
ORIGIN	USA
PRODUCTION PROCEDURES	Recombinant antibody was purified from cell culture supernatant. Immunogen was a recombinant protein representing human Indoleamine 2,3-dioxygenase 1 (IDO1, residues 1–403, NP_002155.1).
APPLICATIONS	Centrifuge tube to remove product from lid. Optimal working dilutions should be determined experimentally by the investigator. Prepare working dilution immediately before use. Western Blot 1:1000 Immunoprecipitation 15 ul/1mg lysate
ADDITIONAL INFO	https://www.bethyl.com/product/A700-040-T Use the link above to view SDS, a current list of citations, and other product specific information.

This document certifies that this product has met all of the quality control standards defined by Bethyl Laboratories, Inc.
Eric McIntush, PhD | Chief Scientific Officer Date: June 21, 2019



Detection of human IDO1 by western blot. Samples: Whole cell lysate (50 µg) from HeLa cells treated with IFN-gamma (+) or mock treated (-). **Antibody:** Rabbit anti-IDO1 recombinant monoclonal antibody [BLR040F] (A700-040-T lot 1) used at 1:1000. **Secondary:** HRP-conjugated goat anti-rabbit IgG (A120-101P). Chemiluminescence with an exposure time of 30 seconds. Lower Panel: Rabbit anti-Vinculin (A302-535A).

Detection of human IDO1 by western blot of immunoprecipitates. Samples: Whole cell lysate (1.0 mg per IP reaction; 20% of IP loaded) from HeLa cells treated with IFN-gamma. **Antibodies:** Rabbit anti-IDO1 recombinant monoclonal antibody [BLR040F] (A700-040-T lot 1) used for IP at 15 µl per reaction. IDO1 was also immunoprecipitated by rabbit anti-IDO1 antibody (A700-031). For blotting immunoprecipitated IDO1, A700-040-T was used at 1:1000. Chemiluminescence with an exposure time of 30 seconds.