

CTCF Recombinant Monoclonal Antibody [BLR041F]

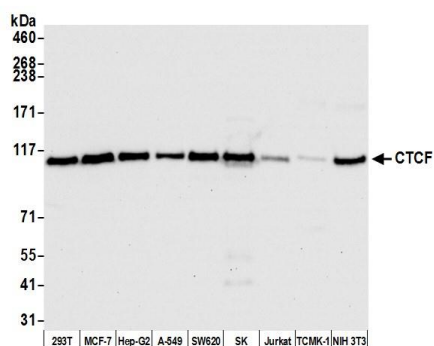
Rabbit Recombinant Monoclonal

Purified Protein ID NP_006556.1
Catalog No. A700-041 GeneID 10664
Lot No. A700-041-1



APPLICATIONS	WB, IP, IHC, ICC
SPECIES REACTIVITY	Human, Mouse
AMOUNT	100 µl (10 blots)
CONCENTRATION	100 µg/ml
STORAGE/SHELF LIFE	2 – 8° C / 1 year from date of receipt
PHYSICAL STATE	Liquid
BUFFER	Borate Buffered Saline (BBS) pH 8.2 with 0.1% BSA and 0.09% Sodium Azide
ISOTYPE	IgG
CLONE #	BLR041F
ORIGIN	USA
PRODUCTION PROCEDURES	Recombinant antibody was purified from cell culture supernatant. Immunogen was a peptide representing a region between residue 650 to 700 of human CCCTC-binding factor using the numbering given in entry NP_006556.1 (Gene ID 10664).
APPLICATIONS	Centrifuge tube to remove product from lid. Optimal working dilutions should be determined experimentally by the investigator. Prepare working dilution immediately before use. Western Blot 1:1000 Immunoprecipitation 20 ul/1 mg lysate Immunohistochemistry 1:100 to 1:500. Epitope retrieval with citrate buffer pH6.0 is recommended for FFPE tissue sections. Immunocytochemistry 1:100 to 1:500. Epitope retrieval with citrate buffer pH6.0 is recommended for FFPE cell sections.
IHC HUMAN CONTROLS	Breast Carcinoma, Colon Carcinoma, Lung Carcinoma, Ovarian Carcinoma, Prostate Carcinoma, Renal Cell Carcinoma, Tonsil, HCT 116 Cells, MCF-7 Cells
IHC MOUSE CONTROLS	Renal Cell Carcinoma
ADDITIONAL INFO	https://www.bethyl.com/product/A700-041 Use the link above to view SDS, a current list of citations, and other product specific information.

This document certifies that this product has met all of the quality control standards defined by Bethyl Laboratories, Inc.
Eric McIntush, PhD | Chief Scientific Officer Date: October 14, 2019

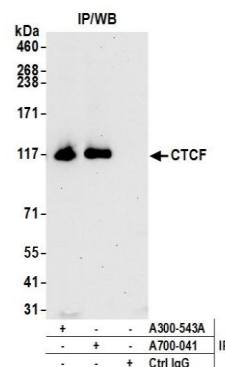


Detection of human and mouse CTCF by western blot.

Samples: Whole cell lysate (50 µg) from HEK293T, MCF-7, Hep-G2, A-549, SW620, SK-MEL-28 (SK), Jurkat, TCMK-1, and NIH 3T3 cells prepared using NETN lysis buffer.

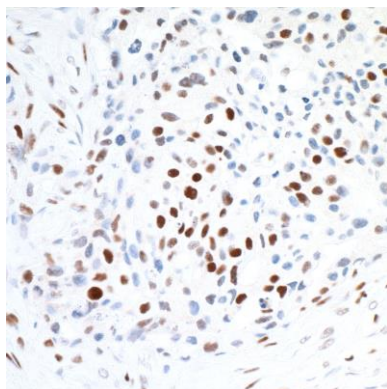
Antibody: Rabbit anti-CTCF recombinant monoclonal antibody [BLR041F] (A700-041 lot 1) used at 1:1000.

Secondary: HRP-conjugated goat anti-rabbit IgG (A120-101P). Chemiluminescence with an exposure time of 10 seconds.



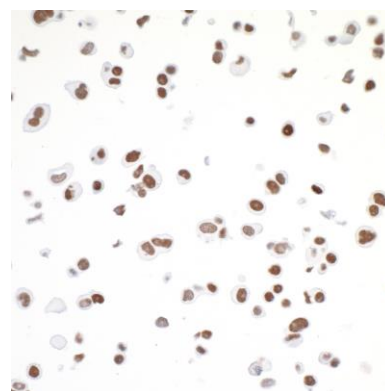
Detection of human CTCF by western blot of immunoprecipitates.

Samples: Whole cell lysate (1.0 mg per IP reaction; 20% of IP loaded) from HEK293T cells prepared using NETN lysis buffer. *Antibodies:* Rabbit anti-CTCF recombinant monoclonal antibody [BLR041F] (A700-041 lot 1) used for IP at 20 µl/mg lysate. CTCF was also immunoprecipitated by rabbit anti-CTCF antibody A300-543A. For blotting immunoprecipitated CTCF, A700-041 was used at 1:1000. Chemiluminescence with an exposure time of 30 seconds.



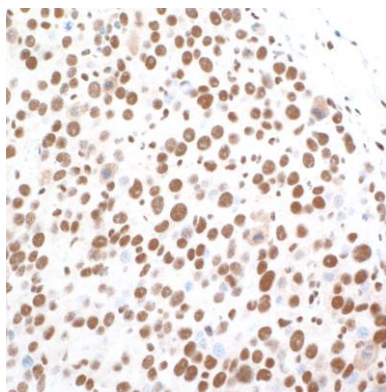
Detection of human CTCF by immunohistochemistry.

Sample: FFPE section of lung carcinoma. *Antibody:* Rabbit anti-CTCF recombinant monoclonal antibody [BLR041F] (A700-041 lot 1) used at 1:100. *Secondary:* HRP-conjugated goat anti-rabbit IgG (A120-501P). *Substrate:* DAB.



Detection of human CTCF by immunocytochemistry.

Sample: FFPE section of MCF-7 cells. *Antibody:* Rabbit anti-CTCF recombinant monoclonal antibody [BLR041F] (A700-041 lot 1) used at 1:100. *Secondary:* HRP-conjugated goat anti-rabbit IgG (A120-501P). *Substrate:* DAB.

**Detection of mouse CTCF by immunohistochemistry.**

Sample: FFPE section of mouse renal cell carcinoma.

Antibody: Rabbit anti-CTCF recombinant monoclonal antibody [BLR041F] (A700-041 lot 1) used at 1:100.

Secondary: HRP-conjugated goat anti-rabbit IgG (A120-501P). *Substrate:* DAB.