

OX40/CD134 Recombinant Monoclonal Antibody [BLR042F]

Rabbit Recombinant Monoclonal

Purified Protein ID NP_003318.1
Catalog No. A700-042-T GeneID 7293
Lot No. A700-042-T-1



APPLICATIONS WB, IP, IHC, ICC, IHC-IF
SPECIES REACTIVITY Human
AMOUNT 10 µl (5+ tests)
CONCENTRATION 50 µg/ml
STORAGE/SHELF LIFE 2 - 8° C / 1 year from date of receipt
PHYSICAL STATE Liquid
BUFFER Borate Buffered Saline (BBS) pH 8.2 with 0.1% BSA and 0.09% Sodium Azide
ISOTYPE IgG
CLONE # BLR042F
ORIGIN USA
PRODUCTION PROCEDURES Recombinant antibody was purified from cell culture supernatant.

Immunogen was a recombinant protein representing the extracellular domain of human OX40/CD134 (residues 29-216, NP_003318.1).

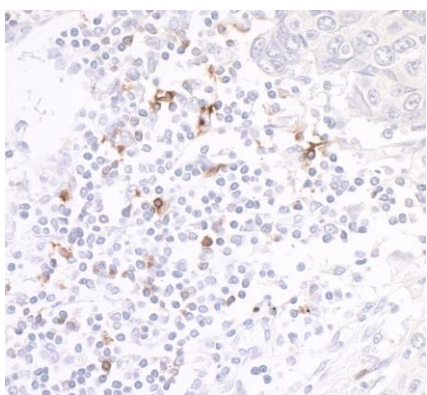
APPLICATIONS Centrifuge tube to remove product from lid. Optimal working dilutions should be determined experimentally by the investigator. Prepare working dilution immediately before use.

Western Blot	1:1000
Immunoprecipitation	20 ul/1mg lysate
Immunohistochemistry	1:100 to 1:500. Epitope retrieval with citrate buffer pH6.0 is recommended for FFPE tissue sections.
Immunocytochemistry	1:100 to 1:500. Epitope retrieval with citrate buffer pH6.0 is recommended for FFPE cell sections.
Immunofluorescence (IHC)	1:100 to 1:500. Epitope retrieval with citrate buffer pH6.0 is recommended for FFPE tissue sections.

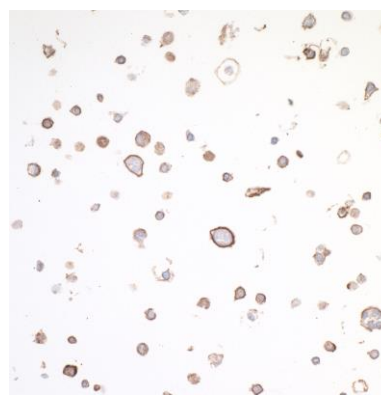
IHC HUMAN CONTROLS Breast Carcinoma, Lung Carcinoma, Prostate Carcinoma, Tonsil, MJ Cells

ADDITIONAL INFO <https://www.bethyl.com/product/A700-042-T>
Use the link above to view SDS, a current list of citations, and other product specific information.

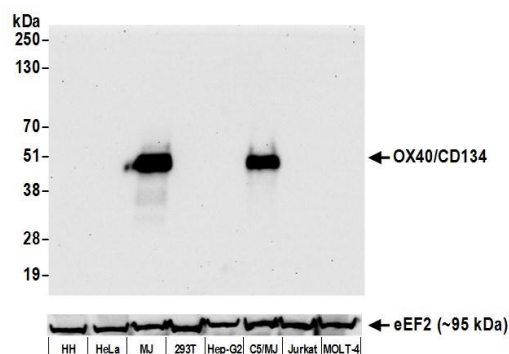
This document certifies that this product has met all of the quality control standards defined by Bethyl Laboratories, Inc.
Eric McIntush, PhD | Chief Scientific Officer Date: June 21, 2019



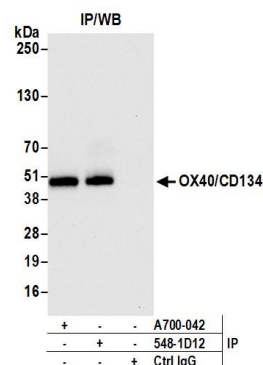
Detection of human OX40/CD134 by immunohistochemistry. *Sample:* FFPE section of lung carcinoma. *Antibody:* Rabbit anti-OX40/CD134 recombinant monoclonal antibody [BLR042F] (A700-042-T lot 1) used at 1:250. *Secondary:* HRP-conjugated goat anti-rabbit IgG (A120-501P). *Substrate:* DAB.



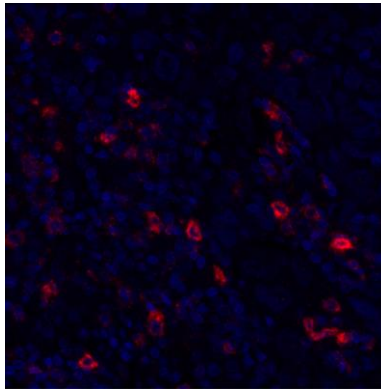
Detection of human OX40/CD134 by immunocytochemistry. *Sample:* FFPE section of MJ cells. *Antibody:* Rabbit anti-OX40/CD134 recombinant monoclonal antibody [BLR042F] (A700-042-T lot 1) used at 1:250. *Secondary:* HRP-conjugated goat anti-rabbit IgG (A120-501P). *Substrate:* DAB.



Detection of human OX40/CD134 by western blot. *Samples:* Whole cell lysate (50 µg) from HH, HeLa, MJ, HEK293T, Hep-G2, C5/MJ, Jurkat, and MOLT-4 cells prepared using NETN lysis buffer. *Antibody:* Rabbit anti-OX40/CD134 recombinant monoclonal antibody [BLR042F] (A700-042-T lot 1) used at 1:1000. *Secondary:* HRP-conjugated goat anti-rabbit IgG (A120-101P). Chemiluminescence with an exposure time of 30 seconds. Lower panel: Rabbit anti-eEF2 (A301-688A).



Detection of human OX40/CD134 by western blot of immunoprecipitates. *Samples:* Whole cell lysate (1.0 mg per IP reaction; 20% of IP loaded) from MJ cells prepared using NETN lysis buffer. *Antibodies:* Rabbit anti-OX40/CD134 recombinant monoclonal antibody [BLR042F] (A700-042-T lot 1) used for IP at 20 µl per reaction. OX40/CD134 was also immunoprecipitated by rabbit anti-OX40/CD134 recombinant monoclonal antibody [548-1D12]. For blotting immunoprecipitated OX40/CD134, A700-042-T was used at 1:1000. Chemiluminescence with an exposure time of 30 seconds.



Detection of human OX40/CD134 (red) by immunohistochemistry. *Sample:* FFPE section of human breast carcinoma. *Antibody:* Rabbit anti-OX40/CD134 recombinant monoclonal antibody [BLR042F] (A700-042-T lot 1) used at 1:250. *Secondary:* HRP-conjugated goat anti-rabbit IgG (A120-501P). *Substrate:* Opal™. *Counterstain:* DAPI (blue).