

B7-H4 Recombinant Monoclonal Antibody [BLR043F]

Rabbit Recombinant Monoclonal

Purified		Protein ID	NP_078902.2
Catalog No.	A700-043-T	GeneID	79679
Lot No.	A700-043-T-1		



APPLICATIONS	WB, IP, IHC, ICC, IHC-IF
SPECIES REACTIVITY	Human
AMOUNT	10 µl (5+ tests)
CONCENTRATION	50 µg/ml
STORAGE/SHELF LIFE	2 – 8° C / 1 year from date of receipt
PHYSICAL STATE	Liquid
BUFFER	Borate Buffered Saline (BBS) pH 8.2 with 0.1% BSA and 0.09% Sodium Azide
ISOTYPE	IgG
CLONE #	BLR043F
ORIGIN	USA
PRODUCTION PROCEDURES	Recombinant antibody was purified from cell culture supernatant. Immunogen was a recombinant protein representing the extracellular domain of human B7-H4 (residues 30–282, NP_078902.2).

APPLICATIONS Centrifuge tube to remove product from lid. Optimal working dilutions should be determined experimentally by the investigator. Prepare working dilution immediately before use.

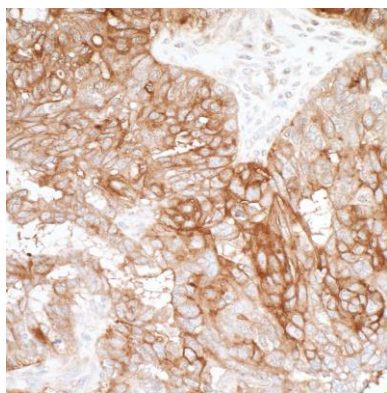
Western Blot	1:1000
Immunoprecipitation	20 ul/1mg lysate
Immunohistochemistry	1:100 to 1:500. Epitope retrieval with citrate buffer pH6.0 is recommended for FFPE tissue sections.
Immunocytochemistry	1:100 to 1:500. Epitope retrieval with citrate buffer pH6.0 is recommended for FFPE cell sections.
Immunofluorescence (IHC)	1:100 to 1:500. Epitope retrieval with citrate buffer pH6.0 is recommended for FFPE tissue sections.

IHC HUMAN CONTROLS Bladder Cell Carcinoma, Lung Carcinoma, Ovarian Carcinoma, OVCAR-3 Cells, OVCAR-4 Cells, RT-4 Cells, SK-MEL-28 Cells

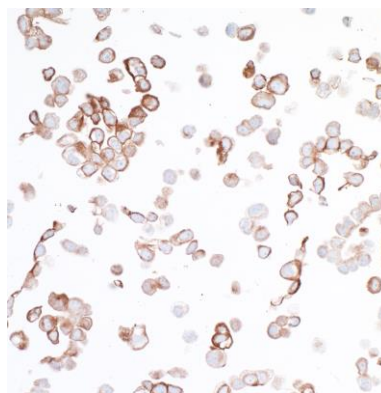
ADDITIONAL INFO <https://www.bethyl.com/product/A700-043-T>

Use the link above to view SDS, a current list of citations, and other product specific information.

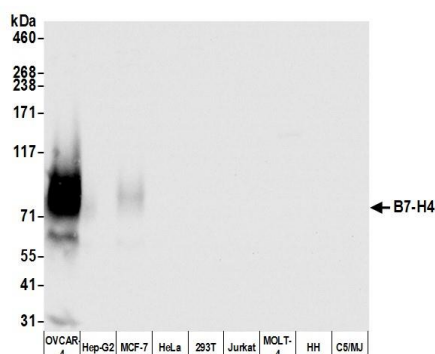
This document certifies that this product has met all of the quality control standards defined by Bethyl Laboratories, Inc.
Eric McIntush, PhD | Chief Scientific Officer Date: June 21, 2019

**Detection of human B7-H4 by immunohistochemistry.**

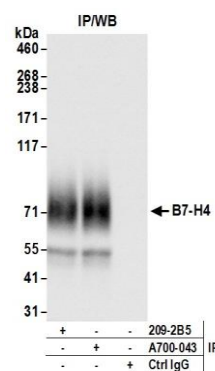
Sample: FFPE section of ovarian carcinoma. *Antibody:* Rabbit anti-B7-H4 recombinant monoclonal antibody [BLR043F] (A700-043-T lot 1) used at 1:100. *Secondary:* HRP-conjugated goat anti-rabbit IgG (A120-501P). *Substrate:* DAB.

**Detection of human B7-H4 by immunocytochemistry.**

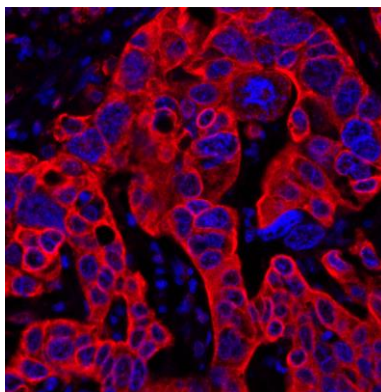
Sample: FFPE section of OVCAR-3 cells. *Antibody:* Rabbit anti-B7-H4 recombinant monoclonal antibody [BLR043F] (A700-043-T lot 1) used at 1:100. *Secondary:* HRP-conjugated goat anti-rabbit IgG (A120-501P). *Substrate:* DAB.



Detection of human B7-H4 by western blot. *Samples:* Whole cell lysate (50 µg) from OVCAR-4, Hep-G2, MCF-7, HeLa, HEK293T, Jurkat, MOLT-4, HH, and C5/MJ cells prepared using NETN lysis buffer. *Antibody:* Rabbit anti-B7-H4 recombinant monoclonal antibody [BLR043F] (A700-043-T lot 1) used at 1:1000. *Secondary:* HRP-conjugated goat anti-rabbit IgG (A120-101P). Chemiluminescence with an exposure time of 3 seconds.



Detection of human B7-H4 by western blot of immunoprecipitates. *Samples:* Whole cell lysate (1.0 mg per IP reaction; 20% of IP loaded) from OVCAR-4 cells prepared using NETN lysis buffer. *Antibodies:* Rabbit anti-B7-H4 recombinant monoclonal antibody [BLR043F] (A700-043-T lot 1) used for IP at 20 µl per reaction. B7-H4 was also immunoprecipitated by rabbit anti-B7-H4 recombinant monoclonal antibody [209-2B5]. For blotting immunoprecipitated B7-H4, A700-043-T was used at 1:1000. Chemiluminescence with an exposure time of 3 seconds.



Detection of human B7-H4 (red) by immunohistochemistry. *Sample:* FFPE section of human lung carcinoma. *Antibody:* Rabbit anti-B7-H4 recombinant monoclonal antibody [BLR043F] (A700-043-T lot 1) used at 1:250. *Secondary:* HRP-conjugated goat anti-rabbit IgG (A120-501P). *Substrate:* Opal™. *Counterstain:* DAPI (blue).