

CD8 alpha Recombinant Monoclonal Antibody [BLR044F]

Rabbit Recombinant Monoclonal

Purified Protein ID NP_001759.3
Catalog No. A700-044-T GeneID 925
Lot No. A700-044-T-1



APPLICATIONS WB, IHC, IHC-IF, mIF
SPECIES REACTIVITY Human
AMOUNT 10 µl (5+ tests)
CONCENTRATION 250 µg/ml
STORAGE/SHELF LIFE 2 - 8° C / 1 year from date of receipt
PHYSICAL STATE Liquid
BUFFER Borate Buffered Saline (BBS) pH 8.2 with 0.1% BSA and 0.09% Sodium Azide
ISOTYPE IgG
CLONE # BLR044F
ORIGIN USA
PRODUCTION PROCEDURES Recombinant antibody was purified from cell culture supernatant.

Immunogen was a peptide representing a region between residue 185 and the C-terminus (residue 235) of human T-cell surface glycoprotein CD8 alpha chain using the numbering given in entry NP_001759.3 (Gene ID 925)

APPLICATIONS Centrifuge tube to remove product from lid. Optimal working dilutions should be determined experimentally by the investigator. Prepare working dilution immediately before use.

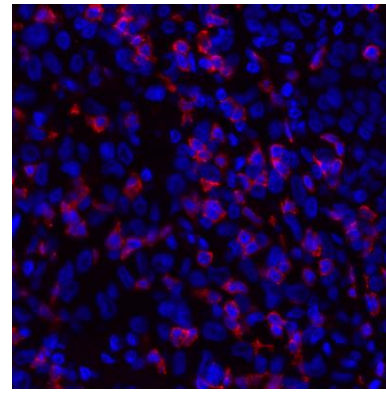
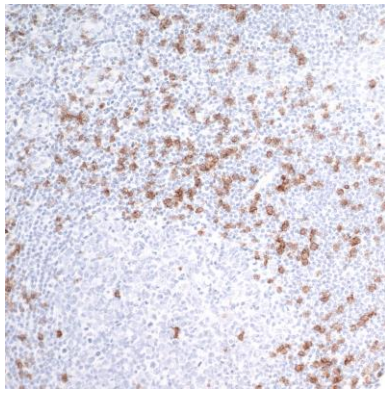
Western Blot 1:1000
Immunohistochemistry 1:100 to 1:500. Epitope retrieval with citrate buffer pH6.0 is recommended for FFPE tissue sections.
Immunofluorescence (IHC) 1:100 to 1:500. Epitope retrieval with citrate buffer pH6.0 is recommended for FFPE cell sections.
Multiplex Immunofluorescence 1:250

IHC HUMAN CONTROLS Melanoma, Tonsil

ADDITIONAL INFO <https://www.bethyl.com/product/A700-044-T>

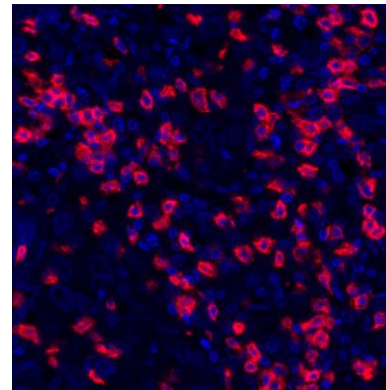
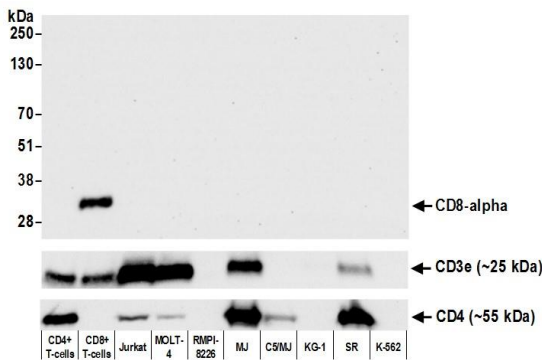
Use the link above to view SDS, a current list of citations, and other product specific information.

This document certifies that this product has met all of the quality control standards defined by Bethyl Laboratories, Inc.
Eric McIntush, PhD | Chief Scientific Officer Date: June 25, 2019



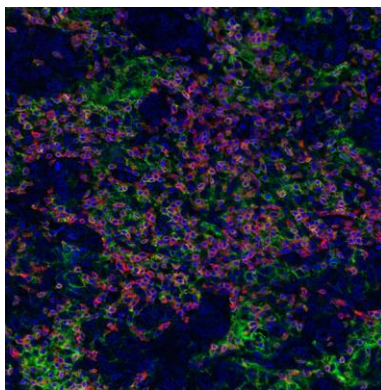
Detection of human CD8 alpha by immunohistochemistry. *Sample:* FFPE section of human tonsil. *Antibody:* Rabbit anti-CD8 alpha recombinant monoclonal antibody [BLR044F] (A700-044-T lot 1) used at 1:250. *Secondary:* HRP-conjugated goat anti-rabbit IgG (A120-501P). *Substrate:* DAB.

Detection of human CD8 alpha by immunohistochemistry. *Sample:* FFPE section of human melanoma. *Antibody:* Rabbit anti-CD8 alpha recombinant monoclonal antibody [BLR044F] (A700-044-T lot 1) used at 1:100. *Secondary:* DyLight® 594-conjugated goat anti-rabbit IgG (A120-101D4).



Detection of human CD8 alpha by western blot. *Samples:* Whole cell lysate (50 µg) from CD4+ T-cells, CD8+ T-cells, Jurkat, MOLT-4, RPMI-8226, MJ, C5/MJ, KG-1, SR, and K-562 cells prepared using NETN lysis buffer. *Antibody:* Rabbit anti-CD8 alpha recombinant monoclonal antibody [BLR044F] (A700-044-T lot 1) used at 1:1000. *Secondary:* HRP-conjugated goat anti-rabbit IgG (A120-101P). Chemiluminescence with an exposure time of 30 seconds. Lower panel: Recombinant monoclonal antibodies to CD3e (A700-016) and CD4 (A700-015).

Detection of human CD8 alpha (red) by immunohistochemistry. *Sample:* FFPE section of human breast carcinoma. *Antibody:* Rabbit anti-CD8 alpha recombinant monoclonal antibody [BLR044F] (A700-044-T lot 1) used at 1:250. *Secondary:* HRP-conjugated goat anti-rabbit IgG (A120-501P). *Substrate:* Opal™. *Counterstain:* DAPI (blue).



Detection of human CD3E (orange), CD8 alpha (red), and PD-L1 (green) in FFPE breast carcinoma by IHC-IF. Rabbit anti-CD3E recombinant monoclonal [BL-298-5D12] (A700-016), rabbit anti-CD8 alpha recombinant monoclonal [BLR044F] (A700-044), rabbit anti-PD-L1 recombinant monoclonal [BLR020E] (A700-020). Secondary: HRP-conjugated goat anti-rabbit IgG (A120-501P). Substrate: Opal™ 520, 620, and 690. Counterstain: DAPI (blue).