

c-Maf Recombinant Monoclonal Antibody [BLR045F]

Rabbit Recombinant Monoclonal

Purified Protein ID NP_005351.2
Catalog No. A700-045-T GeneID 4094
Lot No. A700-045-T-3



APPLICATIONS WB, IP, IHC, ICC
SPECIES REACTIVITY Human, Mouse
AMOUNT 10 µl (5+ tests)
CONCENTRATION 1000 µg/ml
STORAGE/SHELF LIFE 2 – 8° C / 1 year from date of receipt
PHYSICAL STATE Liquid
BUFFER Borate Buffered Saline (BBS) pH 8.2 with 0.09% Sodium Azide, BSA Free
ISOTYPE IgG
CLONE # BLR045F
ORIGIN USA
PRODUCTION PROCEDURES Recombinant antibody was purified from cell culture supernatant.

Immunogen was a peptide representing a region between residues 125 and 175 of human MAF bZIP transcription factor (c-Maf) using the numbering given in entry NP_005351.2 (Gene ID 4094).

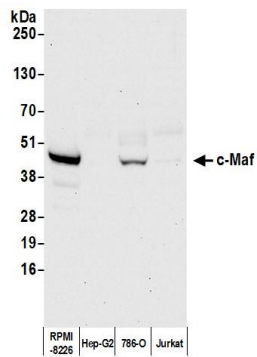
APPLICATIONS Centrifuge tube to remove product from lid. Optimal working dilutions should be determined experimentally by the investigator. Prepare working dilution immediately before use.

Western Blot 1:1000
Immunoprecipitation 6 µl/1 mg lysate
Immunohistochemistry 1:100 to 1:500. Epitope retrieval with citrate buffer pH6.0 is recommended for FFPE tissue sections.
Immunocytochemistry 1:100 to 1:500. Epitope retrieval with citrate buffer pH6.0 is recommended for FFPE cell sections.

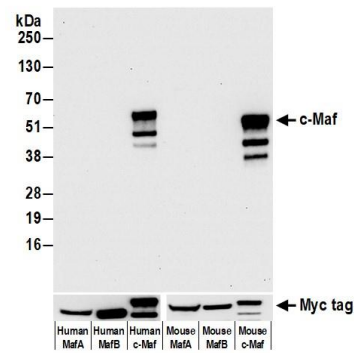
IHC HUMAN CONTROLS Appendix, Tonsil, 786-O Cells, HEK293T Cells, Ramos Cells, RPMI-8226 Cells

ADDITIONAL INFO <https://www.bethyl.com/product/A700-045-T>
Use the link above to view SDS, a current list of citations, and other product specific information.

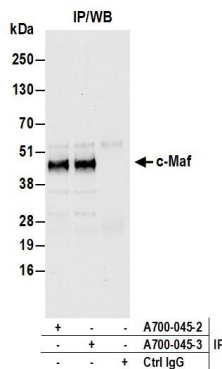
This document certifies that this product has met all of the quality control standards defined by Bethyl Laboratories, Inc.
Brian McWilliams, PhD Date: December 29, 2020



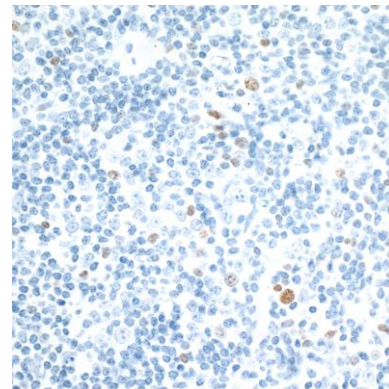
Detection of human c-Maf by western blot. *Samples:* Whole cell lysate (50 µg) from RPMI-8226, Hep-G2, 786-O, and Jurkat cells prepared using NETN lysis buffer. *Antibody:* Rabbit anti-c-Maf recombinant monoclonal antibody [BL-664A-5F2] (A700-045-T lot 3) used at 1:1000. *Secondary:* HRP-conjugated goat anti-rabbit IgG (A120-101P). Chemiluminescence with an exposure time of 30 seconds.



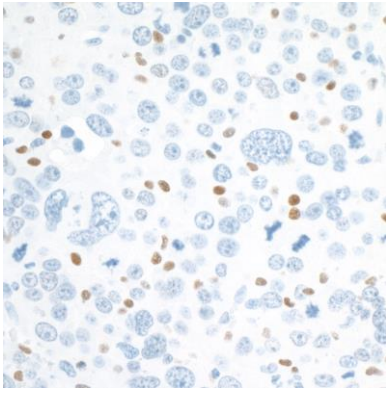
Detection of human c-Maf by western blot of HEK293T transfected with myc tagged human or mouse MafA, MafB, or c-Maf. *Antibody:* Rabbit anti-c-Maf recombinant monoclonal antibody [BLR045R] (A700-045-T lot 3) used at 1:1000. *Secondary:* HRP-conjugated goat anti-rabbit IgG (A120-101P). Chemiluminescence with an exposure time of 30 seconds. Lower Panel: Rabbit anti-Myc Tag recombinant monoclonal antibody [BLRE01G](A191-101A).



Detection of human c-Maf by western blot of immunoprecipitates. *Samples:* Whole cell lysate (1.0 mg per IP reaction; 20% of IP loaded) from 293T cells prepared using NETN lysis buffer. *Antibodies:* Rabbit anti-c-Maf recombinant monoclonal antibody [BL-664A-5F2] (A700-045-T lot 3) used for IP at 6 µl per reaction. c-Maf was also immunoprecipitated by a previous lot of this antibody (A700-045 lot 2). For blotting immunoprecipitated c-Maf, A700-045-T was used at 1:1000. Chemiluminescence with an exposure time of 10 seconds.



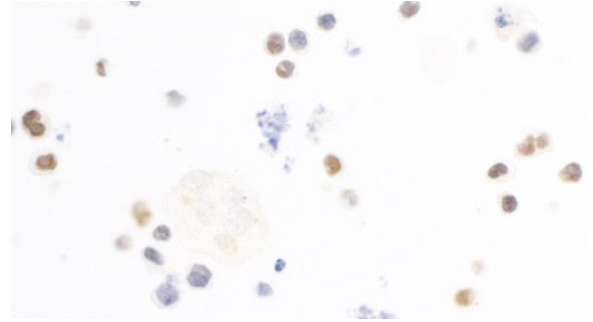
Detection of human c-MAF by immunohistochemistry. *Sample:* FFPE section of human tonsil. *Antibody:* Rabbit anti-c-MAF recombinant monoclonal antibody [BLR045F] (A700-045-T lot 3) used at 1:125. *Secondary:* HRP-conjugated goat anti-rabbit IgG (A120-501P). *Substrate:* DAB.

**Detection of mouse c-MAF by immunohistochemistry.**

Sample: FFPE section of mouse renal cell carcinoma.

Antibody: Rabbit anti-c-MAF recombinant monoclonal antibody [BLR045F] (A700-045-T lot 3) used at 1:125.

Secondary: HRP-conjugated goat anti-rabbit IgG (A120-501P). *Substrate:* DAB.

**Detection of human c-MAF by immunocytochemistry.**

Sample: FFPE section of RPMI-8226 cells. *Antibody:* Rabbit anti-c-MAF recombinant monoclonal antibody [BLR045F]

(A700-045-T lot 3) used at 1:125. *Secondary:* HRP-conjugated goat anti-rabbit IgG (A120-501P). *Substrate:*

DAB.