

SIRP alpha Recombinant Monoclonal Antibody [BLR049F]

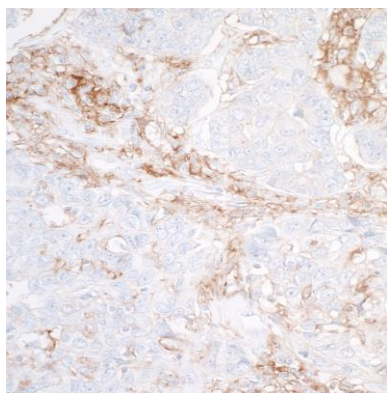
Rabbit Recombinant Monoclonal

Purified Protein ID NP_001035111.1
Catalog No. A700-049-T GeneID 140885
Lot No. A700-049-T-1



APPLICATIONS	WB, IP, IHC, ICC
SPECIES REACTIVITY	Human
AMOUNT	10 µl (5+ tests)
CONCENTRATION	250 µg/ml
STORAGE/SHELF LIFE	2 - 8° C / 1 year from date of receipt
PHYSICAL STATE	Liquid
BUFFER	Borate Buffered Saline (BBS) pH 8.2 with 0.1% BSA and 0.09% Sodium Azide
ISOTYPE	IgG
CLONE #	BLR049F
ORIGIN	USA
PRODUCTION PROCEDURES	Recombinant antibody was purified from cell culture supernatant. Immunogen was a recombinant protein representing the extracellular domain of human SIRP alpha (residues 31-368, NP_001035111.1).
APPLICATIONS	Centrifuge tube to remove product from lid. Optimal working dilutions should be determined experimentally by the investigator. Prepare working dilution immediately before use. Western Blot 1:1000 Immunoprecipitation 20 µl/1 mg lysate Immunohistochemistry 1:100 to 1:500. Epitope retrieval with citrate buffer pH6.0 is recommended for FFPE tissue sections. Immunocytochemistry 1:100 to 1:500. Epitope retrieval with citrate buffer pH6.0 is recommended for FFPE cell sections.
IHC HUMAN CONTROLS	Breast Carcinoma, Glioblastoma, Lung Carcinoma, Ovarian Carcinoma, Malme-3M cells, SK-MEL-28 Cells
ADDITIONAL INFO	https://www.bethyl.com/product/A700-049-T Use the link above to view SDS, a current list of citations, and other product specific information.

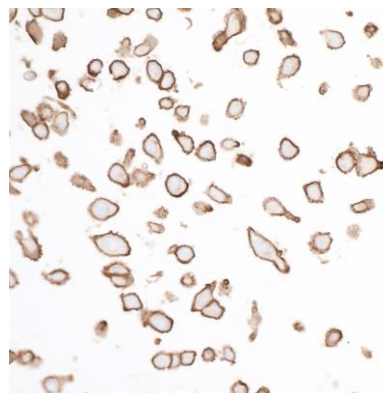
This document certifies that this product has met all of the quality control standards defined by Bethyl Laboratories, Inc.
Eric McIntush, PhD | Chief Scientific Officer Date: June 21, 2019

**Detection of human SIRP alpha by immunohistochemistry.**

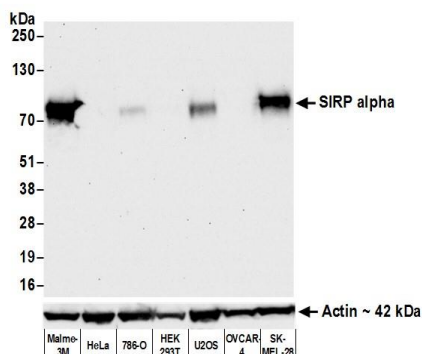
Sample: FFPE section of human breast carcinoma.

Antibody: Rabbit anti-SIRP alpha recombinant monoclonal antibody [BLR049F] (A700-049-T lot 1) used at 1:250.

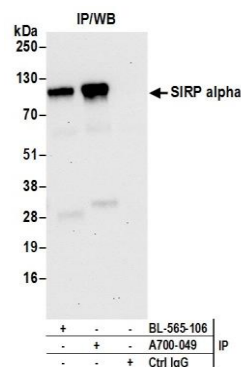
Secondary: HRP-conjugated goat anti-rabbit IgG (A120-501P). *Substrate:* DAB.

**Detection of human SIRP alpha by immunocytochemistry.**

Sample: FFPE section of Malme-3M cells. *Antibody:* Rabbit anti-SIRP alpha recombinant monoclonal antibody [BLR049F] (A700-049-T lot 1) used at 1:250. *Secondary:* HRP-conjugated goat anti-rabbit IgG (A120-501P). *Substrate:* DAB.



Detection of human SIRP alpha by western blot. *Samples:* Whole cell lysate (50 µg) from Malme-3M, HeLa, 786-O, HEK293T, U2OS, OVCAR-4, and SK-MEL-28 cells prepared using NETN lysis buffer. *Antibody:* Rabbit anti-SIRP alpha recombinant monoclonal antibody [BLR049F] (A700-049-T lot 1) used at 1:1000. *Secondary:* HRP-conjugated goat anti-rabbit IgG (A120-101P). Chemiluminescence with an exposure time of 30 seconds. Lower Panel: Rabbit anti-Actin (A700-057).



Detection of human SIRP alpha by western blot of immunoprecipitates. *Samples:* Whole cell lysate (1.0 mg per IP reaction; 20% of IP loaded) from SK-MEL-28 cells prepared using NETN lysis buffer. *Antibodies:* Rabbit anti-SIRP alpha recombinant monoclonal antibody [BLR049F] (A700-049-T lot 1) used for IP at 20 µl per reaction. SIRP alpha was also immunoprecipitated by rabbit anti-SIRP alpha recombinant monoclonal antibody [BL-565-1D6]. For blotting immunoprecipitated SIRP alpha, A700-049-T was used at 1:1000. Chemiluminescence with an exposure time of 30 seconds.