

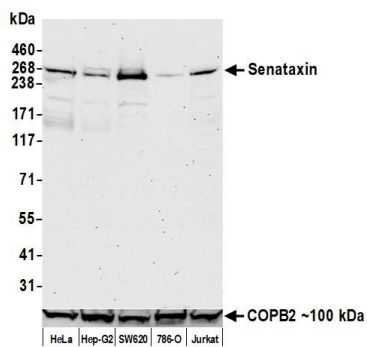
Senataxin Recombinant Monoclonal Antibody [BLR050F]

Rabbit Recombinant Monoclonal

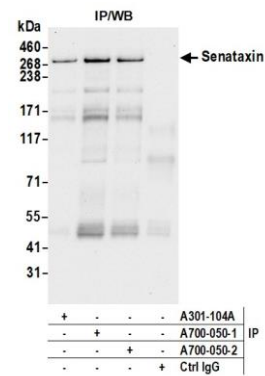
Purified Protein ID NP_055861.3
Catalog No. A700-050 GeneID 23064
Lot No. A700-050-2

APPLICATIONS	WB, IP, Flow Cyt
SPECIES REACTIVITY	Human
AMOUNT	100 µl (10 blots)
CONCENTRATION	1000 µg/ml
STORAGE/SHELF LIFE	2 – 8°C / 1 year from date of receipt
PHYSICAL STATE	Liquid
BUFFER	Borate Buffered Saline (BBS) pH 8.2 with 0.09% Sodium Azide, BSA Free
ISOTYPE	IgG
CLONE #	BLR050F
ORIGIN	USA
PRODUCTION PROCEDURES	Recombinant antibody was purified from cell culture supernatant. Immunogen was a peptide representing a region between residues 900 and 950 of human Senataxin using the numbering given in entry NP_055861.3 (Gene ID 23064).
APPLICATIONS	Centrifuge tube to remove product from lid. Optimal working dilutions should be determined experimentally by the investigator. Prepare working dilution immediately before use. Western Blot 1:1000 Immunoprecipitation 6 µl/1 mg lysate Flow Cytometry Fixed in 4% formaldehyde and permeabilized with 90% methanol. 1 µl per 1 x 10 ⁶ cells.
ADDITIONAL INFO	https://www.fortislife.com/p/A700-050 Use the link above to view SDS, a current list of citations, and other product specific information.

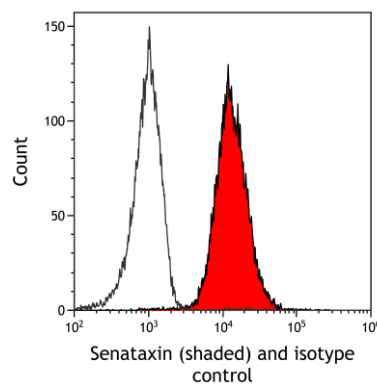
This document certifies that this product has met all of the quality control standards defined by Bethyl Laboratories, Inc.
Michael Spencer, PhD Date: July 29, 2022



Detection of human Senataxin by western blot. *Samples:* Whole cell lysate (50 μ g) from HeLa, Hep-G2, SW620, 786-O, and Jurkat cells prepared using NETN lysis buffer. *Antibody:* Rabbit anti-Senataxin recombinant monoclonal antibody [BLR050F] (A700-050 lot 2) used at 1:1000. *Secondary:* HRP-conjugated goat anti-rabbit IgG (A120-101P). Chemiluminescence with an exposure time of 75 seconds. Lower Panel: Rabbit anti-COPB2 antibody (A304-523A).



Detection of human Senataxin by western blot of immunoprecipitates. *Samples:* Whole cell lysate (1.0 mg per IP reaction; 20% of IP loaded) from HeLa cells prepared using NETN lysis buffer. *Antibodies:* Rabbit anti-Senataxin recombinant monoclonal antibody [BLR050F] (A700-050 lot 2) used for IP at 6 μ l/mg lysate. Senataxin was also immunoprecipitated by a previous lot of this antibody (A700-050 lot 1) and a second antibody against a different epitope of Senataxin (A301-104A). For blotting immunoprecipitated Senataxin, A700-050 was used at 1:1000. Chemiluminescence with an exposure time of 10 seconds.



Detection of human Senataxin (shaded) in Ramos cells by flow cytometry. *Antibody:* Rabbit anti-Senataxin recombinant monoclonal [BLR050F] (A700-050) or isotype control (unshaded). *Secondary:* DyLight[®] 488-conjugated goat anti-rabbit IgG (A120-101D2).