

# Senataxin Recombinant Monoclonal Antibody [BLR050F]

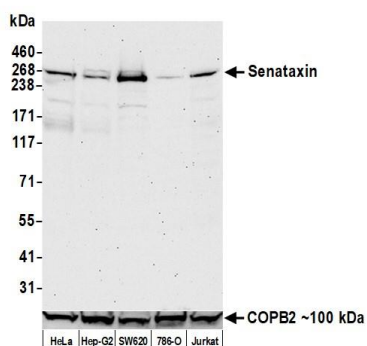
Rabbit Recombinant Monoclonal

Purified Protein ID NP\_055861.3  
Catalog No. A700-050-T GeneID 23064  
Lot No. A700-050-T-2

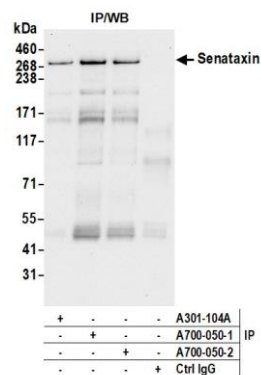
---

<b>APPLICATIONS</b>	WB, IP
<b>SPECIES REACTIVITY</b>	Human
<b>AMOUNT</b>	20 µl (2 blots)
<b>CONCENTRATION</b>	1000 µg/ml
<b>STORAGE/SHELF LIFE</b>	2 – 8°C / 1 year from date of receipt
<b>PHYSICAL STATE</b>	Liquid
<b>BUFFER</b>	Borate Buffered Saline (BBS) pH 8.2 with 0.09% Sodium Azide, BSA Free
<b>ISOTYPE</b>	IgG
<b>CLONE #</b>	BLR050F
<b>ORIGIN</b>	USA
<b>PRODUCTION PROCEDURES</b>	Recombinant antibody was purified from cell culture supernatant.  Immunogen was a peptide representing a region between residues 900 and 950 of human Senataxin using the numbering given in entry NP_055861.3 (Gene ID 23064).
<b>APPLICATIONS</b>	Centrifuge tube to remove product from lid. Optimal working dilutions should be determined experimentally by the investigator. Prepare working dilution immediately before use.  Western Blot 1:1000 Immunoprecipitation 6 µl/1 mg lysate
<b>ADDITIONAL INFO</b>	<a href="https://www.fortislife.com/p/A700-050-T">https://www.fortislife.com/p/A700-050-T</a> Use the link above to view SDS, a current list of citations, and other product specific information.

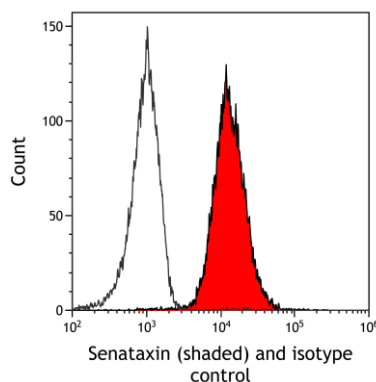
This document certifies that this product has met all of the quality control standards defined by Bethyl Laboratories, Inc.  
Michael Spencer, PhD Date: July 29, 2022



**Detection of human Senataxin by western blot.** *Samples:* Whole cell lysate (50  $\mu$ g) from HeLa, Hep-G2, SW620, 786-O, and Jurkat cells prepared using NETN lysis buffer. *Antibody:* Rabbit anti-Senataxin recombinant monoclonal antibody [BLR050F] (A700-050 lot 2) used at 1:1000. *Secondary:* HRP-conjugated goat anti-rabbit IgG (A120-101P). Chemiluminescence with an exposure time of 75 seconds. Lower Panel: Rabbit anti-COPB2 antibody (A304-523A).



**Detection of human Senataxin by western blot of immunoprecipitates.** *Samples:* Whole cell lysate (1.0 mg per IP reaction; 20% of IP loaded) from HeLa cells prepared using NETN lysis buffer. *Antibodies:* Rabbit anti-Senataxin recombinant monoclonal antibody [BLR050F] (A700-050 lot 2) used for IP at 6  $\mu$ l/mg lysate. Senataxin was also immunoprecipitated by a previous lot of this antibody (A700-050 lot 1) and a second antibody against a different epitope of Senataxin (A301-104A). For blotting immunoprecipitated Senataxin, A700-050 was used at 1:1000. Chemiluminescence with an exposure time of 10 seconds.



**Detection of human Senataxin (shaded) in Ramos cells by flow cytometry.** *Antibody:* Rabbit anti-Senataxin recombinant monoclonal [BLR050F] (A700-050) or isotype control (unshaded). *Secondary:* DyLight<sup>®</sup> 488-conjugated goat anti-rabbit IgG (A120-101D2).