

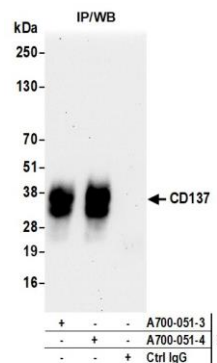
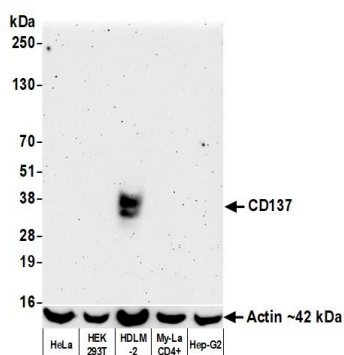
CD137 Recombinant Monoclonal Antibody [BLR051F]

Rabbit Recombinant Monoclonal

Purified		RefSeq ID	NP_001552.2
Catalog No.	A700-051-T	Uniprot ID	Q07011
Lot No.	A700-051-T-4	GeneID	3604

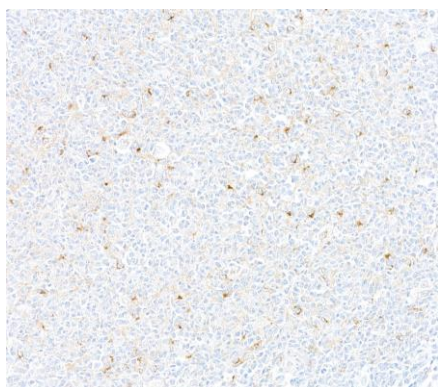
APPLICATIONS	WB, IP, IHC, ICC, Flow Cyt
SPECIES REACTIVITY	Human
AMOUNT	10 µl (5+ tests)
CONCENTRATION	1000 µg/ml
STORAGE/SHELF LIFE	2 - 8°C / 1 year from date of receipt
PHYSICAL STATE	Liquid
BUFFER	Borate Buffered Saline (BBS) pH 8.2 with 0.09% Sodium Azide, BSA-Free
ISOTYPE	IgG
CLONE #	BLR051F
ORIGIN	USA
PRODUCTION PROCEDURES	Recombinant antibody was purified from cell culture supernatant. Immunogen was a recombinant protein representing the extracellular domain of human CD137 (residues 24-189, NP_001552.2).
APPLICATIONS	Centrifuge tube to remove product from lid. Optimal working dilutions should be determined experimentally by the investigator. Prepare working dilution immediately before use. Western Blot 1:1000 Immunoprecipitation 20 µl/1 mg lysate Immunohistochemistry 1:100 to 1:500. Epitope retrieval with citrate buffer pH6.0 is recommended for FFPE tissue sections. Immunocytochemistry 1:100 to 1:500. Epitope retrieval with citrate buffer pH6.0 is recommended for FFPE cell sections. Flow Cytometry Live or cells fixed in 4% formaldehyde and permeabilized with 90% methanol. 0.25 ul per 1 x 10 ⁶ cells.
IHC HUMAN CONTROLS	Tonsil, HDLM-2 Cells
ADDITIONAL INFO	https://www.fortislife.com/p/A700-051-T Use the link above to view SDS, a current list of citations, and other product specific information.

This document certifies that this product has met all of the quality control standards defined by Bethyl Laboratories, Inc.
Michael Spencer, PhD Date: February 28, 2023

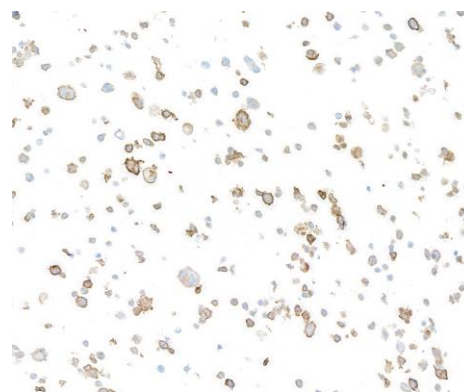


Detection of human CD137 by western blot. Samples: Whole cell lysate (50 µg) from HeLa, HEK293T, HDLM-2, My-La CD4+, and Hep-G2 cells prepared using NETN lysis buffer. **Antibody:** Rabbit anti-CD137 recombinant monoclonal antibody [BLR051F] (A700-051 lot 4) used at 1:1000. **Secondary:** HRP-conjugated goat anti-rabbit IgG (A120-101P). Chemiluminescence with an exposure time of 3 minutes. Lower Panel: Rabbit anti-Actin recombinant monoclonal antibody [BLR057F] (A700-057).

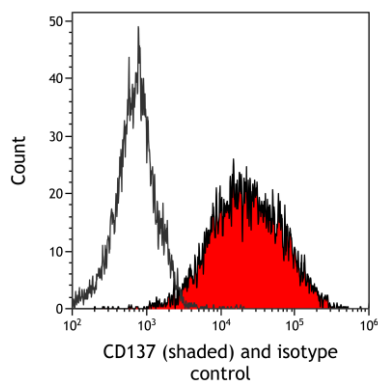
Detection of human CD137 by western blot of immunoprecipitates. Samples: Whole cell lysate (1.0 mg per IP reaction; 20% of IP loaded) from HDLM-2 cells prepared using NETN lysis buffer. **Antibodies:** Rabbit anti-CD137 recombinant monoclonal antibody [BLR051F] (A700-051 lot 4) used for IP at 6 µl/mg lysate. CD137 was also immunoprecipitated by a previous lot of this antibody (A700-051 lot 3). For blotting immunoprecipitated CD137, A700-051 was used at 1:1000. Chemiluminescence with an exposure time of 30 seconds.



Detection of human CD137 in FFPE tonsil by IHC. Antibody: Rabbit anti-CD137 recombinant monoclonal antibody [BLR051F] (A700-051). **Secondary:** HRP-conjugated goat anti-rabbit IgG (A120-501P). **Substrate:** DAB.



Detection of human CD137 in FFPE HDLM-2 by ICC. Antibody: Rabbit anti-CD137 recombinant monoclonal antibody [BLR051F] (A700-051). **Secondary:** HRP-conjugated goat anti-rabbit IgG (A120-501P). **Substrate:** DAB.



Detection of human CD137 (shaded) in HDLM-2 cells by flow cytometry. *Antibody:* Rabbit anti-CD137 recombinant monoclonal antibody [BLR051F] (A700-051) or isotype control (unshaded). *Secondary:* DyLight® 488-conjugated goat anti-rabbit IgG (A120-101D2).