

Rad21 Recombinant Monoclonal Antibody [BLR052F]

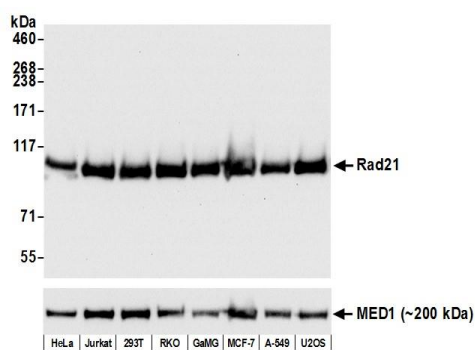
Rabbit Recombinant Monoclonal

Purified Protein ID NP_006256.1
Catalog No. A700-052-T GeneID 5885
Lot No. A700-052-T-1

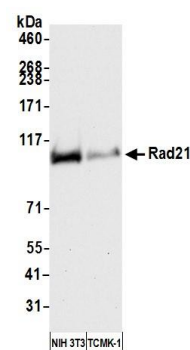


APPLICATIONS	WB
SPECIES REACTIVITY	Human, Mouse
AMOUNT	20 µl (2 blots)
CONCENTRATION	40 µg/ml
STORAGE/SHELF LIFE	2 – 8° C / 1 year from date of receipt
PHYSICAL STATE	Liquid
BUFFER	Borate Buffered Saline (BBS) pH 8.2 with 0.1% BSA and 0.09% Sodium Azide
ISOTYPE	IgG
CLONE #	BLR052F
ORIGIN	USA
PRODUCTION PROCEDURES	Recombinant antibody was purified from cell culture supernatant. Immunogen was a peptide representing a region between residue 581 and the C-terminus (residue 631) of human Double-strand-break repair protein Rad21 homolog using the numbering given in entry NP_006256.1 (Gene ID 5885).
APPLICATIONS	Centrifuge tube to remove product from lid. Optimal working dilutions should be determined experimentally by the investigator. Prepare working dilution immediately before use. Western Blot 1:1000
ADDITIONAL INFO	https://www.bethyl.com/product/A700-052-T Use the link above to view SDS, a current list of citations, and other product specific information.

This document certifies that this product has met all of the quality control standards defined by Bethyl Laboratories, Inc.
Eric McIntush, PhD | Chief Scientific Officer Date: June 21, 2019



Detection of human Rad21 by western blot. *Samples:* Whole cell lysate (50 μ g) from HeLa, Jurkat, HEK293T, RKO, GaMG, MCF-7, A-549, and U2OS cells prepared using NETN lysis buffer. *Antibody:* Rabbit anti-Rad21 recombinant monoclonal antibody [BLR052F] (A700-052-T lot 1) used at 1:1000. *Secondary:* HRP-conjugated goat anti-rabbit IgG (A120-101P). Chemiluminescence with an exposure time of 3 seconds. Lower panel: Rabbit anti-MED1 recombinant monoclonal antibody (A700-037).



Detection of mouse Rad21 by western blot. *Samples:* Whole cell lysate (50 μ g) from NIH 3T3 and TCMK-1 cells prepared using NETN lysis buffer. *Antibody:* Rabbit anti-Rad21 recombinant monoclonal antibody [BLR052F] (A700-052-T lot 1) used at 1:1000. *Secondary:* HRP-conjugated goat anti-rabbit IgG (A120-101P). Chemiluminescence with an exposure time of 3 seconds.