

CD30 Recombinant Monoclonal Antibody [BLR055F]

Rabbit Recombinant Monoclonal

Purified Protein ID NP_001234.3
Catalog No. A700-055-T GeneID 943
Lot No. A700-055-T-1



APPLICATIONS WB, IP, IHC, ICC, IHC-IF
SPECIES REACTIVITY Human
AMOUNT 10 µl (5+ tests)
CONCENTRATION 250 µg/ml
STORAGE/SHELF LIFE 2 – 8° C / 1 year from date of receipt
PHYSICAL STATE Liquid
BUFFER Borate Buffered Saline (BBS) pH 8.2 with 0.1% BSA and 0.09% Sodium Azide
ISOTYPE IgG
CLONE # BLR055F
ORIGIN USA
PRODUCTION PROCEDURES Recombinant antibody was purified from cell culture supernatant.
Immunogen was a recombinant protein representing the extracellular domain of human CD30 (residues 19–385, NP_001234.3).

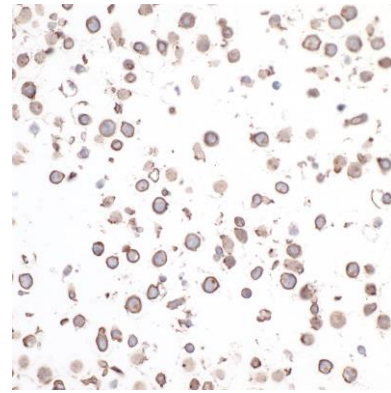
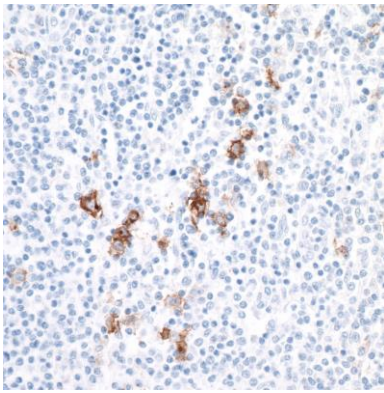
APPLICATIONS Centrifuge tube to remove product from lid. Optimal working dilutions should be determined experimentally by the investigator. Prepare working dilution immediately before use.

Western Blot 1:1000
Immunoprecipitation 5 µl/1 mg lysate
Immunohistochemistry 1:100 to 1:500. Epitope retrieval with citrate buffer pH6.0 is recommended for FFPE tissue sections.
Immunocytochemistry 1:100 to 1:500. Epitope retrieval with citrate buffer pH6.0 is recommended for FFPE cell sections.
Immunofluorescence (IHC) 1:100 to 1:500. Epitope retrieval with citrate buffer pH6.0 is recommended for FFPE tissue sections.

IHC HUMAN CONTROLS Tonsil, HDLM-2 Cells, K-562 Cells, SR cells, SUP-M2 Cells

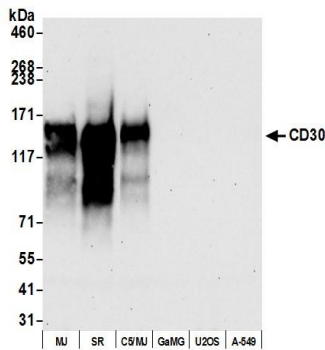
ADDITIONAL INFO <https://www.bethyl.com/product/A700-055-T>
Use the link above to view SDS, a current list of citations, and other product specific information.

This document certifies that this product has met all of the quality control standards defined by Bethyl Laboratories, Inc.
Eric McIntush, PhD | Chief Scientific Officer Date: June 21, 2019

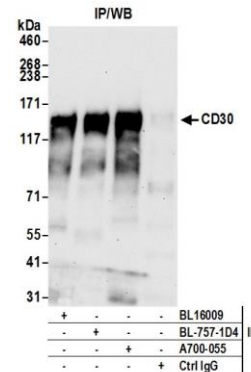


Detection of human CD30 by immunohistochemistry.
Sample: FFPE section of human tonsil. *Antibody:* Rabbit anti-CD30 recombinant monoclonal antibody [BLR055F] (A700-055-T lot 1) used at 1:250. *Secondary:* HRP-conjugated goat anti-rabbit IgG (A120-501P). *Substrate:* DAB.

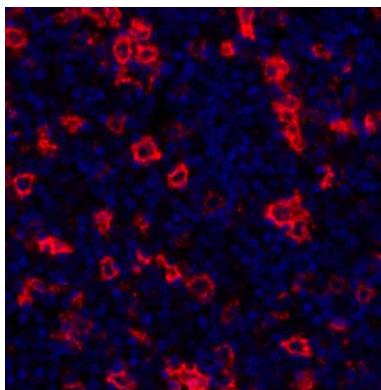
Detection of human CD30 by immunocytochemistry.
Sample: FFPE section of human SR cells. *Antibody:* Rabbit anti-CD30 recombinant monoclonal antibody [BLR055F] (A700-055-T lot 1) used at 1:250. *Secondary:* HRP-conjugated goat anti-rabbit IgG (A120-501P). *Substrate:* DAB.



Detection of human CD30 by western blot. *Samples:* Whole cell lysate (50 µg) from MJ, SR, C5/MJ, GaMG, U2OS and A-549 cells prepared using NETN lysis buffer. *Antibody:* Rabbit anti-CD30 recombinant monoclonal antibody [BLR055F] (A700-055-T lot 1) used at 1:1000. *Secondary:* HRP-conjugated goat anti-rabbit IgG (A120-101P). Chemiluminescence with an exposure time of 30 seconds.



Detection of human CD30 by western blot of immunoprecipitates. *Samples:* Whole cell lysate (1.0 mg per IP reaction; 20% of IP loaded) from MJ cells prepared using NETN lysis buffer. *Antibodies:* Rabbit anti-CD30 recombinant monoclonal antibody [BLR055F] (A700-055-T lot 1) used for IP at 5 µl per reaction. CD30 was also immunoprecipitated by a rabbit anti-CD30 antibody (BL16009) and rabbit anti-CD30 recombinant monoclonal antibody (BL-757-1D4). For blotting immunoprecipitated CD30, A700-055-T was used at 1:1000. Chemiluminescence with an exposure time of 30 seconds.



Detection of human CD30 (red) by immunohistochemistry. *Sample:* FFPE section of human tonsil. *Antibody:* Rabbit anti-CD30 recombinant monoclonal antibody [BLR055F] (A700-055-T lot 1) used at 1:250. *Secondary:* HRP-conjugated goat anti-rabbit IgG (A120-501P). *Substrate:* Opal™. *Counterstain:* DAPI (blue).