

CD30 Recombinant Monoclonal Antibody [BLR055F]

Rabbit Recombinant Monoclonal

Purified		RefSeq ID	NP_001234.3
Catalog No.	A700-055-T	Uniprot ID	P28908
Lot No.	2	GeneID	943

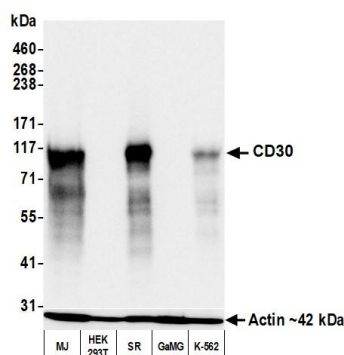
APPLICATIONS	WB, IP, IHC, ICC, IHC-IF, Flow Cyt
SPECIES REACTIVITY	Human
AMOUNT	10 µl (5+ tests)
CONCENTRATION	250 µg/ml
STORAGE/SHELF LIFE	2 - 8°C / 1 year from date of receipt
PHYSICAL STATE	Liquid
BUFFER	Borate Buffered Saline (BBS) pH 8.2 with 0.1% BSA and 0.09% Sodium Azide
ISOTYPE	IgG
CLONE #	BLR055F
ORIGIN	USA
PRODUCTION PROCEDURES	Recombinant antibody was purified from cell culture supernatant. Immunogen was a recombinant protein representing the extracellular domain of human CD30 (residues 19-385, NP_001234.3).

APPLICATIONS	Centrifuge tube to remove product from lid. Optimal working dilutions should be determined experimentally by the investigator. Prepare working dilution immediately before use. Western Blot 1:1000 Immunoprecipitation 5 µl/1 mg lysate Immunohistochemistry 1:100 to 1:500. Epitope retrieval with citrate buffer pH6.0 is recommended for FFPE tissue sections. Immunocytochemistry 1:100 to 1:500. Epitope retrieval with citrate buffer pH6.0 is recommended for FFPE cell sections. Immunofluorescence (IHC) 1:100 to 1:500. Epitope retrieval with citrate buffer pH6.0 is recommended for FFPE tissue sections. Flow Cytometry Fixed and permeabilized cells were stained with 0.8 µl per 1 x 10 ⁶ cells.
---------------------	--

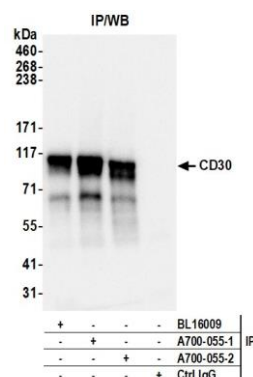
IHC HUMAN CONTROLS Tonsil, HDLM-2 Cells, K-562 Cells, SR Cells, SUP-M2 Cells

ADDITIONAL INFO <https://www.fortislife.com/p/A700-055-T>
Use the link above to view SDS, a current list of citations, and other product specific information.

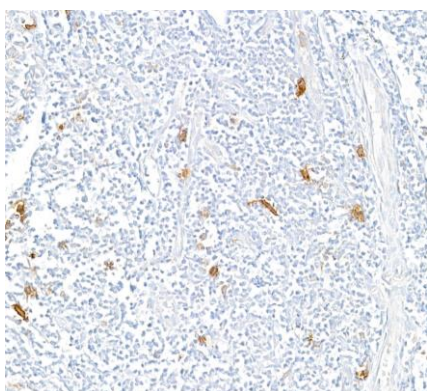
This document certifies that this product has met all of the quality control standards defined by Bethyl Laboratories, Inc.
Michael Spencer, PhD Date: July 13, 2023



Detection of human CD30 by western blot. *Samples:* Whole cell lysate (50 µg) from MJ, HEK293T, SR, GaMG, and K-562 cells prepared using NETN lysis buffer. *Antibody:* Rabbit anti-CD30 recombinant monoclonal antibody [BLR055F] (A700-055 lot 2) used at 1:1000. *Secondary:* HRP-conjugated goat anti-rabbit IgG (A120-101P). *Detection:* Chemiluminescence with an exposure time of 3 seconds. Lower Panel: Rabbit anti-Actin recombinant monoclonal antibody [BLR057F] (A700-057).



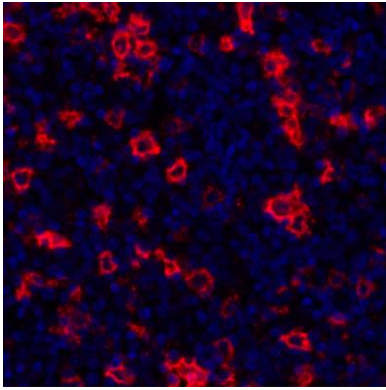
Detection of human CD30 by western blot of immunoprecipitates. *Samples:* Whole cell lysate (1.0 mg per IP reaction; 20% of IP loaded) from MJ cells prepared using NETN lysis buffer. *Antibodies:* Rabbit anti-CD30 recombinant monoclonal antibody [BLR055F] (A700-055 lot 2) used for IP at 20 µl/mg lysate. CD30 was also immunoprecipitated by a previous lot of this antibody (A700-055 lot 1) and a second antibody against a different epitope of CD30 (BL16009). For blotting immunoprecipitated CD30, A700-055 was used at 1:1000. *Detection:* Chemiluminescence with an exposure time of 3 seconds.



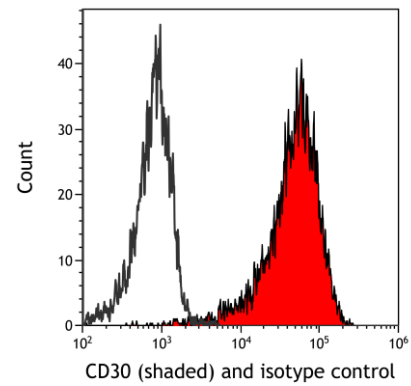
Detection of human CD30 by immunohistochemistry. *Sample:* FFPE section of human tonsil. *Antibody:* Rabbit anti-CD30 recombinant monoclonal antibody [BLR055F] (A700-055). *Secondary:* HRP-conjugated goat anti-rabbit IgG (A120-501P).



Detection of human CD30 by immunocytochemistry. *Sample:* FFPE section of SR cells. *Antibody:* Rabbit anti-CD30 recombinant monoclonal antibody [BLR055F] (A700-055). *Secondary:* HRP-conjugated goat anti-rabbit IgG (A120-501P).



Detection of human CD30 (red) by immunohistochemistry. *Sample:* FFPE section of human tonsil. *Antibody:* Rabbit anti-CD30 recombinant monoclonal antibody [BLR055F] (A700-055) used at 1:250. *Secondary:* HRP-conjugated goat anti-rabbit IgG (A120-501P). *Substrate:* Opal™. *Counterstain:* DAPI (blue).



Detection of human CD30 (shaded) in MJ[G11] cells by flow cytometry. *Antibody:* Rabbit anti-CD30 recombinant monoclonal [BLR055F] (A700-055) or isotype control (unshaded). *Secondary:* DyLight® 488-conjugated goat anti-rabbit IgG (A120-101D2).