

CD40 Recombinant Monoclonal Antibody [BLR056F]

Rabbit Recombinant Monoclonal

Purified Protein ID NP_001241.1
Catalog No. A700-056-T GeneID 958
Lot No. A700-056-T-1



APPLICATIONS WB, IP, IHC, ICC, IHC-IF
SPECIES REACTIVITY Human
AMOUNT 10 µl (5+ tests)
CONCENTRATION 250 µg/ml
STORAGE/SHELF LIFE 2 - 8° C / 1 year from date of receipt
PHYSICAL STATE Liquid
BUFFER Borate Buffered Saline (BBS) pH 8.2 with 0.1% BSA and 0.09% Sodium Azide
ISOTYPE IgG
CLONE # BLR056F
ORIGIN USA
PRODUCTION PROCEDURES Recombinant antibody was purified from cell culture supernatant.

Immunogen was a peptide representing a region between residue 227 and the C-terminus (residue 277) of human Tumor necrosis factor receptor superfamily member 5 isoform 1 precursor (TNFR5, CD40) using the numbering given in entry NP_001241.1 (Gene ID 958).

APPLICATIONS Centrifuge tube to remove product from lid. Optimal working dilutions should be determined experimentally by the investigator. Prepare working dilution immediately before use.

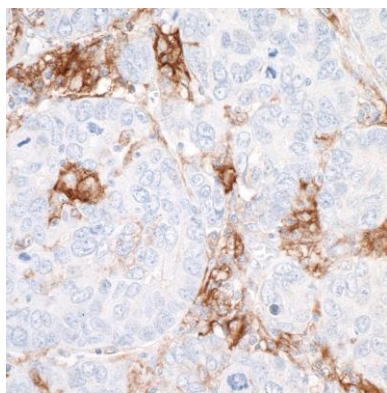
Western Blot	1:1000
Immunoprecipitation	5 µl/1 mg lysate
Immunohistochemistry	1:100 to 1:500. Epitope retrieval with citrate buffer pH6.0 is recommended for FFPE tissue sections.
Immunocytochemistry	1:100 to 1:500. Epitope retrieval with citrate buffer pH6.0 is recommended for FFPE cell sections.
Immunofluorescence (IHC)	1:100 to 1:500. Epitope retrieval with citrate buffer pH6.0 is recommended for FFPE tissue sections.

IHC HUMAN CONTROLS Breast Carcinoma, Head and Neck Squamous Cell Carcinoma, Lung Carcinoma, Tonsil, C5/MJ Cells, Daudi Cells, HDLM-2 Cells, Raji Cells

ADDITIONAL INFO <https://www.bethyl.com/product/A700-056-T>

Use the link above to view SDS, a current list of citations, and other product specific information.

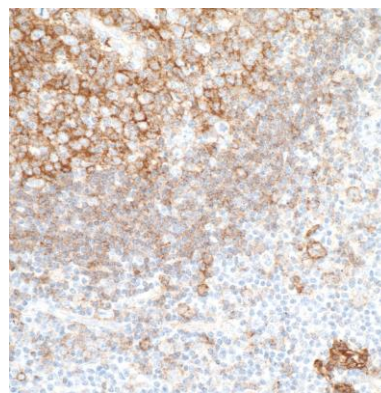
This document certifies that this product has met all of the quality control standards defined by Bethyl Laboratories, Inc.
Eric McIntush, PhD | Chief Scientific Officer Date: June 21, 2019

**Detection of human CD40 by immunohistochemistry.**

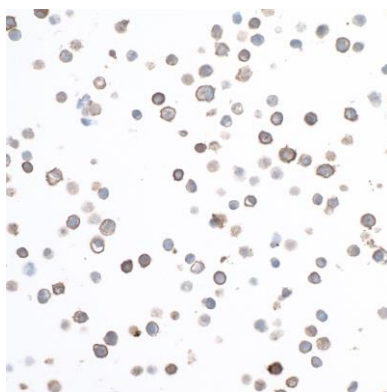
Sample: FFPE section of human breast carcinoma.

Antibody: Rabbit anti-CD40 recombinant monoclonal antibody [BLR056F] (A700-056-T lot 1) used at 1:250.

Secondary: HRP-conjugated goat anti-rabbit IgG (A120-501P). *Substrate:* DAB.

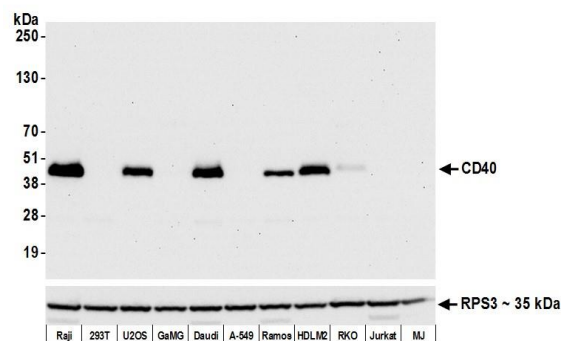
**Detection of human CD40 by immunohistochemistry.**

Sample: FFPE section of human tonsil. *Antibody:* Rabbit anti-CD40 recombinant monoclonal antibody [BLR056F] (A700-056-T lot 1) used at 1:250. *Secondary:* HRP-conjugated goat anti-rabbit IgG (A120-501P). *Substrate:* DAB.

**Detection of human CD40 by immunocytochemistry.**

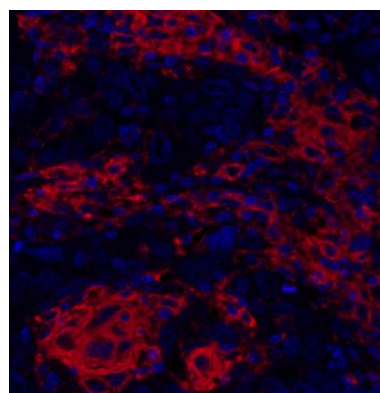
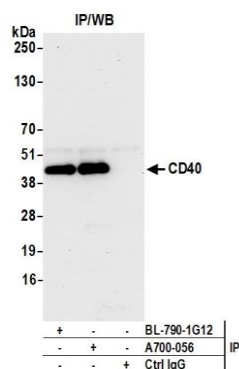
Sample: FFPE section of Raji cells. *Antibody:* Rabbit anti-CD40 recombinant monoclonal antibody [BLR056F] (A700-056-T lot 1) used at 1:250. *Secondary:* HRP-conjugated goat anti-rabbit IgG (A120-501P). *Substrate:* DAB.

Secondary: HRP-conjugated goat anti-rabbit IgG (A120-501P). *Substrate:* DAB.

**Detection of human CD40 by western blot. Samples:**

Whole cell lysate (50 μ g) from Raji, HEK293T, U2OS, GaMG, Daudi, A-549, Ramos, HDLM-2, RKO, Jurkat, and MJ cells prepared using NETN lysis buffer. *Antibody:* Rabbit anti-CD40 recombinant monoclonal antibody [BLR056F] (A700-056-T lot 1) used at 1:1000. *Secondary:* HRP-conjugated goat anti-rabbit IgG (A120-101P).

Chemiluminescence with an exposure time of 10 seconds. Lower Panel: Rabbit anti-RPS3 (A303-840A).



Detection of human CD40 by western blot of immunoprecipitates. *Samples:* Whole cell lysate (1.0 mg per IP reaction; 20% of IP loaded) from Raji cells prepared using NETN lysis buffer. *Antibodies:* Rabbit anti-CD40 recombinant monoclonal antibody [BLR056F] (A700-056-T lot 1) used for IP at 5 μ l per reaction. CD40 was also immunoprecipitated by rabbit anti-CD40 recombinant monoclonal antibody (BL-790-1G12). For blotting immunoprecipitated CD40, A700-056-T was used at 1:1000. Chemiluminescence with an exposure time of 10 seconds.

Detection of human CD40 (red) by immunohistochemistry. *Sample:* FFPE section of human breast carcinoma. *Antibody:* Rabbit anti-CD40 recombinant monoclonal antibody [BLR056F] (A700-056-T lot 1) used at 1:250. *Secondary:* HRP-conjugated goat anti-rabbit IgG (A120-501P). *Substrate:* Opal™. *Counterstain:* DAPI (blue).