

Cytoskeletal Actin Recombinant Monoclonal Antibody [BLR057F]

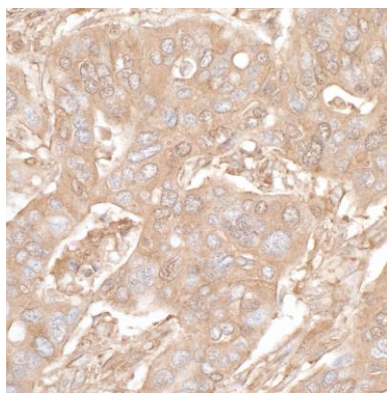
Rabbit Recombinant Monoclonal

Purified Protein ID NP_001092.1
Catalog No. A700-057-T GeneID 60
Lot No. A700-057-T-1

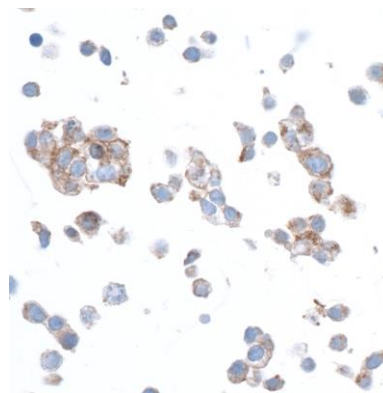


APPLICATIONS	WB, IHC, ICC
SPECIES REACTIVITY	Human, Mouse
AMOUNT	10 µl (5+ tests)
CONCENTRATION	10 µg/ml
STORAGE/SHELF LIFE	2 - 8° C / 1 year from date of receipt
PHYSICAL STATE	Liquid
BUFFER	Borate Buffered Saline (BBS) pH 8.2 with 0.1% BSA and 0.09% Sodium Azide
ISOTYPE	IgG
CLONE #	BLR057F
ORIGIN	USA
PRODUCTION PROCEDURES	Recombinant antibody was purified from cell culture supernatant. Immunogen was a peptide representing a region between residues 1 and 50 of human Actin Beta using the numbering given in entry NP_001092.1 (Gene ID 60).
APPLICATIONS	Centrifuge tube to remove product from lid. Optimal working dilutions should be determined experimentally by the investigator. Prepare working dilution immediately before use. Western Blot 1:1000 Immunohistochemistry 1:100 to 1:500. Epitope retrieval with citrate buffer pH6.0 is recommended for FFPE tissue sections. Immunocytochemistry 1:100 to 1:500. Epitope retrieval with citrate buffer pH6.0 is recommended for FFPE cell sections.
IHC HUMAN CONTROLS	Breast Carcinoma, Head and Neck Squamous Cell Carcinoma, Lung Carcinoma, Tonsil, C5/MJ Cells, Daudi Cells, HDLM-2 Cells, Raji Cells
ADDITIONAL INFO	https://www.bethyl.com/product/A700-057-T Use the link above to view SDS, a current list of citations, and other product specific information.

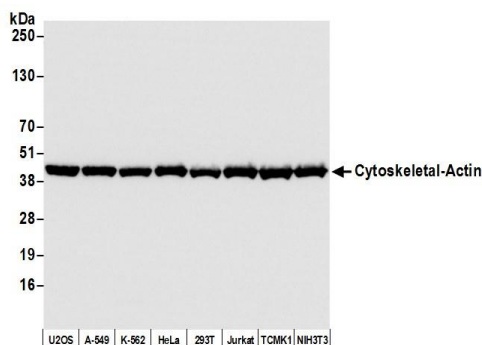
This document certifies that this product has met all of the quality control standards defined by Bethyl Laboratories, Inc.
Eric McIntush, PhD | Chief Scientific Officer Date: June 21, 2019



Detection of human Cytoskeletal Actin by immunohistochemistry. *Sample:* FFPE section of human ovarian carcinoma. *Antibody:* Rabbit anti-Cytoskeletal Actin recombinant monoclonal antibody [BLR057F] (A700-057-T lot 1) used at 1:400. *Secondary:* HRP-conjugated goat anti-rabbit IgG (A120-501P). *Substrate:* DAB.



Detection of human Cytoskeletal Actin by immunocytochemistry. *Sample:* FFPE section of HeLa cells. *Antibody:* Rabbit anti-Cytoskeletal Actin recombinant monoclonal antibody [BLR057F] (A700-057-T lot 1) used at 1:200. *Secondary:* HRP-conjugated goat anti-rabbit IgG (A120-501P). *Substrate:* DAB.



Detection of human and mouse Cytoskeletal Actin by western blot. *Samples:* Whole cell lysate (50 µg) from U2OS, A-549, K-562, HeLa, HEK293T, Jurkat, TCMK-1, and NIH 3T3 cells prepared using NETN lysis buffer. *Antibody:* Rabbit anti-Cytoskeletal Actin recombinant monoclonal antibody [BLR057F] (A700-057-T lot 1) used at 1:1000. *Secondary:* HRP-conjugated goat anti-rabbit IgG (A120-101P). Chemiluminescence with an exposure time of 1 second.