

# NAMPT/PBEF/Visfatin Recombinant Monoclonal Antibody [BLR058F]

Rabbit Recombinant Monoclonal

Purified Protein ID NP\_005737.1  
Catalog No. A700-058-T GeneID 10135  
Lot No. A700-058-T-1



**APPLICATIONS** WB, IP, IHC, ICC, F  
**SPECIES REACTIVITY** Human, Mouse  
**AMOUNT** 10 µl (5+ tests)  
**CONCENTRATION** 250 µg/ml  
**STORAGE/SHELF LIFE** 2 – 8° C / 1 year from date of receipt  
**PHYSICAL STATE** Liquid  
**BUFFER** Borate Buffered Saline (BBS) pH 8.2 with 0.1% BSA and 0.09% Sodium Azide  
**ISOTYPE** IgG  
**CLONE #** BLR058F  
**ORIGIN** USA  
**PRODUCTION PROCEDURES** Recombinant antibody was purified from cell culture supernatant.

Immunogen was a peptide representing a region between residue 400 and 450 of human Nicotinamide phosphoribosyltransferase precursor (NAMPT), using the numbering given in entry NP\_005737.1 (Gene ID 10135).

**APPLICATIONS** Centrifuge tube to remove product from lid. Optimal working dilutions should be determined experimentally by the investigator. Prepare working dilution immediately before use.

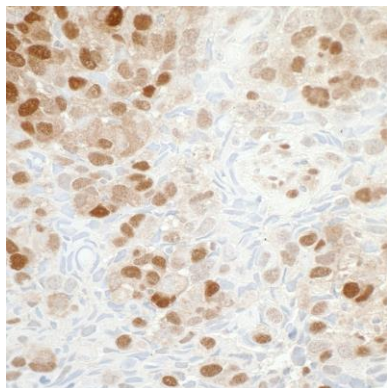
Western Blot 1:1000  
Immunoprecipitation 5 µl/1 mg lysate  
Immunohistochemistry 1:100 to 1:500. Epitope retrieval with citrate buffer pH6.0 is recommended for FFPE tissue sections.  
Immunocytochemistry 1:100 to 1:500. Epitope retrieval with citrate buffer pH6.0 is recommended for FFPE cell sections.  
Flow Cytometry Fixed in 4% formaldehyde and permeabilized with 90% methanol. 1 µl per 1 x 10<sup>6</sup> cells.

**IHC HUMAN CONTROLS** Bladder Cell Carcinoma, Breast Carcinoma, Ovarian Carcinoma, Jurkat Cells, KG-1 Cells, MOLT-4 Cells, NCI-H226 Cells

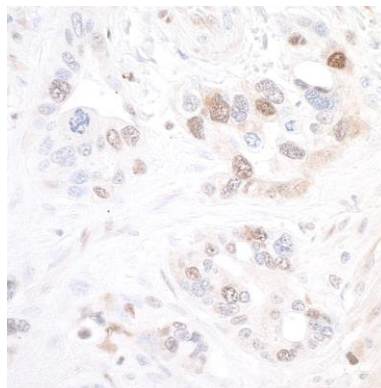
**ADDITIONAL INFO** <https://www.bethyl.com/product/A700-058-T>  
Use the link above to view SDS, a current list of citations, and other product specific information.

This document certifies that this product has met all of the quality control standards defined by Bethyl Laboratories, Inc.  
Eric McIntush, PhD | Chief Scientific Officer Date: August 15, 2019

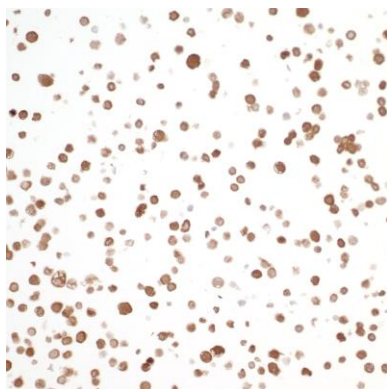
# NAMPT/PBEF/Visfatin Recombinant Monoclonal Antibody [BLR05 A700-058-T



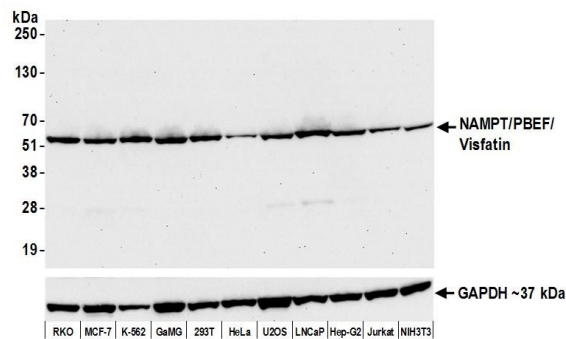
**Detection of human NAMPT/PBEF/Visfatin by immunohistochemistry.** *Sample:* FFPE section of human breast carcinoma. *Antibody:* Rabbit anti-NAMPT/PBEF/Visfatin recombinant monoclonal antibody [BLR058F] (A700-058-T lot 1) used at 1:250. *Secondary:* HRP-conjugated goat anti-rabbit IgG (A120-501P). *Substrate:* DAB.



**Detection of human NAMPT/PBEF/Visfatin by immunohistochemistry.** *Sample:* FFPE section of human ovarian carcinoma. *Antibody:* Rabbit anti-NAMPT/PBEF/Visfatin recombinant monoclonal antibody [BLR058F] (A700-058-T lot 1) used at 1:250. *Secondary:* HRP-conjugated goat anti-rabbit IgG (A120-501P). *Substrate:* DAB.

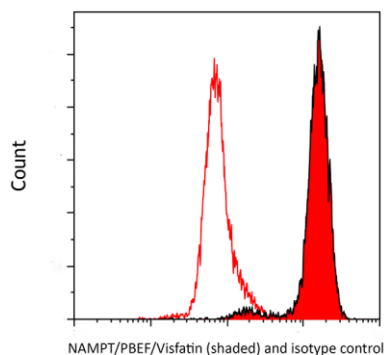
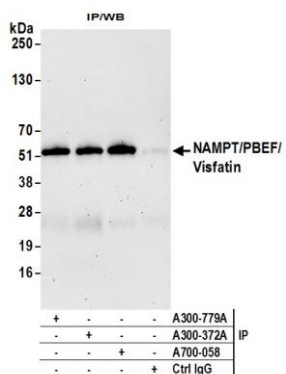


**Detection of human NAMPT/PBEF/Visfatin by immunocytochemistry.** *Sample:* FFPE section of NCI-H460. *Antibody:* Rabbit anti-NAMPT/PBEF/Visfatin recombinant monoclonal antibody [BLR058F] (A700-058-T lot 1) used at 1:250. *Secondary:* HRP-conjugated goat anti-rabbit IgG (A120-501P). *Substrate:* DAB.



**Detection of human and mouse NAMPT/PBEF/Visfatin by western blot.** *Samples:* Whole cell lysate (50 µg) from RKO, MCF-7, K-562, GaMG, HEK293T, HeLa, U2OS, LNCaP, Hep-G2, Jurkat, and NIH 3T3 cells prepared using NETN lysis buffer. *Antibody:* Rabbit anti-NAMPT/PBEF/Visfatin recombinant monoclonal antibody [BLR058F] (A700-058-T lot 1) used at 1:1000. *Secondary:* HRP-conjugated goat anti-rabbit IgG (A120-101P). Chemiluminescence with an exposure time of 30 seconds. Lower Panel: Rabbit anti-GAPDH A300-639A.

# NAMPT/PBEF/Visfatin Recombinant Monoclonal Antibody [BLR05 A700-058-T



**Detection of human NAMPT/PBEF/Visfatin by western blot of immunoprecipitates.** *Samples:* Whole cell lysate (1.0 mg per IP reaction; 20% of IP loaded) from HEK293T cells prepared using NETN lysis buffer. *Antibodies:* Rabbit anti-NAMPT/PBEF/Visfatin recombinant monoclonal antibody [BLR058F] (A700-058-T lot 1) used for IP at 5  $\mu$ l per reaction. NAMPT/PBEF/Visfatin was also immunoprecipitated by rabbit anti-NAMPT/PBEF/Visfatin antibodies (A300-779A and A300-372A). For blotting immunoprecipitated NAMPT/PBEF/Visfatin, A700-058-T was used at 1:1000. Chemiluminescence with an exposure time of 75 seconds.

**Detection of human NAMPT/PBEF/Visfatin (shaded) in MOLT4 cells by flow cytometry.** *Antibody:* Rabbit anti-NAMPT/PBEF/Visfatin recombinant monoclonal [BLR058F] (A700-058-T lot 1) or isotype control (unshaded). *Secondary:* DyLight® 650-conjugated goat anti-rabbit IgG (A120-201D5).