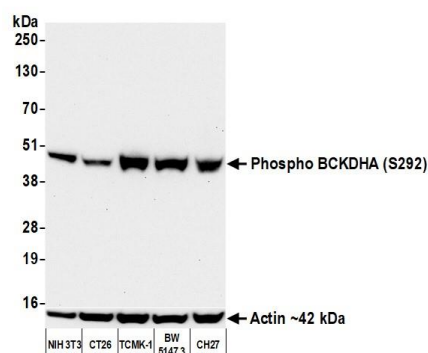
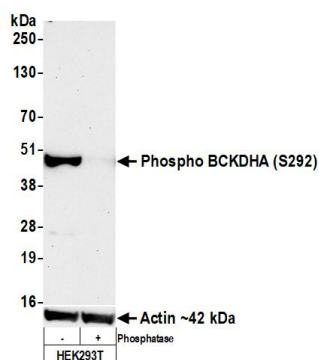


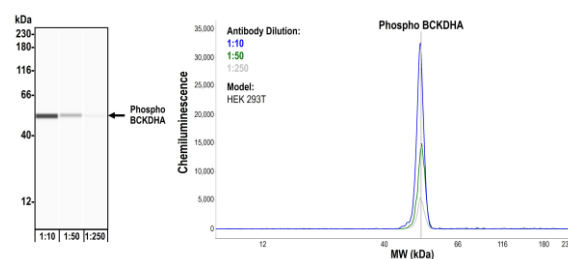
**Detection of human Phospho BCKDHA (S292) by western blot.** *Samples:* Whole cell lysate (50 µg) from HEK293T, GaMG, Hep-G2, HeLa, and LNCaP cells prepared using NETN lysis buffer. *Antibody:* Rabbit anti-Phospho-BCKDHA-S292 recombinant monoclonal antibody [BLR060F] (A700-060 lot 3) used at 1:1000. *Secondary:* HRP-conjugated goat anti-rabbit IgG (A120-101P). *Detection:* Chemiluminescence with an exposure time of 3 minutes. Lower Panel: Rabbit anti-Actin recombinant monoclonal antibody [BLR057F] (A700-057).



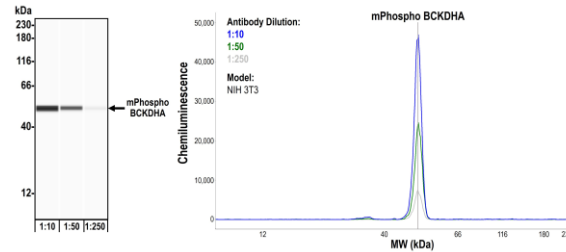
**Detection of mouse Phospho BCKDHA (S292) by western blot.** *Samples:* Whole cell lysate (50 µg) from NIH 3T3, CT26, TCMK-1, BW5147.3, and CH27 cells prepared using NETN lysis buffer. *Antibody:* Rabbit anti-Phospho BCKDHA (S292) recombinant monoclonal antibody [BLR060F] (A700-060 lot 3) used at 1:1000. *Secondary:* HRP-conjugated goat anti-rabbit IgG (A120-101P). *Detection:* Chemiluminescence with an exposure time of 75 seconds. Lower Panel: Rabbit anti-Actin recombinant monoclonal antibody [BLR057F] (A700-057).



**Detection of human Phospho BCKDHA (S292) by western blot.** *Samples:* Whole cell lysate (50 µg) from HEK293T cells mock treated (-) or treated with phosphatases (+). *Antibody:* Rabbit anti-Phospho BCKDHA (S292) recombinant monoclonal antibody [BLR060F] (A700-060 lot 3) used at 1:1000. *Secondary:* HRP-conjugated goat anti-rabbit IgG (A120-101P). *Detection:* Chemiluminescence with an exposure time of 3 minutes. Lower Panel: Rabbit anti-Actin recombinant monoclonal antibody [BLR057F] (A700-057).



**Detection of human pBCKDHA (S292) by Simple Western™.** *Samples:* Whole cell lysate (0.08 mg/mL) from HEK293T cells prepared using NETN lysis buffer. *Antibody:* Rabbit anti-Phospho BCKDHA (S292) recombinant monoclonal antibody [BLR060F] (A700-060) used at 1:10, 1:50, and 1:250. *Separation and Detection:* SallySue ProteinSimple instrument with the 12-230 kDa separation module and anti-Rabbit detection module. Left Panel: Virtual Lane View. Right Panel: Electropherogram.



**Detection of mouse pBCKDHA (S292) by Simple Western™.** *Samples:* Whole cell lysate (0.4 mg/mL) from NIH 3T3 cells prepared using NETN lysis buffer. *Antibody:* Rabbit anti-Phospho BCKDHA (S292) recombinant monoclonal antibody [BLR060F] (A700-060) used at 1:10, 1:50, and 1:250. *Separation and Detection:* SallySue ProteinSimple instrument with the 12–230 kDa separation module and anti-Rabbit detection module. Left Panel: Virtual Lane View. Right Panel: Electropherogram.