

# CD33 Recombinant Monoclonal Antibody [BLR061G]

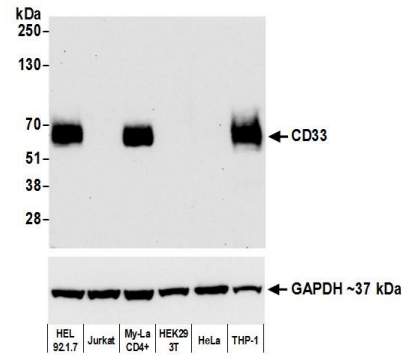
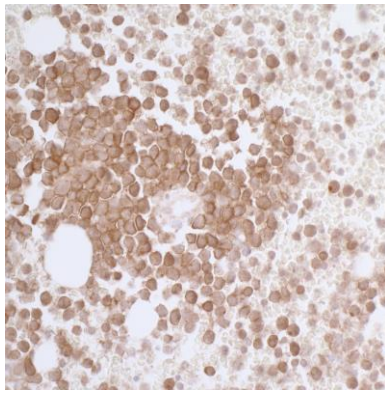
Rabbit Recombinant Monoclonal

Purified Protein ID NP\_001763.3  
Catalog No. A700-061 GeneID 945  
Lot No. A700-061-1



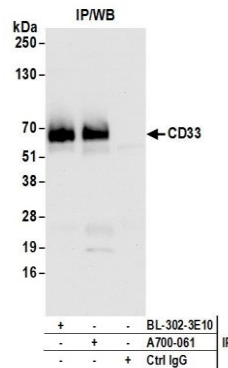
<b>APPLICATIONS</b>	WB, IP, IHC
<b>SPECIES REACTIVITY</b>	Human
<b>AMOUNT</b>	100 µl (50+ tests)
<b>CONCENTRATION</b>	100 µg/ml
<b>STORAGE/SHELF LIFE</b>	2 – 8° C / 1 year from date of receipt
<b>PHYSICAL STATE</b>	Liquid
<b>BUFFER</b>	Borate Buffered Saline (BBS) pH 8.2 with 0.1% BSA and 0.09% Sodium Azide
<b>ISOTYPE</b>	IgG
<b>CLONE #</b>	BLR061G
<b>ORIGIN</b>	USA
<b>PRODUCTION PROCEDURES</b>	Recombinant antibody was purified from cell culture supernatant.  Immunogen was a peptide representing a region between residue 314 and the C-terminus (residue 364) of human Myeloid cell surface antigen CD33 using the numbering given in entry NP_001763.3 (Gene ID 945).
<b>APPLICATIONS</b>	Centrifuge tube to remove product from lid. Optimal working dilutions should be determined experimentally by the investigator. Prepare working dilution immediately before use.  Western Blot 1:1000 Immunoprecipitation 20 µl/1 mg lysate Immunohistochemistry 1:100 to 1:500. Epitope retrieval with citrate buffer pH6.0 is recommended for FFPE sections.
<b>IHC HUMAN CONTROLS</b>	Acute Myeloid Leukemia (AML)
<b>ADDITIONAL INFO</b>	<a href="https://www.bethyl.com/product/A700-061">https://www.bethyl.com/product/A700-061</a> Use the link above to view SDS, a current list of citations, and other product specific information.

This document certifies that this product has met all of the quality control standards defined by Bethyl Laboratories, Inc.  
Eric McIntush, PhD | Chief Scientific Officer Date: June 21, 2019



**Detection of human CD33 by immunohistochemistry.**  
*Sample:* FFPE section of Acute Myeloid Leukemia (AML).  
*Antibody:* Rabbit anti-CD33 recombinant monoclonal antibody [BLR061G] (A700-061 lot 1) used at 1:200.  
*Secondary:* HRP-conjugated goat anti-rabbit IgG (A120-501P). *Substrate:* DAB.

**Detection of human CD33 by western blot.** *Samples:* Whole cell lysate (50 µg) from HEL 92.1.7, Jurkat, My-La CD4+, HEK293T, HeLa, and THP-1 cells prepared using NETN lysis buffer. *Antibody:* Rabbit anti-CD33 recombinant monoclonal antibody [BLR061G] (A700-061 lot 1) used at 1:1000. *Secondary:* HRP-conjugated goat anti-rabbit IgG (A120-101P). Chemiluminescence with an exposure time of 30 seconds. Lower Panel: Rabbit anti-GAPDH (A300-639A).



**Detection of human CD33 by western blot of immunoprecipitates.** *Samples:* Whole cell lysate (1.0 mg per IP reaction; 20% of IP loaded) from HEL 92.1.7 cells prepared using NETN lysis buffer. *Antibodies:* Rabbit anti-CD33 recombinant monoclonal antibody [BLR061G] (A700-061 lot 1) used for IP at 20 µl/mg lysate. CD33 was also immunoprecipitated by rabbit anti-CD33 recombinant monoclonal antibody [BL-302-3E10]. For blotting immunoprecipitated CD33, A700-061 was used at 1:1000. Chemiluminescence with an exposure time of 10 seconds.