

HVEM/TNFRSF14 Recombinant Monoclonal Antibody [BLR062G]

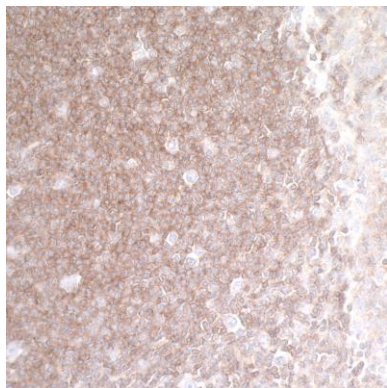
Rabbit Recombinant Monoclonal

Purified Protein ID NP_003811.2
Catalog No. A700-062-T GeneID 8764
Lot No. A700-062-T-1

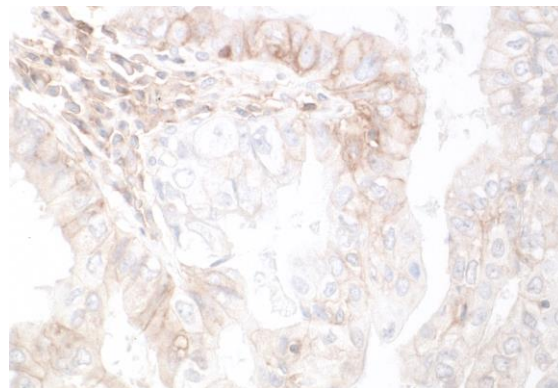


APPLICATIONS	WB, IHC, ICC
SPECIES REACTIVITY	Human
AMOUNT	10 µl (5+ tests)
CONCENTRATION	1000 µg/ml
STORAGE/SHELF LIFE	2 – 8° C / 1 year from date of receipt
PHYSICAL STATE	Liquid
BUFFER	Borate Buffered Saline (BBS) pH 8.2 with 0.09% Sodium Azide, BSA Free
ISOTYPE	IgG
CLONE #	BLR062G
ORIGIN	USA
PRODUCTION PROCEDURES	Recombinant antibody was purified from cell culture supernatant. Immunogen was a recombinant protein representing the extracellular domain of human TNF receptor superfamily member 14, transcript variant 1 (Herpesvirus entry mediator A, HVEM) (residues 39–200, NP_003811.2).
APPLICATIONS	Centrifuge tube to remove product from lid. Optimal working dilutions should be determined experimentally by the investigator. Prepare working dilution immediately before use. Western Blot 1:1000 Immunohistochemistry 1:100 to 1:500. Epitope retrieval with citrate buffer pH6.0 is recommended for FFPE tissue sections. Immunocytochemistry 1:100 to 1:500. Epitope retrieval with citrate buffer pH6.0 is recommended for FFPE cell sections.
IHC HUMAN CONTROLS	Lung Carcinoma, Ovarian Carcinoma, Tonsil, MDA-MB-435 Cells, SK-MEL-28 Cells, UACC-257 Cells
ADDITIONAL INFO	https://www.bethyl.com/product/A700-062-T Use the link above to view SDS, a current list of citations, and other product specific information.

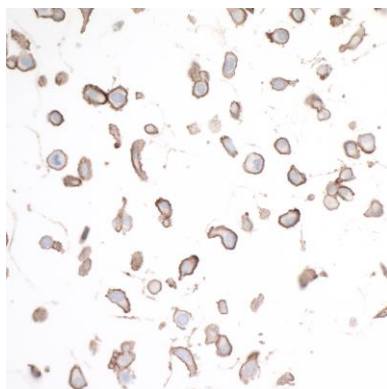
This document certifies that this product has met all of the quality control standards defined by Bethyl Laboratories, Inc.
Eric McIntush, PhD | Chief Scientific Officer Date: January 24, 2020



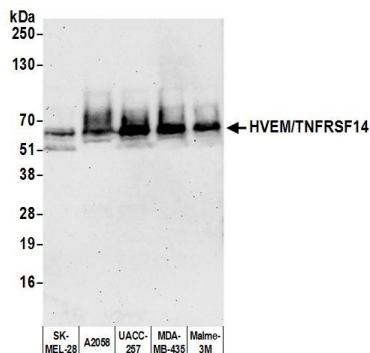
Detection of human HVEM/TNFRSF14 in FFPE lung carcinoma by IHC. *Antibody:* Rabbit anti-HVEM/TNFRSF14 recombinant monoclonal antibody [BLR062G] (A700-062-T lot 1). *Secondary:* HRP-conjugated goat anti-rabbit IgG (A120-501P). *Substrate:* DAB.



Detection of human HVEM/TNFRSF14 in FFPE tonsil by IHC. *Antibody:* Rabbit anti-HVEM/TNFRSF14 recombinant monoclonal antibody [BLR062G] (A700-062-T lot 1). *Secondary:* HRP-conjugated goat anti-rabbit IgG (A120-501P). *Substrate:* DAB.



Detection of human HVEM/TNFRSF14 in FFPE SK-MEL-28 cells by ICC. *Antibody:* Rabbit anti-HVEM/TNFRSF14 recombinant monoclonal antibody [BLR062G] (A700-062-T lot 1). *Secondary:* HRP-conjugated goat anti-rabbit IgG (A120-501P). *Substrate:* DAB.



Detection of human HVEM/TNFRSF14 by western blot. *Samples:* Whole cell lysate (50 µg) from SK-MEL-28, A2058, UACC-257, MDA-MB-435, and Malme-3M cells prepared using NETN lysis buffer. *Antibody:* Rabbit anti-HVEM/TNFRSF14 recombinant monoclonal antibody [BLR062G] (A700-062-T lot 1) used at 1:1000. *Secondary:* HRP-conjugated goat anti-rabbit IgG (A120-101P). Chemiluminescence with an exposure time of 30 seconds.