

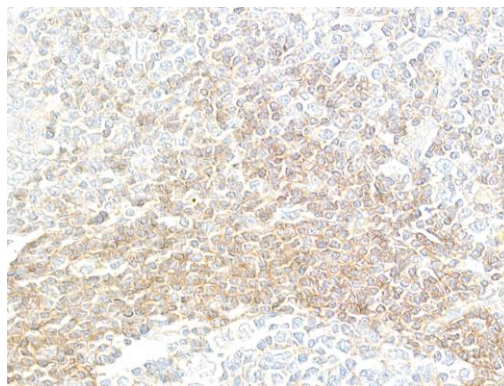
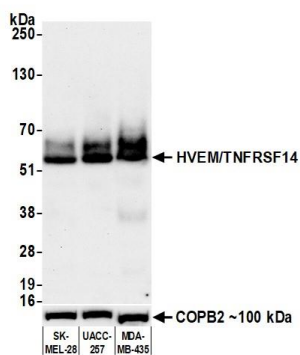
HVEM/TNFRSF14 Recombinant Monoclonal Antibody [BLR062G]

Rabbit Recombinant Monoclonal

Purified		RefSeq ID	NP_003811.2
Catalog No.	A700-062-T	Uniprot ID	Q92956
Lot No.	2	GeneID	8764

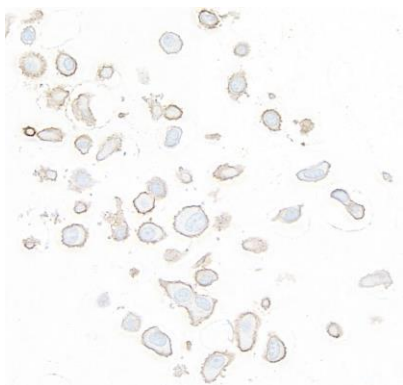
APPLICATIONS	WB, IHC, ICC
SPECIES REACTIVITY	Human
AMOUNT	10 µl (5+ tests)
CONCENTRATION	1000 µg/ml
STORAGE/SHELF LIFE	2 - 8°C / 1 year from date of receipt
PHYSICAL STATE	Liquid
BUFFER	Borate Buffered Saline (BBS) pH 8.2 with 0.09% Sodium Azide, BSA-Free
ISOTYPE	IgG
CLONE #	BLR062G
ORIGIN	USA
PRODUCTION PROCEDURES	Recombinant antibody was purified from cell culture supernatant. Immunogen was a recombinant protein representing the extracellular domain of human TNF receptor superfamily member 14, transcript variant 1 (Herpesvirus entry mediator A, HVEM) (residues 39-200, NP_003811.2).
APPLICATIONS	Centrifuge tube to remove product from lid. Optimal working dilutions should be determined experimentally by the investigator. Prepare working dilution immediately before use. Western Blot 1:1000 Immunohistochemistry 1:100 to 1:500. Epitope retrieval with citrate buffer pH6.0 is recommended for FFPE tissue sections. Immunocytochemistry 1:100 to 1:500. Epitope retrieval with citrate buffer pH6.0 is recommended for FFPE cell sections.
IHC HUMAN CONTROLS	Lung Carcinoma, Ovarian Carcinoma, Tonsil, MDA-MB-435 Cells, SK-MEL-28 Cells, UACC-257 Cells
ADDITIONAL INFO	https://www.fortislife.com/p/A700-062-T Use the link above to view SDS, a current list of citations, and other product specific information.

This document certifies that this product has met all of the quality control standards defined by Bethyl Laboratories, Inc.
Michael Spencer, PhD Date: April 19, 2023

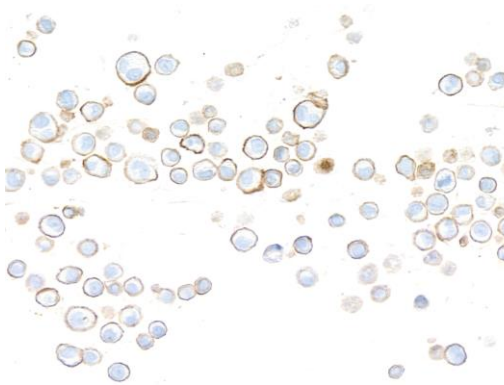


Detection of human HVEM/TNFRSF14 by western blot.
Samples: Whole cell lysate (50 µg) from SK-MEL-28, UACC-257, and MDA-MB-435 cells prepared using NETN lysis buffer. *Antibody:* Rabbit anti-HVEM/TNFRSF14 recombinant monoclonal antibody [BLR062G] (A700-062 lot 2) used at 1:1000. *Secondary:* HRP-conjugated goat anti-rabbit IgG (A120-101P). Chemiluminescence with an exposure time of 75 seconds. Lower Panel: Rabbit anti-COPB2 antibody (A304-523A).

Detection of human HVEM/TNFRSF14 by immunohistochemistry. *Sample:* FFPE section of human tonsil. *Antibody:* Rabbit anti-HVEM/TNFRSF14 recombinant monoclonal antibody [BLR062G] (A700-062-2). *Secondary:* HRP-conjugated goat anti-rabbit IgG (A120-501P).



Detection of human HVEM/TNFRSF14 by immunocytochemistry. *Sample:* FFPE section of SK-MEL-28 cells. *Antibody:* Rabbit anti-HVEM/TNFRSF14 recombinant monoclonal antibody [BLR062G] (A700-062-2). *Secondary:* HRP-conjugated goat anti-rabbit IgG (A120-501P).



Detection of human HVEM/TNFRSF14 by immunocytochemistry. *Sample:* FFPE section of MDA-MB-435 cells. *Antibody:* Rabbit anti-HVEM/TNFRSF14 recombinant monoclonal antibody [BLR062G] (A700-062-2). *Secondary:* HRP-conjugated goat anti-rabbit IgG (A120-501P).