

DNAM-1 /CD226 Recombinant Monoclonal Antibody [BLR063G]

Rabbit Recombinant Monoclonal

Purified		RefSeq ID	NP_006557.2
Catalog No.	A700-063-T	Uniprot ID	Q15762
Lot No.	A700-063-T-3	GeneID	10666

APPLICATIONS WB, IP, IHC, ICC

SPECIES REACTIVITY Human

AMOUNT 10 µl (5+ tests)

CONCENTRATION 1000 µg/ml

STORAGE/SHELF LIFE 2 – 8°C / 1 year from date of receipt

PHYSICAL STATE Liquid

BUFFER Borate Buffered Saline (BBS) pH 8.2 with 0.09% Sodium Azide, BSA Free

ISOTYPE IgG

CLONE # BLR063G

ORIGIN USA

PRODUCTION PROCEDURES Recombinant antibody was purified from cell culture supernatant.

Immunogen was a recombinant protein representing the extracellular domain of human DNAM-1 /CD226 (residues 19–229, NP_006557.2).

APPLICATIONS Centrifuge tube to remove product from lid. Optimal working dilutions should be determined experimentally by the investigator. Prepare working dilution immediately before use.

Western Blot 1:1000

Immunoprecipitation 20 µl/mg lysate

Immunohistochemistry 1:100 to 1:500. Epitope retrieval with citrate buffer pH6.0 is recommended for FFPE tissue sections.

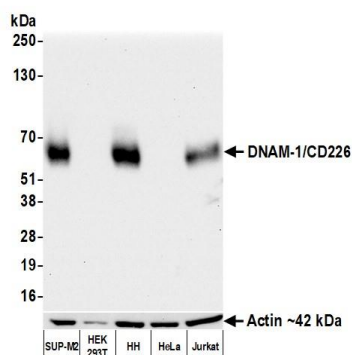
Immunocytochemistry 1:100 to 1:500. Epitope retrieval with citrate buffer pH6.0 is recommended for FFPE cell sections.

IHC HUMAN CONTROLS Colon Carcinoma, Liver Carcinoma, Lung Carcinoma, Spleen, Tonsil, HH Cells, Jurkat Cells, SUP-M2 Cells

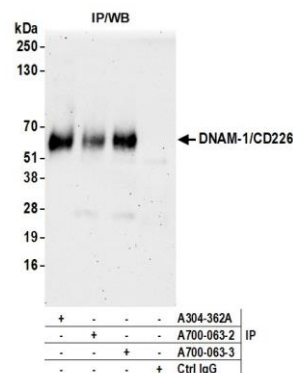
ADDITIONAL INFO <https://www.fortislife.com/p/A700-063-T>

Use the link above to view SDS, a current list of citations, and other product specific information.

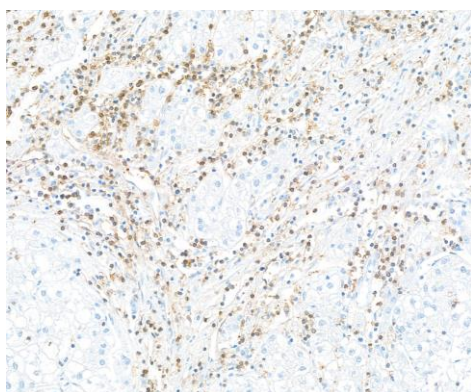
This document certifies that this product has met all of the quality control standards defined by Bethyl Laboratories, Inc.
Michael Spencer, PhD Date: August 31, 2022



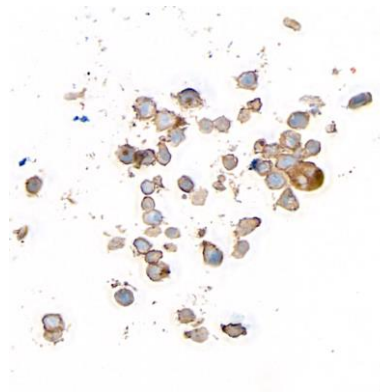
Detection of human DNAM-1/CD226 by western blot.
Samples: Whole cell lysate (10 µg) from SUP-M2, HEK293T, HH, HeLa, and Jurkat cells prepared using NETN lysis buffer. *Antibody:* Rabbit anti-DNAM-1/CD226 recombinant monoclonal antibody [BL-1060-1D2] (A700-063 lot 3) used at 1:1000. *Secondary:* HRP-conjugated goat anti-rabbit IgG (A120-101P). Chemiluminescence with an exposure time of 10 seconds. Lower Panel: Rabbit anti-Actin recombinant monoclonal antibody [BLR057F] (A700-057).



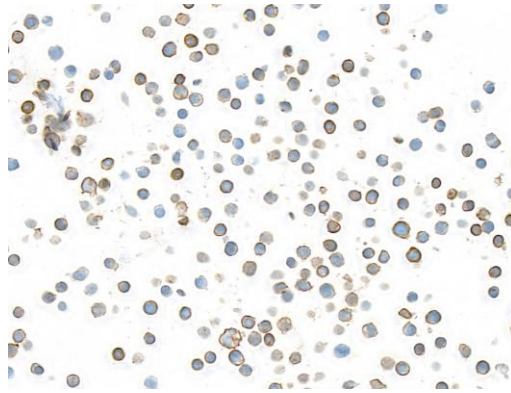
Detection of human DNAM-1/CD226 by western blot of immunoprecipitates. *Samples:* Whole cell lysate (1.0 mg per IP reaction; 20% of IP loaded) from HH cells prepared using NETN lysis buffer. *Antibodies:* Rabbit anti-DNAM-1/CD226 recombinant monoclonal antibody [BL-1060-1D2] (A700-063 lot 3) used for IP at 6 µl/mg lysate. DNAM-1/CD226 was also immunoprecipitated by a previous lot of this antibody (A700-063 lot 2) and a second antibody against a different epitope of DNAM-1/CD226 (A304-362A). For blotting immunoprecipitated DNAM-1/CD226, A700-063 was used at 1:1000. Chemiluminescence with an exposure time of



Detection of human DNAM-1 in FFPE liver carcinoma by IHC. *Antibody:* Rabbit anti-DNAM-1 recombinant monoclonal antibody [BLR063G] (A700-063). *Secondary:* HRP-conjugated goat anti-rabbit IgG (A120-501P). *Substrate:* DAB.



Detection of human DNAM-1 in FFPE HH cells by ICC. *Antibody:* Rabbit anti-DNAM-1 recombinant monoclonal antibody [BLR063G] (A700-063). *Secondary:* HRP-conjugated goat anti-rabbit IgG (A120-501P). *Substrate:* DAB.

**Detection of human DNAM-1 in FFPE Jurkat cells by ICC.**

Antibody: Rabbit anti-DNAM-1 recombinant monoclonal antibody [BLR063G] (A700-063). *Secondary:* HRP-conjugated goat anti-rabbit IgG (A120-501P). *Substrate:* DAB.