

CHD4 Recombinant Monoclonal Antibody [BLR066G]

Rabbit Recombinant Monoclonal

Purified Protein ID NP_001264.2
Catalog No. A700-066-T GeneID 1108
Lot No. A700-066-T-1



APPLICATIONS WB, IP
SPECIES REACTIVITY Human, Mouse
AMOUNT 20 µl (2 blots)
CONCENTRATION 40 µg/ml
STORAGE/SHELF LIFE 2 – 8° C / 1 year from date of receipt
PHYSICAL STATE Liquid
BUFFER Borate Buffered Saline (BBS) pH 8.2 with 0.1% BSA and 0.09% Sodium Azide
ISOTYPE IgG
CLONE # BLR066G
ORIGIN USA
PRODUCTION PROCEDURES Recombinant antibody was purified from cell culture supernatant.

Immunogen was a peptide representing a region between residue 25 and 75 of human Chromodomain-helicase-DNA-binding protein 4 using the numbering given in entry NP_001264.2 (Gene ID 1108).

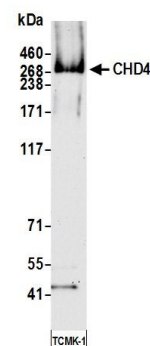
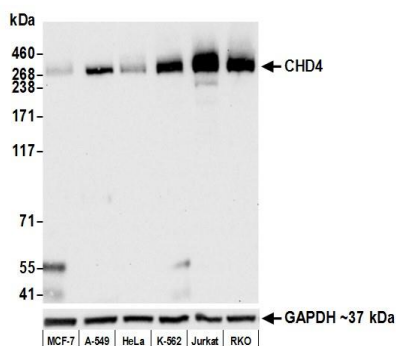
APPLICATIONS Centrifuge tube to remove product from lid. Optimal working dilutions should be determined experimentally by the investigator. Prepare working dilution immediately before use.

Western Blot 1:1000
Immunoprecipitation 20 µl/1 mg lysate

ADDITIONAL INFO <https://www.bethyl.com/product/A700-066-T>

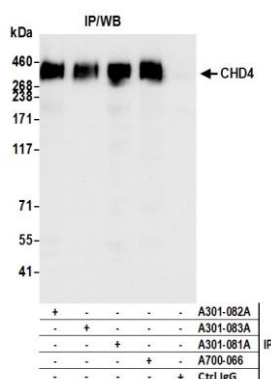
Use the link above to view SDS, a current list of citations, and other product specific information.

This document certifies that this product has met all of the quality control standards defined by Bethyl Laboratories, Inc.
Eric McIntush, PhD | Chief Scientific Officer Date: June 21, 2019



Detection of human CHD4 by western blot. Samples: Whole cell lysate (50 µg) from MCF-7, A-549, HeLa, K-562, Jurkat, and RKO cells prepared using NETN lysis buffer. **Antibody:** Rabbit anti-CHD4 recombinant monoclonal antibody [BLR066G] (A700-066-T lot 1) used at 1:1000. **Secondary:** HRP-conjugated goat anti-rabbit IgG (A120-101P). Chemiluminescence with an exposure time of 10 seconds. Lower Panel: Rabbit anti-GAPDH (A300-639A).

Detection of mouse CHD4 by western blot. Samples: Whole cell lysate (50 µg) from TCMK-1 cells prepared using NETN lysis buffer. **Antibody:** Rabbit anti-CHD4 recombinant monoclonal antibody [BLR066G] (A700-066-T lot 1) used at 1:1000. **Secondary:** HRP-conjugated goat anti-rabbit IgG (A120-101P). Chemiluminescence with an exposure time of 75 seconds.



Detection of human CHD4 by western blot of immunoprecipitates. Samples: Whole cell lysate (1.0 mg per IP reaction; 20% of IP loaded) from HEK293T cells. **Antibodies:** Rabbit anti-CHD4 recombinant monoclonal antibody [BLR066G] (A700-066-T lot 1) used for IP at 20 µl/mg lysate. CHD4 was also immunoprecipitated by a rabbit anti-CHD4 antibodies (A301-081A, A301-082A, A301-083A). For blotting immunoprecipitated CHD4, A700-066-T was used at 1:1000. Chemiluminescence with an exposure time of 1 second.