

MafA Recombinant Monoclonal Antibody [BLR067G]

Rabbit Recombinant Monoclonal

Purified		RefSeq ID	NP_963883.2
Catalog No.	A700-067-T	Uniprot ID	Q8NHW3
Lot No.	A700-067-T-4	GeneID	389692

APPLICATIONS	WB, IHC, ICC, IHC-IF
SPECIES REACTIVITY	Human, Mouse
AMOUNT	10 µl (5+ tests)
CONCENTRATION	1000 µg/ml
STORAGE/SHELF LIFE	2 – 8°C / 1 year from date of receipt
PHYSICAL STATE	Liquid
BUFFER	Borate Buffered Saline (BBS) pH 8.2 with 0.09% Sodium Azide, BSA Free
ISOTYPE	IgG
CLONE #	BLR067G
ORIGIN	USA

PRODUCTION PROCEDURES Recombinant antibody was purified from cell culture supernatant.
Immunogen was a peptide representing a region between residue 125 and 175 of human MAF bZIP transcription factor A using the numbering given in entry NP_963883.2 (Gene ID 389692).

APPLICATIONS Centrifuge tube to remove product from lid. Optimal working dilutions should be determined experimentally by the investigator. Prepare working dilution immediately before use.

Western Blot	1:1000
Immunohistochemistry	1:100 to 1:500. Epitope retrieval with citrate buffer pH6.0 is recommended for FFPE tissue sections. Zinc-fixative (JB fix) is recommended to enhance staining.
Immunocytochemistry	1:100 to 1:500. Epitope retrieval with citrate buffer pH6.0 is recommended for FFPE cell sections.
Immunofluorescence (IHC)	1:100 to 1:500. Epitope retrieval with citrate buffer pH6.0 is recommended for FFPE tissue sections. Zinc-fixative (JB fix) is recommended to enhance staining.

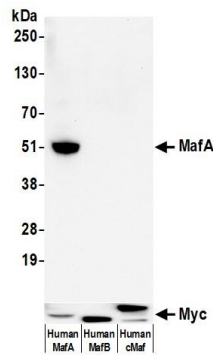
IHC HUMAN CONTROLS Pancreas, Pancreatic Tumor

IHC MOUSE CONTROLS Pancreas, Beta-TC-6 Cells

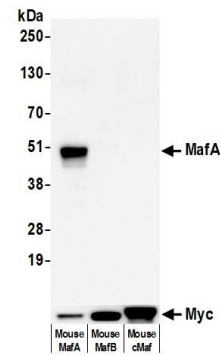
ADDITIONAL INFO <https://www.fortislife.com/p/A700-067-T>

Use the link above to view SDS, a current list of citations, and other product specific information.

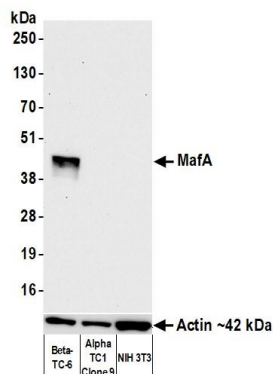
This document certifies that this product has met all of the quality control standards defined by Bethyl Laboratories, Inc.
Michael Spencer, PhD Date: November 15, 2022



Detection of human MafA by western blot. *Samples:* Whole cell lysate (10 µg) from HEK293T transfected with myc tagged Human MafA, Human MafB, and Human cMaf prepared using NETN lysis buffer. *Antibody:* Rabbit anti-MafA recombinant monoclonal antibody [BLR067G] (A700-067 lot 4) used at 1:1000. *Secondary:* HRP-conjugated goat anti-rabbit IgG (A120-101P). Chemiluminescence with an exposure time of 30 seconds. Lower Panel: Rabbit recombinant monoclonal antibody to Myc-tag (A191-101).



Detection of mouse MafA by western blot. *Samples:* Whole cell lysate (10 µg) from HEK293T transfected with myc tagged mouse MafA, Human MafB, and Human cMaf prepared using NETN lysis buffer. *Antibody:* Rabbit anti-MafA recombinant monoclonal antibody [BLR067G] (A700-067 lot 4) used at 1:1000. *Secondary:* HRP-conjugated goat anti-rabbit IgG (A120-101P). Chemiluminescence with an exposure time of 30 seconds. Lower Panel: Rabbit recombinant monoclonal antibody to Myc-tag (A191-101).



Detection of mouse MafA by western blot. *Samples:* Whole cell lysate (10 µg) from Beta-TC-6, AlphaTC1 Clone 9, and NIH 3T3 cells prepared using NETN lysis buffer. *Antibody:* Rabbit anti-MafA recombinant monoclonal antibody [BLR067G] (A700-067 lot 4) used at 1:1000. *Secondary:* HRP-conjugated goat anti-rabbit IgG (A120-101P). Chemiluminescence with an exposure time of 10 seconds. Lower Panel: Rabbit anti-Actin recombinant monoclonal antibody [BLR057F] (A700-057).

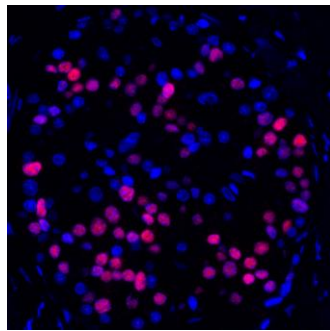
Detection of human MafA by immunohistochemistry. *Sample:* FFPE section of human pancreatic tumor. *Antibody:* Rabbit anti-MafA recombinant monoclonal antibody [BLR067G] (A700-067 lot 4). *Secondary:* HRP-conjugated goat anti-rabbit IgG (A120-501P).

Detection of mouse MafA by immunohistochemistry.

Sample: FFPE section of mouse pancreas (JB fixation).
Antibody: Rabbit anti-MafA recombinant monoclonal antibody [BLR067G] (A700-067 lot 4). *Secondary:* HRP-conjugated goat anti-rabbit IgG (A120-501P).

Detection of mouse MafA by immunohistochemistry.

Sample: FFPE section of mouseBeta-TC-6 cells. *Antibody:* Rabbit anti-MafA recombinant monoclonal antibody [BLR067G] (A700-067 lot 4). *Secondary:* HRP-conjugated goat anti-rabbit IgG (A120-501P).



Detection of human MafA (red) by immunohistochemistry. *Sample:* FFPE section of human pancreatic carcinoma. *Antibody:* Rabbit anti-MafA recombinant monoclonal antibody [BLR067G] (A700-067 lot 1) used at 1:250. *Secondary:* HRP-conjugated goat anti-rabbit IgG (A120-501P). *Substrate:* Opal™. *Counterstain:* DAPI (blue).