

# GITR/TNFRSF18 Recombinant Monoclonal Antibody [BLR068G]

Rabbit Recombinant Monoclonal

Purified Protein ID NP\_004186.1  
Catalog No. A700-068-T GeneID 8784  
Lot No. A700-068-T-1



<b>APPLICATIONS</b>	WB, IP, IHC, ICC, IHC-IF
<b>SPECIES REACTIVITY</b>	Human
<b>AMOUNT</b>	10 µl (5+ tests)
<b>CONCENTRATION</b>	1000 µg/ml
<b>STORAGE/SHELF LIFE</b>	2 – 8° C / 1 year from date of receipt
<b>PHYSICAL STATE</b>	Liquid
<b>BUFFER</b>	Borate Buffered Saline (BBS) pH 8.2 with 0.09% Sodium Azide, BSA Free
<b>ISOTYPE</b>	IgG
<b>CLONE #</b>	BLR068G
<b>ORIGIN</b>	USA
<b>PRODUCTION PROCEDURES</b>	Recombinant antibody was purified from cell culture supernatant.

Immunogen was a peptide representing a region between residue 191 and the C-terminus (residue 241) of human Tumor necrosis factor receptor superfamily member 18 (GITR) using the numbering given in entry NP\_004186.1 (Gene ID 8784).

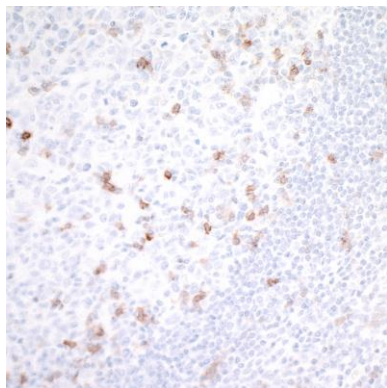
**APPLICATIONS** Centrifuge tube to remove product from lid. Optimal working dilutions should be determined experimentally by the investigator. Prepare working dilution immediately before use.

Western Blot	1:1000
Immunoprecipitation	6 µl/1 mg lysate
Immunohistochemistry	1:100 to 1:500. Epitope retrieval with citrate buffer pH6.0 is recommended for FFPE tissue sections.
Immunocytochemistry	1:100 to 1:500. Epitope retrieval with citrate buffer pH6.0 is recommended for FFPE cell sections.
Immunofluorescence (IHC)	1:100 to 1:500. Epitope retrieval with citrate buffer pH6.0 is recommended for FFPE tissue sections.

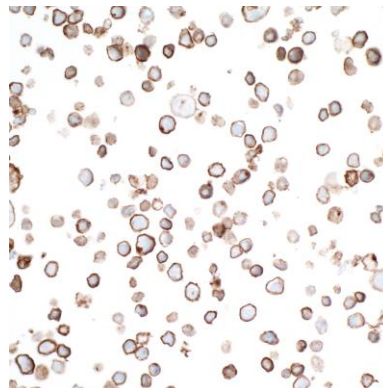
**IHC HUMAN CONTROLS** Tonsil, MJ Cells, RPMI-8226 Cells

**ADDITIONAL INFO** <https://www.bethyl.com/product/A700-068-T>  
Use the link above to view SDS, a current list of citations, and other product specific information.

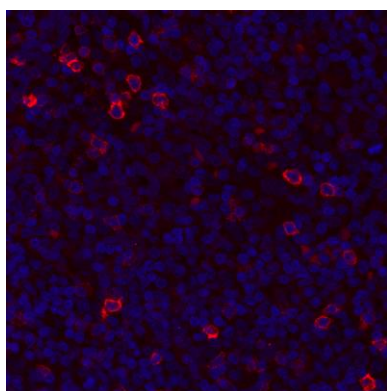
This document certifies that this product has met all of the quality control standards defined by Bethyl Laboratories, Inc.  
Eric McIntush, PhD | Chief Scientific Officer Date: January 24, 2020



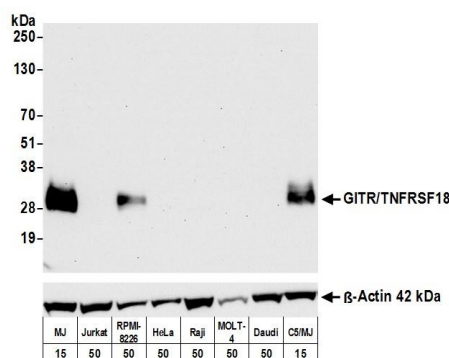
**Detection of human GITR/TNFRSF18 by immunohistochemistry.** *Sample:* FFPE section of tonsil. *Antibody:* Rabbit anti-GITR/TNFRSF18 recombinant monoclonal antibody [BLR068G] (A700-068-T lot 1) used at 1:125. *Secondary:* HRP-conjugated goat anti-rabbit IgG (A120-501P). *Substrate:* DAB.



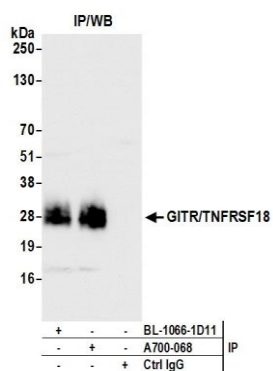
**Detection of human GITR/TNFRSF18 by immunocytochemistry.** *Sample:* FFPE section of RPMI-8226 cells. *Antibody:* Rabbit anti-GITR/TNFRSF18 recombinant monoclonal antibody [BLR068G] (A700-068-T lot 1) used at 1:125. *Secondary:* HRP-conjugated goat anti-rabbit IgG (A120-501P). *Substrate:* DAB.



**Detection of human GITR/TNFRSF18 by immunohistochemistry.** *Sample:* FFPE section of human tonsil. *Antibody:* Rabbit anti-GITR/TNFRSF18 recombinant monoclonal antibody [BLR068G] (A700-068-T lot 1) used at 1:200. *Secondary:* DyLight® 594-conjugated goat anti-rabbit IgG (A120-101D4). *Counterstain:* DAPI (blue).



**Detection of human GITR/TNFRSF18 by western blot.** *Samples:* Whole cell lysate (15 or 50 µg) from MJ, Jurkat, RPMI-8226, HeLa, Raji, MOLT-4, Daudi, and C5/MJ cells prepared using NETN lysis buffer. *Antibody:* Rabbit anti-GITR/TNFRSF18 recombinant monoclonal antibody [BLR068G] (A700-068-T lot 1) used at 1:1000. *Secondary:* HRP-conjugated goat anti-rabbit IgG (A120-101P). Chemiluminescence with an exposure time of 30 seconds. Lower Panel: Rabbit anti-β-Actin recombinant monoclonal antibody [BLR057F] (A700-057).



**Detection of human GITR/TNFRSF18 by western blot of immunoprecipitates.** *Samples:* Whole cell lysate (1.0 mg per IP reaction; 20% of IP loaded) from MJ cells prepared using NETN lysis buffer. *Antibodies:* Rabbit anti-GITR/TNFRSF18 recombinant monoclonal antibody [BLR068G] (A700-068-T lot 1) used for IP at 6  $\mu$ l per reaction. GITR/TNFRSF18 was also immunoprecipitated by rabbit anti-GITR/TNFRSF18 recombinant monoclonal antibody [BL-1066-1D11]. For blotting immunoprecipitated GITR/TNFRSF18, A700-068-T was used at 1:1000. Chemiluminescence with an exposure time of 3 seconds.