

# TFEB Recombinant Monoclonal Antibody [BLR070G]

Rabbit Recombinant Monoclonal

Purified		Protein ID	NP_009093.1
Catalog No.	A700-070-T	GeneID	7942
Lot No.	A700-070-T-2		

---

<b>APPLICATIONS</b>	WB, IP
<b>SPECIES REACTIVITY</b>	Human, Mouse
<b>AMOUNT</b>	20 µl (2 blots)
<b>CONCENTRATION</b>	100 µg/ml
<b>STORAGE/SHELF LIFE</b>	2 – 8°C / 1 year from date of receipt
<b>PHYSICAL STATE</b>	Liquid
<b>BUFFER</b>	Borate Buffered Saline (BBS) pH 8.2 with 0.1% BSA and 0.09% Sodium Azide
<b>ISOTYPE</b>	IgG
<b>CLONE #</b>	BLR070G
<b>ORIGIN</b>	USA
<b>PRODUCTION PROCEDURES</b>	Recombinant antibody was purified from cell culture supernatant.

Immunogen was a peptide representing a region between residue 426 and the C-terminus (residue 476) of human Transcription factor EB using the numbering given in entry NP\_009093.1 (Gene ID 7942).

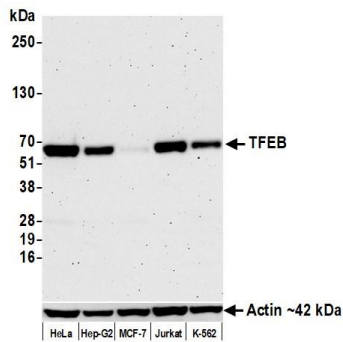
**APPLICATIONS** Centrifuge tube to remove product from lid. Optimal working dilutions should be determined experimentally by the investigator. Prepare working dilution immediately before use.

Western Blot	1:1000
Immunoprecipitation	20 µl/1 mg lysate

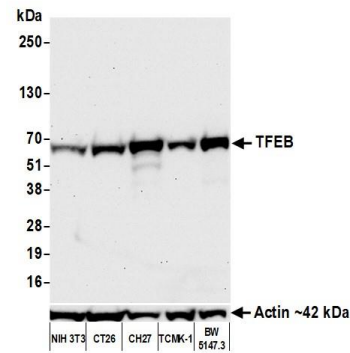
**ADDITIONAL INFO** <https://www.bethyl.com/product/A700-070-T>

Use the link above to view SDS, a current list of citations, and other product specific information.

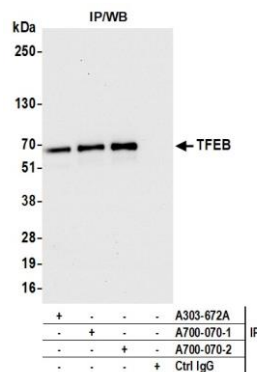
This document certifies that this product has met all of the quality control standards defined by Bethyl Laboratories, Inc.  
Michael Spencer, PhD Date: October 27, 2021



**Detection of human TFEB by western blot.** *Samples:* Whole cell lysate (50  $\mu$ g) from HeLa, Hep-G2, MCF-7, Jurkat, and K-562 cells prepared using NETN lysis buffer. *Antibody:* Rabbit anti-TFEB recombinant monoclonal antibody [BLR070G] (A700-070-T lot 2) used at 1:1000. *Secondary:* HRP-conjugated goat anti-rabbit IgG (A120-101P). Chemiluminescence with an exposure time of 3 minutes. Lower Panel: Rabbit anti-Actin recombinant monoclonal antibody [BLR057F] (A700-057).



**Detection of mouse TFEB by western blot.** *Samples:* Whole cell lysate (50  $\mu$ g) from NIH 3T3, CT26, CH27, TCMK-1, and BW5147.3 cells prepared using NETN lysis buffer. *Antibody:* Rabbit anti-TFEB recombinant monoclonal antibody [BLR070G] (A700-070-T lot 2) used at 1:1000. *Secondary:* HRP-conjugated goat anti-rabbit IgG (A120-101P). Chemiluminescence with an exposure time of 30 seconds. Lower Panel: Rabbit anti-Actin recombinant monoclonal antibody [BLR057F] (A700-057).



**Detection of human TFEB by western blot of immunoprecipitates.** *Samples:* Whole cell lysate (1.0 mg per IP reaction; 20% of IP loaded) from HeLa cells prepared using NETN lysis buffer. *Antibodies:* Rabbit anti-TFEB recombinant monoclonal antibody [BLR070G] (A700-070-T lot 2) used for IP at 20  $\mu$ l/mg lysate. TFEB was also immunoprecipitated by a previous lot of this antibody (A700-070-T lot 1) and a second antibody against a different epitope of TFEB (A303-672A). For blotting immunoprecipitated TFEB, A700-070 was used at 1:1000. Chemiluminescence with an exposure time of 10 seconds.