

Nectin-2/CD112 Recombinant Monoclonal Antibody [BLR071G]

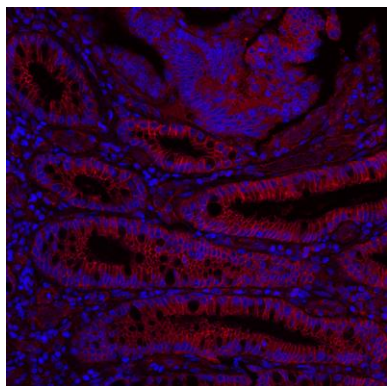
Rabbit Recombinant Monoclonal

Purified Protein ID NP_001036189.1
Catalog No. A700-071-T GeneID 5819
Lot No. A700-071-T-1

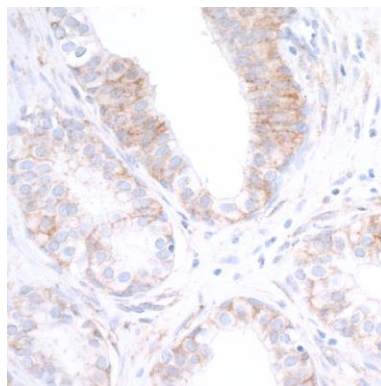


APPLICATIONS	WB, IHC, ICC, IHC-IF
SPECIES REACTIVITY	Human
AMOUNT	10 µl (5+ tests)
CONCENTRATION	1000 µg/ml
STORAGE/SHELF LIFE	2 - 8° C / 1 year from date of receipt
PHYSICAL STATE	Liquid
BUFFER	Borate Buffered Saline (BBS) pH 8.2 with 0.09% Sodium Azide, BSA Free
ISOTYPE	IgG
CLONE #	BLR071G
ORIGIN	USA
PRODUCTION PROCEDURES	Recombinant antibody was purified from cell culture supernatant. Immunogen was a peptide representing a region between residue 50 and 100 of human Nectin cell adhesion molecule 2 using the numbering given in entry NP_001036189.1 (Gene ID 5819).
APPLICATIONS	Centrifuge tube to remove product from lid. Optimal working dilutions should be determined experimentally by the investigator. Prepare working dilution immediately before use. Western Blot 1:1000 Immunohistochemistry 1:100 to 1:500. Epitope retrieval with citrate buffer pH6.0 is recommended for FFPE tissue sections. Immunocytochemistry 1:100 to 1:500. Epitope retrieval with citrate buffer pH6.0 is recommended for FFPE cell sections. Immunofluorescence (IHC) 1:100 to 1:500. Epitope retrieval with citrate buffer pH6.0 is recommended for FFPE tissue sections.
IHC HUMAN CONTROLS	Breast Carcinoma, Colon Carcinoma, Liver Carcinoma, Lung Carcinoma, Prostate Carcinoma, Testicular Seminoma, BeWo Cells, HEK293T Cells, OVCAR-4 Cells, OVCAR-8 Cells
ADDITIONAL INFO	https://www.bethyl.com/product/A700-071-T Use the link above to view SDS, a current list of citations, and other product specific information.

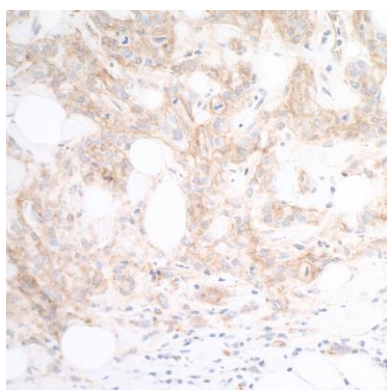
This document certifies that this product has met all of the quality control standards defined by Bethyl Laboratories, Inc.
Eric McIntush, PhD | Chief Scientific Officer Date: February 11, 2020



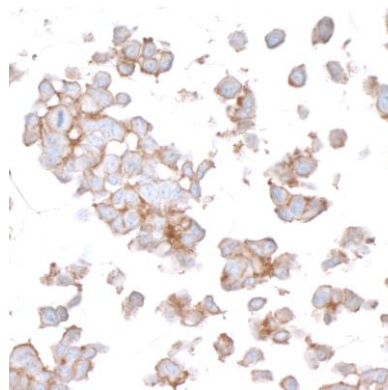
Detection of human Nectin-2/CD112 by immunohistochemistry. *Sample:* FFPE section of human colon carcinoma. *Antibody:* Rabbit anti-Nectin-2/CD112 recombinant monoclonal antibody [BLR071G] (A700-071-T lot 1) used at 1:200. *Secondary:* DyLight® 594-conjugated goat anti-rabbit IgG (A120-101D4). *Counterstain:* DAPI (blue).



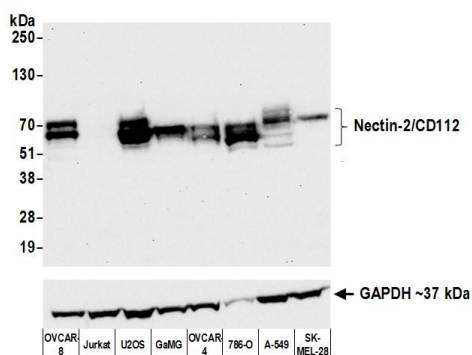
Detection of human Nectin-2/CD112 by immunohistochemistry. *Sample:* FFPE section of prostate carcinoma. *Antibody:* Rabbit anti-Nectin-2/CD112 recombinant monoclonal antibody [BLR071G] (A700-071-T lot 1) used at 1:200. *Secondary:* HRP-conjugated goat anti-rabbit IgG (A120-501P). *Substrate:* DAB.



Detection of human Nectin-2/CD112 by immunohistochemistry. *Sample:* FFPE section of breast carcinoma. *Antibody:* Rabbit anti-Nectin-2/CD112 recombinant monoclonal antibody [BLR071G] (A700-071-T lot 1) used at 1:200. *Secondary:* HRP-conjugated goat anti-rabbit IgG (A120-501P). *Substrate:* DAB.

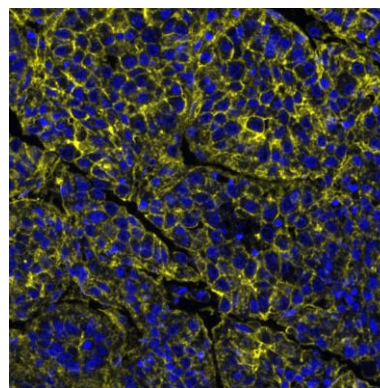


Detection of human Nectin-2/CD112 by immunocytochemistry. *Sample:* FFPE section of OVCAR-8 cells. *Antibody:* Rabbit anti-Nectin-2/CD112 recombinant monoclonal antibody [BLR071G] (A700-071-T lot 1) used at 1:200. *Secondary:* HRP-conjugated goat anti-rabbit IgG (A120-501P). *Substrate:* DAB.



Detection of human Nectin-2/CD112 by western blot.

Samples: Whole cell lysate (50 µg) from OVCAR-8, Jurkat, U2OS, GaMG, OVCAR-4, 786-O, A-549, and SK-MEL-28 cells prepared using NETN lysis buffer. *Antibody:* Rabbit anti-Nectin-2/CD112 recombinant monoclonal antibody [BLR071G] (A700-071-T lot 1) used at 1:1000. *Secondary:* HRP-conjugated goat anti-rabbit IgG (A120-101P). Chemiluminescence with an exposure time of 30 seconds. Lower panel: Rabbit anti-GAPDH (A300-639A).



Detection of human Nectin-2/CD112 in FFPE hepatic carcinoma by IHC-IF.

Antibody: Rabbit anti-Nectin-2/CD112 recombinant monoclonal antibody [BLR071G] (A700-071-T Lot 1). *Secondary:* HRP-conjugated goat anti-rabbit IgG (A120-501P). *Substrate:* Opal™. Counterstain: DAPI.