

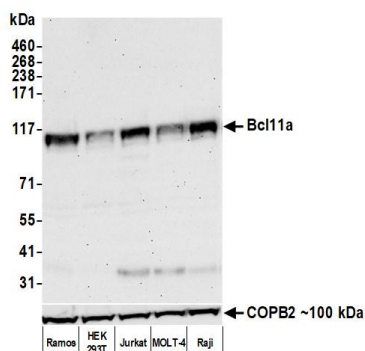
Bcl11a Recombinant Monoclonal Antibody [BLR073G]

Rabbit Recombinant Monoclonal

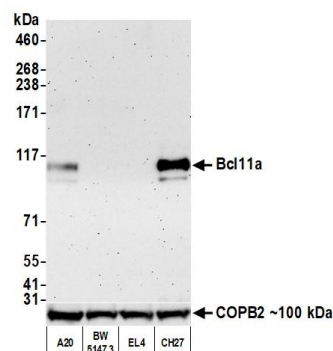
Purified Protein ID NP_075044.2
Catalog No. A700-073-T GeneID 53335
Lot No. A700-073-T-2

APPLICATIONS	WB, IP, F
SPECIES REACTIVITY	Human, Mouse
AMOUNT	20 µl (2 blots)
CONCENTRATION	1000 µg/ml
STORAGE/SHELF LIFE	2 - 8°C / 1 year from date of receipt
PHYSICAL STATE	Liquid
BUFFER	Borate Buffered Saline (BBS) pH 8.2 with 0.09% Sodium Azide, BSA Free
ISOTYPE	IgG
CLONE #	BLR073G
ORIGIN	USA
PRODUCTION PROCEDURES	Recombinant antibody was purified from cell culture supernatant. Immunogen was a peptide representing a region between residue 1 and 50 of human B cell CLL/lymphoma 11A using the numbering given in entry NP_075044.2 (Gene ID 53335).
APPLICATIONS	Centrifuge tube to remove product from lid. Optimal working dilutions should be determined experimentally by the investigator. Prepare working dilution immediately before use. Western Blot 1:1000 Immunoprecipitation 20 µl/1 mg lysate Flow Cytometry Fixed and permeabilized cells were stained with 0.2 µl per 1 x 10 ⁶ cells.
ADDITIONAL INFO	https://www.bethyl.com/product/A700-073-T Use the link above to view SDS, a current list of citations, and other product specific information.

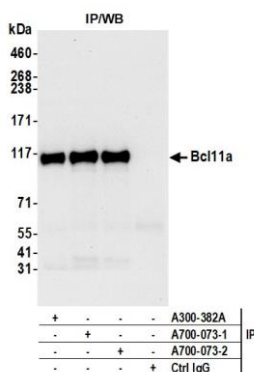
This document certifies that this product has met all of the quality control standards defined by Bethyl Laboratories, Inc.
Michael Spencer, PhD Date: October 26, 2021



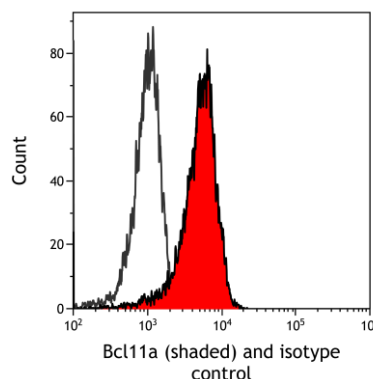
Detection of human Bcl11a by western blot. *Samples:* Whole cell lysate (50 µg) from Ramos, HEK293T, Jurkat, MOLT-4, and Raji cells prepared using NETN lysis buffer. *Antibody:* Rabbit anti-Bcl11a recombinant monoclonal antibody [BLR073G] (A700-073-T lot 2) used at 1:1000. *Secondary:* HRP-conjugated goat anti-rabbit IgG (A120-101P). Chemiluminescence with an exposure time of 75 seconds. Lower Panel: Rabbit anti-COPB2 antibody (A304-523A).



Detection of human Bcl11a by western blot. *Samples:* Whole cell lysate (50 µg) from A20, BW5147.3, EL4, and CH27 cells prepared using NETN lysis buffer. *Antibody:* Rabbit anti-Bcl11a recombinant monoclonal antibody [BLR073G] (A700-073-T lot 2) used at 1:1000. *Secondary:* HRP-conjugated goat anti-rabbit IgG (A120-101P). Chemiluminescence with an exposure time of 3 minutes. Lower Panel: Rabbit anti-COPB2 antibody (A304-523A).



Detection of human Bcl11a by western blot of immunoprecipitates. *Samples:* Whole cell lysate (1.0 mg per IP reaction; 20% of IP loaded) from Ramos cells prepared using NETN lysis buffer. *Antibodies:* Rabbit anti-Bcl11a recombinant monoclonal antibody [BLR073G] (A700-073-T lot 2) used for IP at 20 µl/mg lysate. Bcl11a was also immunoprecipitated by a previous lot of this antibody (A700-073-T lot 1) and a second antibody against a different epitope of Bcl11a (A300-382A). For blotting immunoprecipitated Bcl11a, A700-073-T was used at 1:1000. Chemiluminescence with an exposure time of 10 seconds.



Detection of human Bcl11a (shaded) in Jurkat cells by flow cytometry. *Antibody:* Rabbit anti-Bcl11a recombinant monoclonal [BLR073G] (A700-073-T lot 1) or isotype control (unshaded). *Secondary:* DyLight® 488-conjugated goat anti-rabbit IgG (A120-101D2).