

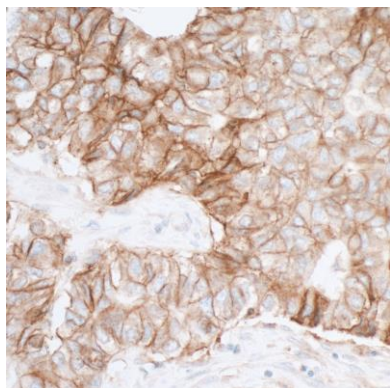
PVR/CD155 Recombinant Monoclonal Antibody [BLR074G]

Rabbit Recombinant Monoclonal

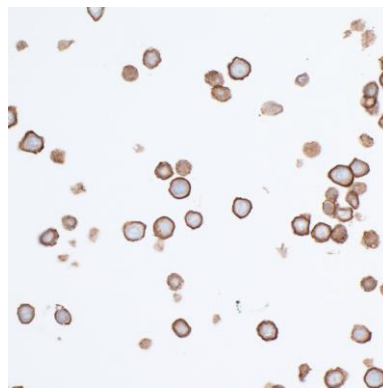
Purified		RefSeq ID	NP_006496.4
Catalog No.	A700-074	Uniprot ID	P15151
Lot No.	A700-074-1	GeneID	5817

APPLICATIONS	WB, IHC, ICC, IHC-IF, Flow Cyt
SPECIES REACTIVITY	Human
AMOUNT	100 µl (50+ tests)
CONCENTRATION	100 µg/ml
STORAGE/SHELF LIFE	2 – 8°C / 1 year from date of receipt
PHYSICAL STATE	Liquid
BUFFER	Borate Buffered Saline (BBS) pH 8.2 with 0.1% BSA and 0.09% Sodium Azide
ISOTYPE	IgG
CLONE #	BLR074G
ORIGIN	USA
PRODUCTION PROCEDURES	Recombinant antibody was purified from cell culture supernatant. Immunogen was a recombinant protein representing the extracellular domain of human PVR/CD155 (residues 28–329, NP_006496.4).
APPLICATIONS	Centrifuge tube to remove product from lid. Optimal working dilutions should be determined experimentally by the investigator. Prepare working dilution immediately before use. Western Blot 1:1,000 Immunohistochemistry 1:100 to 1:500. Epitope retrieval with citrate buffer pH6.0 is recommended for FFPE tissue sections. Immunocytochemistry 1:100 to 1:500. Epitope retrieval with citrate buffer pH6.0 is recommended for FFPE cell sections. Immunofluorescence (IHC) 1:100 to 1:500. Epitope retrieval with citrate buffer pH6.0 is recommended for FFPE tissue sections. Flow Cytometry Fixed in 4% formaldehyde and permeabilized with 90% methanol. 2 µl per 1 × 10 ⁶ cells.
IHC HUMAN CONTROLS	Breast Carcinoma, Liver Carcinoma, Lung Carcinoma, HeLa Cells, HT-29 Cells
ADDITIONAL INFO	https://www.fortislife.com/p/A700-074 Use the link above to view SDS, a current list of citations, and other product specific information.

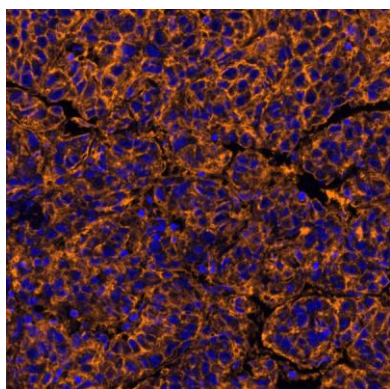
This document certifies that this product has met all of the quality control standards defined by Bethyl Laboratories, Inc.
Michael Spencer, PhD Date: November 15, 2022



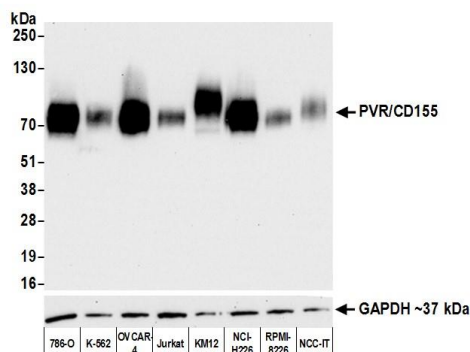
Detection of human PVR/CD155 by immunohistochemistry. *Sample:* FFPE section of lung carcinoma. *Antibody:* Rabbit anti-PVR/CD155 recombinant monoclonal antibody [BLR074G] (A700-074 lot 1) used at 1:100. *Secondary:* HRP-conjugated goat anti-rabbit IgG (A120-501P). *Substrate:* DAB.



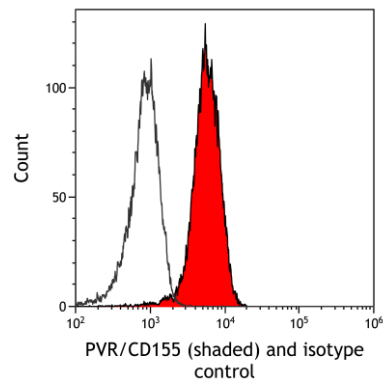
Detection of human PVR/CD155 by immunocytochemistry. *Sample:* FFPE section of HT29 cells. *Antibody:* Rabbit anti-PVR/CD155 recombinant monoclonal antibody [BLR074G] (A700-074 lot 1) used at 1:100. *Secondary:* HRP-conjugated goat anti-rabbit IgG (A120-501P). *Substrate:* DAB.



Detection of human PVR/CD155 in FFPE hepatic carcinoma by IHC-IF. *Antibody:* Rabbit anti-PVR/CD155 recombinant monoclonal antibody [BLR074G] (A700-074 Lot 1). *Secondary:* HRP-conjugated goat anti-rabbit IgG (A120-501P). *Substrate:* Opal™. Counterstain: DAPI.



Detection of human PVR/CD155 by western blot. *Samples:* Whole cell lysate (10 µg) from 786-O, K-562, OVCAR-4, Jurkat, KM12, NCI-H226, RPMI-8226, and NCC-IT cells prepared using NETN lysis buffer. *Antibody:* Rabbit anti-PVR/CD155 recombinant monoclonal antibody [BLR074G] (A700-074 lot 1) used at 1:1000. *Secondary:* HRP-conjugated goat anti-rabbit IgG (A120-101P). Chemiluminescence with an exposure time of 10 seconds. Lower Panel: Rabbit anti-GAPDH (A300-639A).



Detection of human PVR/CD155 (shaded) in Jurkat cells by flow cytometry. *Antibody:* Rabbit anti-PVR/CD155 recombinant monoclonal antibody [BLR074G] (A700-074) or isotype control (unshaded). *Secondary:* DyLight® 488-conjugated goat anti-rabbit IgG (A120-101D2).