

# PVR/CD155 Recombinant Monoclonal Antibody [BLR074G]

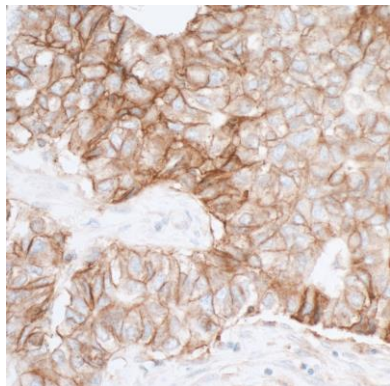
Rabbit Recombinant Monoclonal

Purified		RefSeq ID	NP_006496.4
Catalog No.	A700-074-T	Uniprot ID	P15151
Lot No.	A700-074-T-1	GeneID	5817

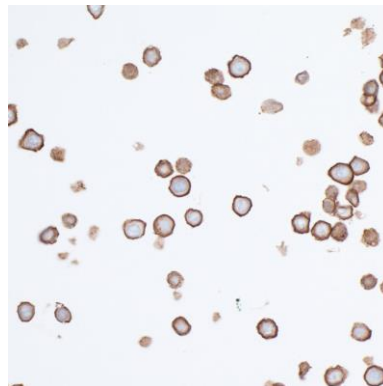
---

<b>APPLICATIONS</b>	WB, IHC, ICC, IHC-IF, Flow Cyt
<b>SPECIES REACTIVITY</b>	Human
<b>AMOUNT</b>	10 µl (5+ tests)
<b>CONCENTRATION</b>	100 µg/ml
<b>STORAGE/SHELF LIFE</b>	2 – 8°C / 1 year from date of receipt
<b>PHYSICAL STATE</b>	Liquid
<b>BUFFER</b>	Borate Buffered Saline (BBS) pH 8.2 with 0.1% BSA and 0.09% Sodium Azide
<b>ISOTYPE</b>	IgG
<b>CLONE #</b>	BLR074G
<b>ORIGIN</b>	USA
<b>PRODUCTION PROCEDURES</b>	Recombinant antibody was purified from cell culture supernatant.  Immunogen was a recombinant protein representing the extracellular domain of human PVR/CD155 (residues 28–329, NP_006496.4).
<b>APPLICATIONS</b>	Centrifuge tube to remove product from lid. Optimal working dilutions should be determined experimentally by the investigator. Prepare working dilution immediately before use.  Western Blot                      1:1,000  Immunohistochemistry      1:100 to 1:500. Epitope retrieval with citrate buffer pH6.0 is recommended for FFPE tissue sections.  Immunocytochemistry      1:100 to 1:500. Epitope retrieval with citrate buffer pH6.0 is recommended for FFPE cell sections.  Immunofluorescence (IHC)      1:100 to 1:500. Epitope retrieval with citrate buffer pH6.0 is recommended for FFPE tissue sections.  Flow Cytometry              Fixed in 4% formaldehyde and permeabilized with 90% methanol. 2 ul per 1 × 10 <sup>6</sup> cells.
<b>IHC HUMAN CONTROLS</b>	Breast Carcinoma, Liver Carcinoma, Lung Carcinoma, HeLa Cells, HT-29 Cells
<b>ADDITIONAL INFO</b>	<a href="https://www.fortislife.com/p/A700-074-T">https://www.fortislife.com/p/A700-074-T</a> Use the link above to view SDS, a current list of citations, and other product specific information.

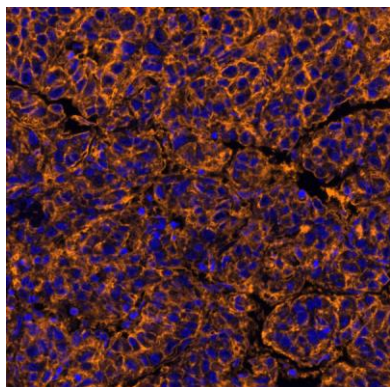
This document certifies that this product has met all of the quality control standards defined by Bethyl Laboratories, Inc.  
Michael Spencer, PhD Date: November 15, 2022



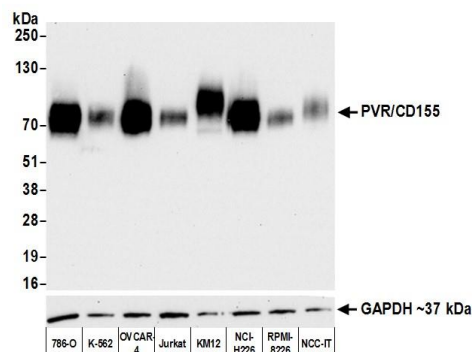
**Detection of human PVR/CD155 by immunohistochemistry.** *Sample:* FFPE section of lung carcinoma. *Antibody:* Rabbit anti-PVR/CD155 recombinant monoclonal antibody [BLR074G] (A700-074-T lot 1) used at 1:100. *Secondary:* HRP-conjugated goat anti-rabbit IgG (A120-501P). *Substrate:* DAB.



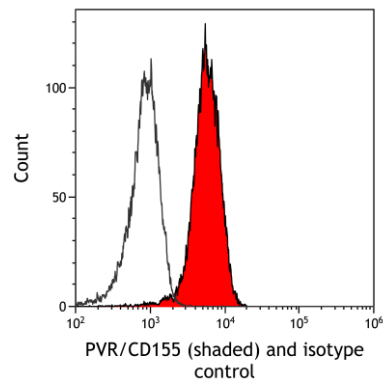
**Detection of human PVR/CD155 by immunocytochemistry.** *Sample:* FFPE section of HT29 cells. *Antibody:* Rabbit anti-PVR/CD155 recombinant monoclonal antibody [BLR074G] (A700-074-T lot 1) used at 1:100. *Secondary:* HRP-conjugated goat anti-rabbit IgG (A120-501P). *Substrate:* DAB.



**Detection of human PVR/CD155 in FFPE hepatic carcinoma by IHC-IF.** *Antibody:* Rabbit anti-PVR/CD155 recombinant monoclonal antibody [BLR074G] (A700-074 Lot 1). *Secondary:* HRP-conjugated goat anti-rabbit IgG (A120-501P). *Substrate:* Opal™. Counterstain: DAPI.



**Detection of human PVR/CD155 by western blot.** *Samples:* Whole cell lysate (10 µg) from 786-O, K-562, OVCAR-4, Jurkat, KM12, NCI-H226, RPMI-8226, and NCC-IT cells prepared using NETN lysis buffer. *Antibody:* Rabbit anti-PVR/CD155 recombinant monoclonal antibody [BLR074G] (A700-074-T lot 1) used at 1:1000. *Secondary:* HRP-conjugated goat anti-rabbit IgG (A120-101P). Chemiluminescence with an exposure time of 10 seconds. Lower Panel: Rabbit anti-GAPDH (A300-639A).



**Detection of human PVR/CD155 (shaded) in Jurkat cells by flow cytometry.** *Antibody:* Rabbit anti-PVR/CD155 recombinant monoclonal antibody [BLR074G] (A700-074) or isotype control (unshaded). *Secondary:* DyLight® 488-conjugated goat anti-rabbit IgG (A120-101D2).