

# PCNA Recombinant Monoclonal Antibody [BLR075G]

Rabbit Recombinant Monoclonal

Purified Protein ID NP\_002583.1  
Catalog No. A700-075-T GeneID 5111  
Lot No. A700-075-T-1



**APPLICATIONS** WB, IHC, ICC, IHC-IF  
**SPECIES REACTIVITY** Human  
**AMOUNT** 10 µl (5+ tests)  
**CONCENTRATION** 10 µg/ml  
**STORAGE/SHELF LIFE** 2 – 8° C / 1 year from date of receipt  
**PHYSICAL STATE** Liquid  
**BUFFER** Borate Buffered Saline (BBS) pH 8.2 with 0.1% BSA and 0.09% Sodium Azide  
**ISOTYPE** IgG  
**CLONE #** BLR075G  
**ORIGIN** USA  
**PRODUCTION PROCEDURES** Recombinant antibody was purified from cell culture supernatant.

Immunogen was a peptide representing a region between residue 225 and the C-terminus (residue 261) of human Proliferating cell nuclear antigen using the numbering given in entry NP\_002583.1 (Gene ID 5111).

**APPLICATIONS** Centrifuge tube to remove product from lid. Optimal working dilutions should be determined experimentally by the investigator. Prepare working dilution immediately before use.

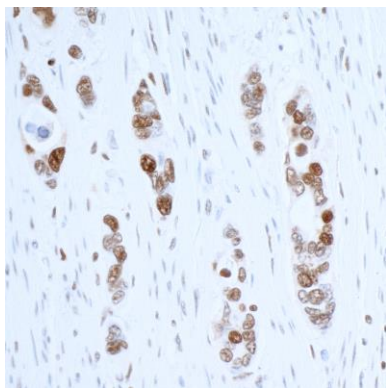
Western Blot 1:1000  
Immunohistochemistry 1:100 to 1:500. Epitope retrieval with citrate buffer pH6.0 is recommended for FFPE tissue sections.  
Immunocytochemistry 1:100 to 1:500. Epitope retrieval with citrate buffer pH6.0 is recommended for FFPE cell sections.  
Immunofluorescence (IHC) 1:100 to 1:500. Epitope retrieval with citrate buffer pH6.0 is recommended for FFPE tissue sections.

**IHC HUMAN CONTROLS** Breast Carcinoma, Lung Carcinoma, Ovarian Carcinoma, Prostate Carcinoma, OVCAR-3 Cells, PANC-1 Cells, SK-N-MC Cells, UACC-62 Cells

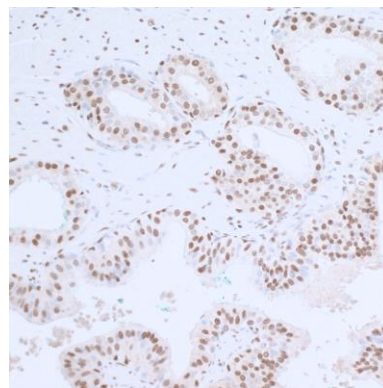
**ADDITIONAL INFO** <https://www.bethyl.com/product/A700-075-T>

Use the link above to view SDS, a current list of citations, and other product specific information.

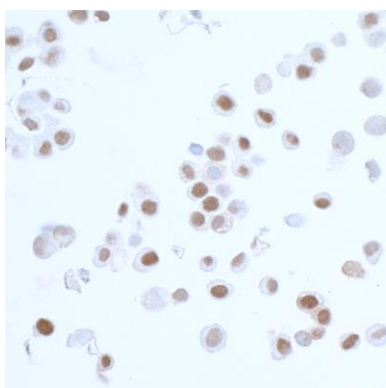
This document certifies that this product has met all of the quality control standards defined by Bethyl Laboratories, Inc.  
Eric McIntush, PhD | Chief Scientific Officer Date: July 29, 2020

**Detection of human PCNA by immunohistochemistry.**

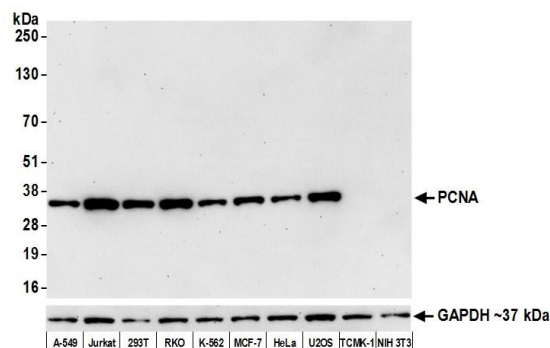
*Sample:* FFPE section of ovarian carcinoma. *Antibody:* Rabbit anti-PCNA recombinant monoclonal antibody [BLR075G] (A700-075-T lot 1) used at 1:250. *Secondary:* HRP-conjugated goat anti-rabbit IgG (A120-501P). *Substrate:* DAB.

**Detection of human PCNA by immunohistochemistry.**

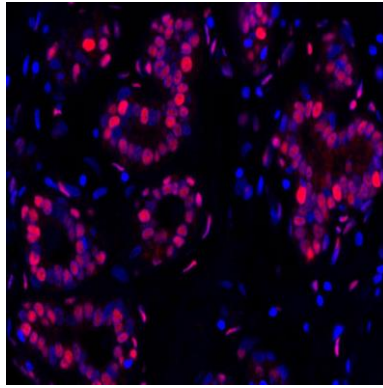
*Sample:* FFPE section of prostate carcinoma. *Antibody:* Rabbit anti-PCNA recombinant monoclonal antibody [BLR075G] (A700-075-T lot 1) used at 1:250. *Secondary:* HRP-conjugated goat anti-rabbit IgG (A120-501P). *Substrate:* DAB.

**Detection of human PCNA by immunocytochemistry.**

*Sample:* FFPE section of OVCAR-3 cells. *Antibody:* Rabbit anti-PCNA recombinant monoclonal antibody [BLR075G] (A700-075-T lot 1) used at 1:250. *Secondary:* HRP-conjugated goat anti-rabbit IgG (A120-501P). *Substrate:* DAB.

**Detection of human PCNA by western blot. *Samples:***

Whole cell lysate (50  $\mu$ g) from A-549, Jurkat, HEK293T, RKO, K-562, MCF-7, HeLa, U2OS, TCMK-1, and NIH 3T3 cells prepared using NETN lysis buffer. *Antibody:* Rabbit anti-PCNA recombinant monoclonal antibody [BLR075G] (A700-075-T lot 1) used at 1:1000. *Secondary:* HRP-conjugated goat anti-rabbit IgG (A120-101P). Chemiluminescence with an exposure time of 30 seconds. Lower Panel: Rabbit anti-GAPDH (A300-639A).



**Detection of human PCNA in FFPE breast carcinoma by immunohistochemistry-IF.** *Antibody:* Rabbit anti-PCNA recombinant monoclonal antibody [BLR075G] (A700-075-T Lot 1). *Secondary:* HRP-conjugated goat anti-rabbit IgG (A120-501P). *Substrate:* Opal™. Counterstain: DAPI.