

PD-1 Recombinant Monoclonal Antibody [BLR076G]

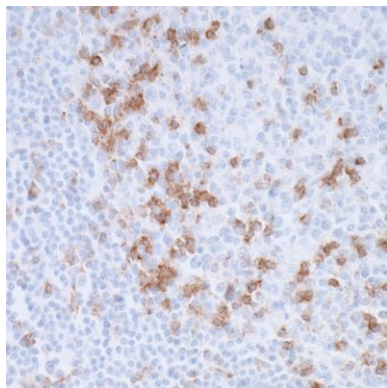
Rabbit Recombinant Monoclonal

Purified Protein ID NP_005009.2
Catalog No. A700-076-T GeneID 5133
Lot No. A700-076-T-1

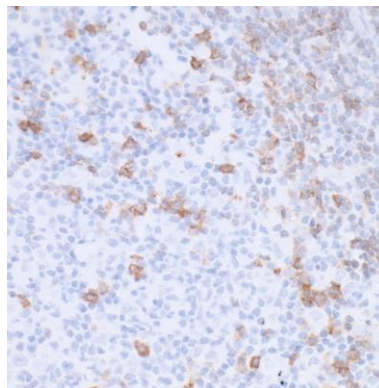


APPLICATIONS	IHC
SPECIES REACTIVITY	Human
AMOUNT	10 µl (5+ tests)
CONCENTRATION	1000 µg/ml
STORAGE/SHELF LIFE	2 – 8° C / 1 year from date of receipt
PHYSICAL STATE	Liquid
BUFFER	Borate Buffered Saline (BBS) pH 8.2 with 0.09% Sodium Azide, BSA Free
ISOTYPE	IgG
CLONE #	BLR076G
ORIGIN	USA
PRODUCTION PROCEDURES	Recombinant antibody was purified from cell culture supernatant. Immunogen was a recombinant protein representing the extracellular domain of human PD-1 (residues 24-164, NP_005009.2).
APPLICATIONS	Centrifuge tube to remove product from lid. Optimal working dilutions should be determined experimentally by the investigator. Prepare working dilution immediately before use. Immunohistochemistry 1:100 to 1:500. Epitope retrieval with citrate buffer pH6.0 is recommended for FFPE tissue sections.
IHC HUMAN CONTROLS	Hodgkins Lymphoma, Tonsil
ADDITIONAL INFO	https://www.bethyl.com/product/A700-076-T Use the link above to view SDS, a current list of citations, and other product specific information.

This document certifies that this product has met all of the quality control standards defined by Bethyl Laboratories, Inc.
Eric McIntush, PhD | Chief Scientific Officer Date: January 24, 2020



Detection of human PD-1 in FFPE tonsil by IHC. *Antibody:* Rabbit anti-PD-1 recombinant monoclonal [BLR076G] (A700-076-T lot 1). *Secondary:* HRP-conjugated goat anti-rabbit IgG (A120-501P). *Substrate:* DAB.



Detection of human PD-1 in FFPE Hodgkin's lymphoma by IHC. *Antibody:* Rabbit anti-PD-1 recombinant monoclonal [BLR076G] (A700-076-T lot 1). *Secondary:* HRP-conjugated goat anti-rabbit IgG (A120-501P). *Substrate:* DAB.