

# EpCAM Recombinant Monoclonal Antibody [BLR077G]

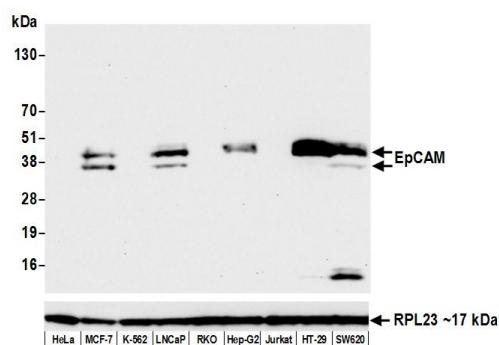
Rabbit Recombinant Monoclonal

Purified Protein ID NP\_006197.1  
Catalog No. A700-077 GeneID 4072  
Lot No. A700-077-1

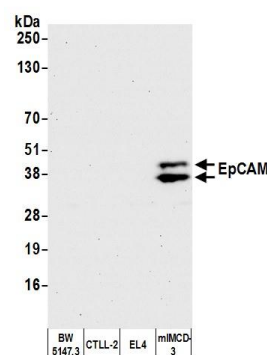


<b>APPLICATIONS</b>	WB, IP, IHC, ICC, IHC-IF
<b>SPECIES REACTIVITY</b>	Human, Mouse
<b>AMOUNT</b>	100 µl (50+ tests)
<b>CONCENTRATION</b>	500 µg/ml
<b>STORAGE/SHELF LIFE</b>	2 – 8° C / 1 year from date of receipt
<b>PHYSICAL STATE</b>	Liquid
<b>BUFFER</b>	Borate Buffered Saline (BBS) pH 8.2 with 0.1% BSA and 0.09% Sodium Azide
<b>ISOTYPE</b>	IgG
<b>CLONE #</b>	BLR077G
<b>ORIGIN</b>	USA
<b>PRODUCTION PROCEDURES</b>	Recombinant antibody was purified from cell culture supernatant.  Immunogen was a peptide representing a region between residue 264 and the C-terminus (residue 314) of human Epithelial cell adhesion molecule using the numbering given in entry NP_002345.2 (Gene ID 4072).
<b>APPLICATIONS</b>	Centrifuge tube to remove product from lid. Optimal working dilutions should be determined experimentally by the investigator. Prepare working dilution immediately before use.  Western Blot 1:1000 Immunoprecipitation 12 µl/1 mg lysate Immunohistochemistry 1:100 to 1:500. Epitope retrieval with citrate buffer pH6.0 is recommended for FFPE tissue sections. Immunocytochemistry 1:100 to 1:500. Epitope retrieval with citrate buffer pH6.0 is recommended for FFPE cell sections. Immunofluorescence (IHC) 1:100 to 1:500. Epitope retrieval with citrate buffer pH6.0 is recommended for FFPE tissue sections.
<b>IHC HUMAN CONTROLS</b>	Breast Carcinoma, Ovarian Carcinoma, Prostate Carcinoma, HT-29 Cells, MCF-7 Cells, OVCAR-3 Cells, SW620 Cells
<b>ADDITIONAL INFO</b>	<a href="https://www.bethyl.com/product/A700-077">https://www.bethyl.com/product/A700-077</a> Use the link above to view SDS, a current list of citations, and other product specific information.

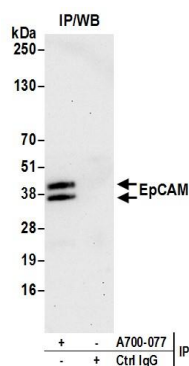
This document certifies that this product has met all of the quality control standards defined by Bethyl Laboratories, Inc.  
Eric McIntush, PhD | Chief Scientific Officer Date: August 17, 2020



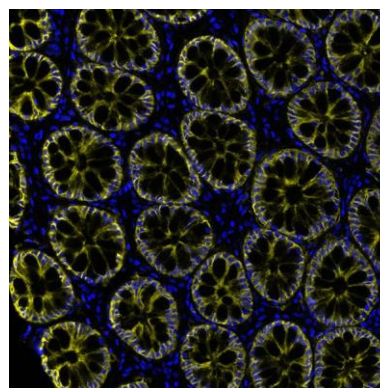
**Detection of human EpCAM by western blot.** *Samples:* Whole cell lysate (50 µg) from HeLa, MCF-7, K-562, LNCaP, RKO, Hep-G2, Jurkat, HT-29, and SW620 cells prepared using NETN lysis buffer. *Antibody:* Rabbit anti-EpCAM recombinant monoclonal antibody [BLR077G] (A700-077 lot 1) used at 1:1000. *Secondary:* HRP-conjugated goat anti-rabbit IgG (A120-101P). Chemiluminescence with an exposure time of 10 seconds. Lower Panel: Rabbit anti-RPL23 (A305-009A).



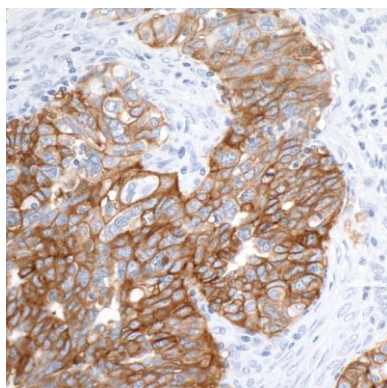
**Detection of mouse EpCAM by western blot.** *Samples:* Whole cell lysate (50 µg) from BW5147.3, CTLL-2, EL4, and mIMCD-3 cells prepared using NETN lysis buffer. *Antibody:* Rabbit anti-EpCAM recombinant monoclonal antibody [BLR077G] (A700-077 lot 1) used at 1:1000. *Secondary:* HRP-conjugated goat anti-rabbit IgG (A120-101P). Chemiluminescence with an exposure time of 30 seconds.



**Detection of human EpCAM by western blot of immunoprecipitates.** *Samples:* Whole cell lysate (1.0 mg per IP reaction; 20% of IP loaded) from MCF-7 cells prepared using NETN lysis buffer. *Antibody:* Rabbit anti-EpCAM recombinant monoclonal antibody [BLR077G] (A700-077 lot 1) used at 12 µl per reaction. For blotting immunoprecipitated EpCAM, A700-077 was used at 1:1000. Chemiluminescence with an exposure time of 30 seconds.



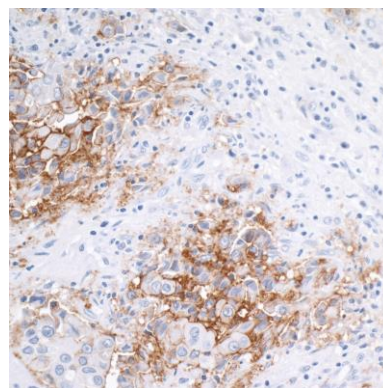
**Detection of human EpCAM in FFPE colon carcinoma by immunohistochemistry-IF.** *Antibody:* Rabbit anti-EpCAM recombinant monoclonal antibody [BLR077G] (A700-077 Lot 1). *Secondary:* HRP-conjugated goat anti-rabbit IgG (A120-501P). *Substrate:* Opal™. Counterstain: DAPI.

**Detection of human EpCAM by immunohistochemistry.**

*Sample:* FFPE section of human ovarian carcinoma.

*Antibody:* Rabbit anti-EpCAM recombinant monoclonal antibody [BLR077G] (A700-077-1) used at 1:100.

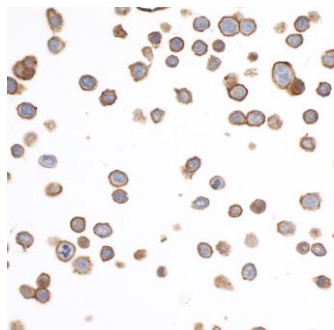
*Secondary:* HRP-conjugated goat anti-rabbit IgG (A120-501P). *Substrate:* DAB.

**Detection of human EpCAM by immunohistochemistry.**

*Sample:* FFPE section of human breast carcinoma.

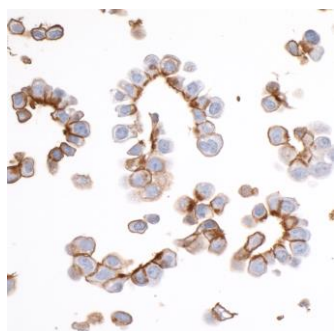
*Antibody:* Rabbit anti-EpCAM recombinant monoclonal antibody [BLR077G] (A700-077-1) used at 1:100.

*Secondary:* HRP-conjugated goat anti-rabbit IgG (A120-501P). *Substrate:* DAB.

**Detection of human EpCAM by immunocytochemistry.** *Sample:* FFPE section of HT-29 cells. *Antibody:*

Rabbit anti-EpCAM recombinant monoclonal antibody [BLR077G] (A700-077-1) used at 1:100.

*Secondary:* HRP-conjugated goat anti-rabbit IgG (A120-501P). *Substrate:* DAB.

**Detection of human EpCAM by immunocytochemistry.** *Sample:* FFPE section of OVCAR-3 cells.

*Antibody:* Rabbit anti-EpCAM recombinant monoclonal antibody [BLR077G] (A700-077-1) used at

1:100. *Secondary:* HRP-conjugated goat anti-rabbit IgG (A120-501P). *Substrate:* DAB.