

EpCAM Recombinant Monoclonal Antibody [BLR077G]

Rabbit Recombinant Monoclonal

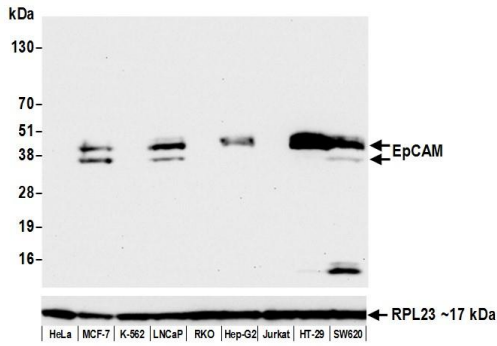
Purified		RefSeq ID	NP_006197.1
Catalog No.	A700-077-T	Uniprot ID	P16422
Lot No.	1	GeneID	4072

APPLICATIONS	WB, IP, IHC, ICC, IHC-IF, Flow Cyt
SPECIES REACTIVITY	Human
AMOUNT	10 µl (5+ tests)
CONCENTRATION	500 µg/ml
STORAGE/SHELF LIFE	2 – 8°C / 1 year from date of receipt
PHYSICAL STATE	Liquid
BUFFER	Borate Buffered Saline (BBS) pH 8.2 with 0.1% BSA and 0.09% Sodium Azide
ISOTYPE	IgG
CLONE #	BLR077G
ORIGIN	USA
PRODUCTION PROCEDURES	Recombinant antibody was purified from cell culture supernatant. Immunogen was a peptide representing a region between residue 264 and the C-terminus (residue 314) of human Epithelial cell adhesion molecule using the numbering given in entry NP_002345.2 (Gene ID 4072).
APPLICATIONS	Centrifuge tube to remove product from lid. Optimal working dilutions should be determined experimentally by the investigator. Prepare working dilution immediately before use. Western Blot 1:1000 Immunoprecipitation 12 µl/mg lysate Immunohistochemistry 1:100 to 1:500. Epitope retrieval with citrate buffer pH6.0 is recommended for FFPE tissue sections. Immunocytochemistry 1:100 to 1:500. Epitope retrieval with citrate buffer pH6.0 is recommended for FFPE cell sections. Immunofluorescence (IHC) 1:100 to 1:500. Epitope retrieval with citrate buffer pH6.0 is recommended for FFPE tissue sections. Flow Cytometry Fixed in 4% formaldehyde and permeabilized with 90% methanol. 0.5 µl per 1 × 10 ⁶ cells. For extracellular applications or applications using live cells use EpCAM (A700-192).
APPLICATION NOTES	All western blot analysis is performed using 5% Milk-TBST for blocking and as antibody diluent. Primary antibody is incubated overnight. Western blots of cell lysates are performed using Goat anti-Rabbit IgG Heavy and Light Chain Antibody (Cat. No. A120-101P). Western blots of immunoprecipitates are performed using Goat anti-Rabbit Light Chain HRP Conjugate (Cat. No. A120-113P) with 5% Normal Pig Serum (Cat. No. S100-020) added to the blocking buffer.
IHC HUMAN CONTROLS	Breast Carcinoma, Ovarian Carcinoma, Prostate Carcinoma, HT-29 Cells, MCF-7 Cells, OVCAR-3 Cells, SW620 Cells
ADDITIONAL INFO	https://www.fortislife.com/p/A700-077-T Use the link above to view SDS, a current list of citations, and other product specific information.

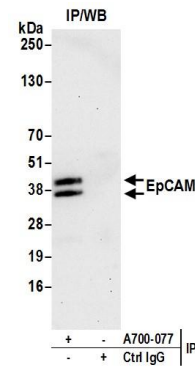
This document certifies that this product has met all of the quality control standards defined by Bethyl Laboratories, Inc.

Phone: 800.338.9579 • Fax: 866.597.6105 • Web: www.fortislife.com
Orders: orders@fortislife.com • Support: technical@fortislife.com

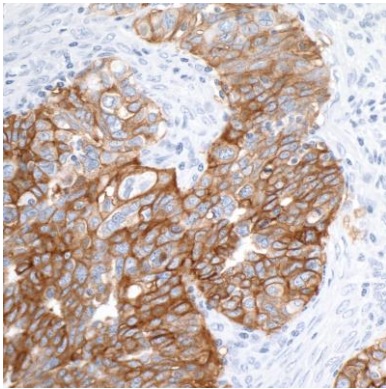
1



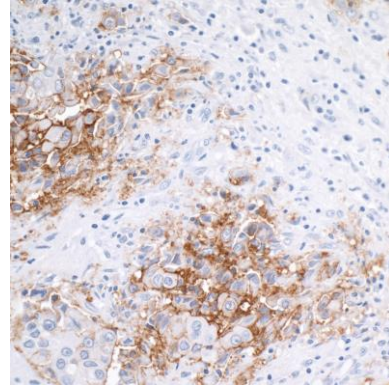
Detection of human EpCAM by western blot. *Samples:* Whole cell lysate (50 µg) from HeLa, MCF-7, K-562, LNCaP, RKO, Hep-G2, Jurkat, HT-29, and SW620 cells prepared using NETN lysis buffer. *Antibody:* Rabbit anti-EpCAM recombinant monoclonal antibody [BLR077G] (A700-077 lot 1) used at 1:1000. *Secondary:* HRP-conjugated goat anti-rabbit IgG (A120-101P). *Detection:* Chemiluminescence with an exposure time of 10 seconds. Lower Panel: Rabbit anti-RPL23 (A305-009A).



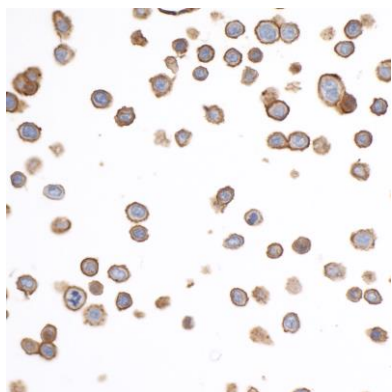
Detection of human EpCAM by western blot of immunoprecipitates. *Samples:* Whole cell lysate (1.0 mg per IP reaction; 20% of IP loaded) from MCF-7 cells prepared using NETN lysis buffer. *Antibody:* Rabbit anti-EpCAM recombinant monoclonal antibody [BLR077G] (A700-077 lot 1) used at 12 µl per reaction. For blotting immunoprecipitated EpCAM, A700-077 was used at 1:1000. *Detection:* Chemiluminescence with an exposure time of 30 seconds.



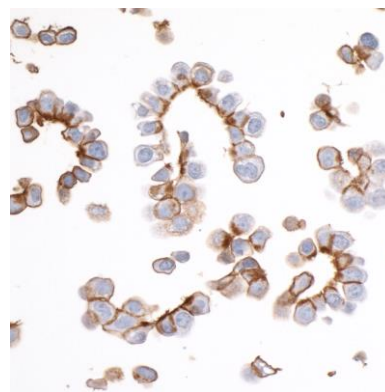
Detection of human EpCAM by immunohistochemistry. *Sample:* FFPE section of human ovarian carcinoma. *Antibody:* Rabbit anti-EpCAM recombinant monoclonal antibody [BLR077G] (A700-077-1) used at 1:100. *Secondary:* HRP-conjugated goat anti-rabbit IgG (A120-501P). *Substrate:* DAB.



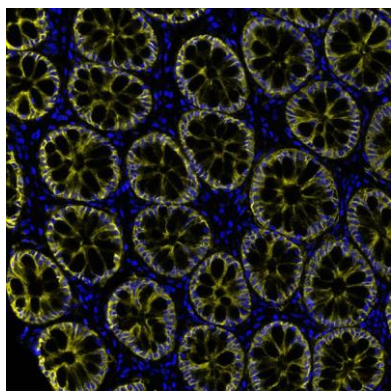
Detection of human EpCAM by immunohistochemistry. *Sample:* FFPE section of human breast carcinoma. *Antibody:* Rabbit anti-EpCAM recombinant monoclonal antibody [BLR077G] (A700-077-1) used at 1:100. *Secondary:* HRP-conjugated goat anti-rabbit IgG (A120-501P). *Substrate:* DAB.



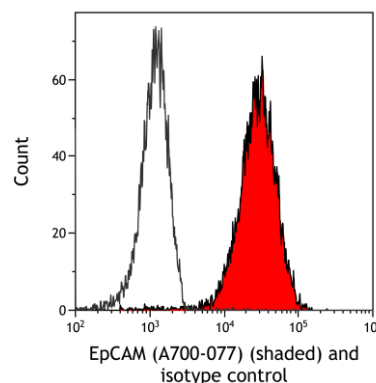
Detection of human EpCAM by immunocytochemistry.
Sample: FFPE section of HT-29 cells. *Antibody:* Rabbit anti-EpCAM recombinant monoclonal antibody [BLR077G] (A700-077-1) used at 1:100. *Secondary:* HRP-conjugated goat anti-rabbit IgG (A120-501P). *Substrate:* DAB.



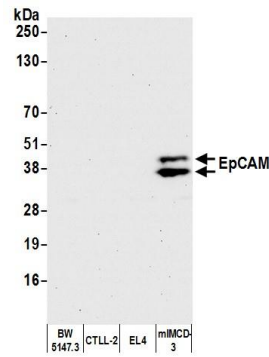
Detection of human EpCAM by immunocytochemistry.
Sample: FFPE section of OVCAR-3 cells. *Antibody:* Rabbit anti-EpCAM recombinant monoclonal antibody [BLR077G] (A700-077-1) used at 1:100. *Secondary:* HRP-conjugated goat anti-rabbit IgG (A120-501P). *Substrate:* DAB.



Detection of human EpCAM in FFPE colon carcinoma by immunohistochemistry-IF. *Antibody:* Rabbit anti-EpCAM recombinant monoclonal antibody [BLR077G] (A700-077 Lot 1). *Secondary:* HRP-conjugated goat anti-rabbit IgG (A120-501P). *Substrate:* Opal™. Counterstain: DAPI.



Detection of human EpCAM (shaded) in HT-29 cells by flow cytometry. *Antibody:* Rabbit anti-EpCAM recombinant monoclonal antibody [BLR077G] (A700-077) or isotype control (unshaded). *Secondary:* DyLight® 488-conjugated goat anti-rabbit IgG (A120-101D2).



Detection of mouse EpCAM by western blot. *Samples:* Whole cell lysate (50 µg) from BW5147.3, CTLL-2, EL4, and mIMCD-3 cells prepared using NETN lysis buffer. *Antibody:* Rabbit anti-EpCAM recombinant monoclonal antibody [BLR077G] (A700-077 lot 1) used at 1:1000. *Secondary:* HRP-conjugated goat anti-rabbit IgG (A120-101P). *Detection:* Chemiluminescence with an exposure time of 30 seconds.