

PDGFR alpha Recombinant Monoclonal Antibody [BLR078G]

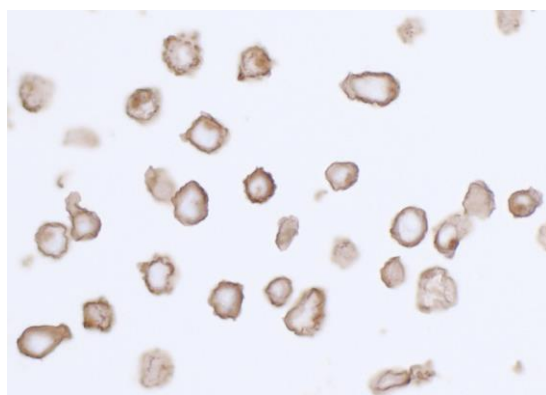
Rabbit Recombinant Monoclonal

Purified Protein ID NP_002345.2
Catalog No. A700-078 GeneID 5156
Lot No. A700-078-1

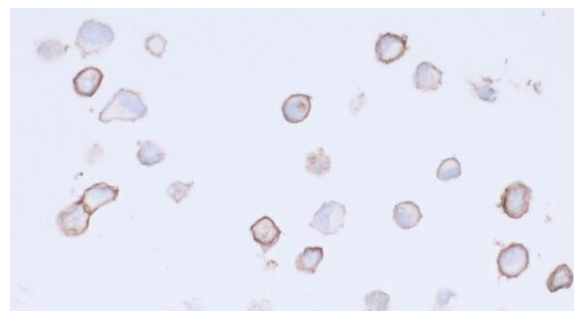


APPLICATIONS	WB, IP, ICC
SPECIES REACTIVITY	Human
AMOUNT	100 µl (50+ tests)
CONCENTRATION	250 µg/ml
STORAGE/SHELF LIFE	2 - 8° C / 1 year from date of receipt
PHYSICAL STATE	Liquid
BUFFER	Borate Buffered Saline (BBS) pH 8.2 with 0.1% BSA and 0.09% Sodium Azide
ISOTYPE	IgG
CLONE #	BLR078G
ORIGIN	USA
PRODUCTION PROCEDURES	Recombinant antibody was purified from cell culture supernatant. Immunogen was a recombinant protein representing the extracellular domain of human Platelet derived growth factor receptor alpha (residues 24-525, NP_006197.1).
APPLICATIONS	Centrifuge tube to remove product from lid. Optimal working dilutions should be determined experimentally by the investigator. Prepare working dilution immediately before use. Western Blot 1:1000 Immunoprecipitation 20 µl/1 mg lysate Immunocytochemistry 1:100 to 1:500. Epitope retrieval with citrate buffer pH6.0 is recommended for FFPE cell sections.
IHC HUMAN CONTROLS	A204 Cells, BJ Cells, IMR-90 Cells, NCI-H1703 Cells, U-251MG Cells
ADDITIONAL INFO	https://www.bethyl.com/product/A700-078 Use the link above to view SDS, a current list of citations, and other product specific information.

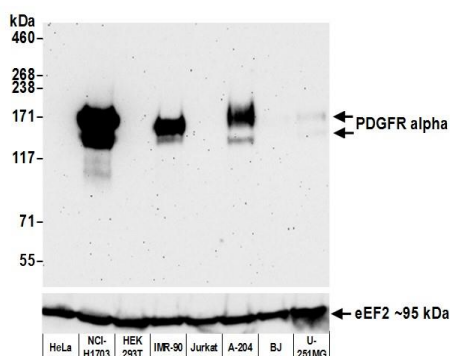
This document certifies that this product has met all of the quality control standards defined by Bethyl Laboratories, Inc.
Eric McIntush, PhD | Chief Scientific Officer Date: June 21, 2019



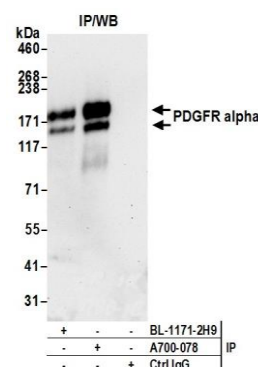
Detection of human PDGFR alpha by immunocytochemistry. *Sample:* FFPE section of NCI-H1703 cells. *Antibody:* Rabbit anti-PDGFR alpha recombinant monoclonal antibody [BLR078G] (A700-078 lot 1) used at 1:250. *Secondary:* HRP-conjugated goat anti-rabbit IgG (A120-501P). *Substrate:* DAB.



Detection of human PDGFR alpha by immunocytochemistry. *Sample:* FFPE section of A-204 cells. *Antibody:* Rabbit anti-PDGFR alpha recombinant monoclonal antibody [BLR078G] (A700-078 lot 1) used at 1:250. *Secondary:* HRP-conjugated goat anti-rabbit IgG (A120-501P). *Substrate:* DAB.



Detection of human PDGFR alpha by western blot. *Samples:* Whole cell lysate (50 µg) from HeLa, NCI-H1703, HEK293T, IMR-90, Jurkat, A-204, BJ, and U-251MG cells prepared using NETN lysis buffer. *Antibody:* Rabbit anti-PDGFR alpha recombinant monoclonal antibody [BLR078G] (A700-078 lot 1) used at 1:1000. *Secondary:* HRP-conjugated goat anti-rabbit IgG (A120-101P). Chemiluminescence with an exposure time of 3 minutes. Lower Panel: Rabbit anti-eEF2 (A301-688A).



Detection of human PDGFR alpha by western blot of immunoprecipitates. *Samples:* Whole cell lysate (1.0 mg per IP reaction; 20% of IP loaded) from NCI-H1703 cells prepared using NETN lysis buffer. *Antibodies:* Rabbit anti-PDGFR alpha recombinant monoclonal antibody [BLR078G] (A700-078 lot 1) used for IP at 20 µl/mg lysate. PDGFR alpha was also immunoprecipitated by rabbit anti-PDGFR alpha recombinant monoclonal antibody [BL-1171-2H9]. For blotting immunoprecipitated PDGFR alpha, A700-078 was used at 1:1000. Chemiluminescence with an exposure time of 30 seconds.