

PDGFR alpha Recombinant Monoclonal Antibody [BLR078G]

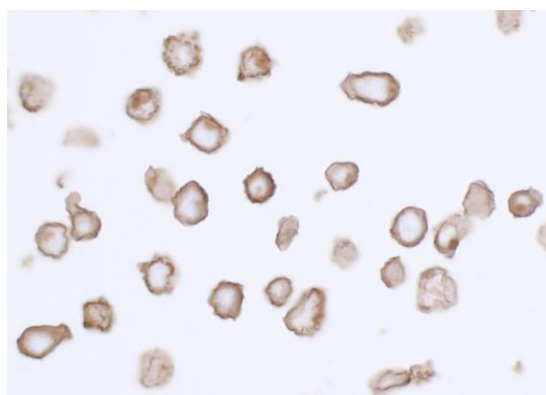
Rabbit Recombinant Monoclonal

Purified Protein ID NP_002345.2
Catalog No. A700-078-T GeneID 5156
Lot No. A700-078-T-1

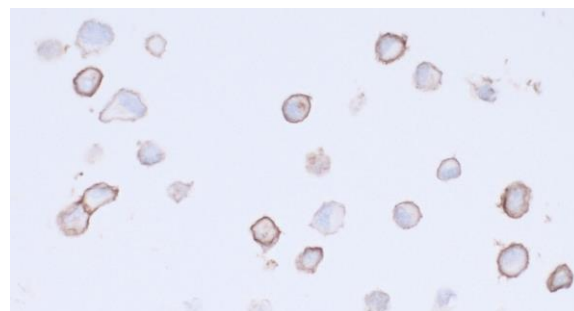


| | |
|------------------------------|---|
| APPLICATIONS | WB, IP, ICC |
| SPECIES REACTIVITY | Human |
| AMOUNT | 10 µl (5+ tests) |
| CONCENTRATION | 250 µg/ml |
| STORAGE/SHELF LIFE | 2 - 8° C / 1 year from date of receipt |
| PHYSICAL STATE | Liquid |
| BUFFER | Borate Buffered Saline (BBS) pH 8.2 with 0.1% BSA and 0.09% Sodium Azide |
| ISOTYPE | IgG |
| CLONE # | BLR078G |
| ORIGIN | USA |
| PRODUCTION PROCEDURES | Recombinant antibody was purified from cell culture supernatant. Immunogen was a recombinant protein representing the extracellular domain of human Platelet derived growth factor receptor alpha (residues 24-525, NP_006197.1). |
| APPLICATIONS | Centrifuge tube to remove product from lid. Optimal working dilutions should be determined experimentally by the investigator. Prepare working dilution immediately before use. Western Blot 1:1000 Immunoprecipitation 20 µl/1 mg lysate Immunocytochemistry 1:100 to 1:500. Epitope retrieval with citrate buffer pH6.0 is recommended for FFPE cell sections. |
| IHC HUMAN CONTROLS | A204 Cells, BJ Cells, IMR-90 Cells, NCI-H1703 Cells, U-251MG Cells |
| ADDITIONAL INFO | https://www.bethyl.com/product/A700-078-T Use the link above to view SDS, a current list of citations, and other product specific information. |

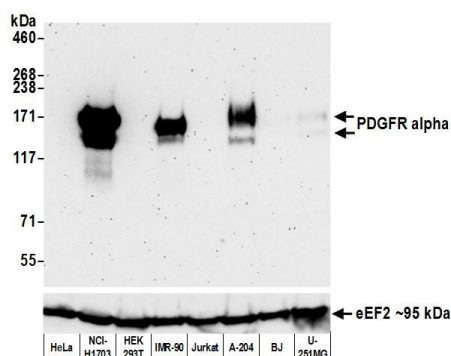
This document certifies that this product has met all of the quality control standards defined by Bethyl Laboratories, Inc.
Eric McIntush, PhD | Chief Scientific Officer Date: June 21, 2019



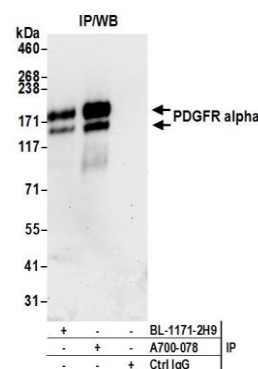
Detection of human PDGFR alpha by immunocytochemistry. *Sample:* FFPE section of NCI-H1703 cells. *Antibody:* Rabbit anti-PDGFR alpha recombinant monoclonal antibody [BLR078G] (A700-078-T lot 1) used at 1:250. *Secondary:* HRP-conjugated goat anti-rabbit IgG (A120-501P). *Substrate:* DAB.



Detection of human PDGFR alpha by immunocytochemistry. *Sample:* FFPE section of A-204 cells. *Antibody:* Rabbit anti-PDGFR alpha recombinant monoclonal antibody [BLR078G] (A700-078-T lot 1) used at 1:250. *Secondary:* HRP-conjugated goat anti-rabbit IgG (A120-501P). *Substrate:* DAB.



Detection of human PDGFR alpha by western blot. *Samples:* Whole cell lysate (50 µg) from HeLa, NCI-H1703, HEK293T, IMR-90, Jurkat, A-204, BJ, and U-251MG cells prepared using NETN lysis buffer. *Antibody:* Rabbit anti-PDGFR alpha recombinant monoclonal antibody [BLR078G] (A700-078-T lot 1) used at 1:1000. *Secondary:* HRP-conjugated goat anti-rabbit IgG (A120-101P). Chemiluminescence with an exposure time of 3 minutes. Lower Panel: Rabbit anti-eEF2 (A301-688A).



Detection of human PDGFR alpha by western blot of immunoprecipitates. *Samples:* Whole cell lysate (1.0 mg per IP reaction; 20% of IP loaded) from NCI-H1703 cells prepared using NETN lysis buffer. *Antibodies:* Rabbit anti-PDGFR alpha recombinant monoclonal antibody [BLR078G] (A700-078-T lot 1) used for IP at 20 µl/mg lysate. PDGFR alpha was also immunoprecipitated by rabbit anti-PDGFR alpha recombinant monoclonal antibody [BL-1171-2H9]. For blotting immunoprecipitated PDGFR alpha, A700-078-T was used at 1:1000. Chemiluminescence with an exposure time of 30 seconds.