

# MEK2 Recombinant Monoclonal Antibody [BLR079G]

Rabbit Recombinant Monoclonal

Purified Protein ID NP\_109587.1  
Catalog No. A700-079-T GeneID 5605  
Lot No. A700-079-T-1



**APPLICATIONS** WB, IP, IHC, ICC  
**SPECIES REACTIVITY** Human, Mouse  
**AMOUNT** 10 µl (5+ tests)  
**CONCENTRATION** 100 µg/ml  
**STORAGE/SHELF LIFE** 2 - 8° C / 1 year from date of receipt  
**PHYSICAL STATE** Liquid  
**BUFFER** Borate Buffered Saline (BBS) pH 8.2 with 0.1% BSA and 0.09% Sodium Azide  
**ISOTYPE** IgG  
**CLONE #** BLR079G  
**ORIGIN** USA  
**PRODUCTION PROCEDURES** Recombinant antibody was purified from cell culture supernatant.

Immunogen was a peptide representing a region between residue 1 and 50 of human Mitogen-activated protein kinase kinase 2 (MEK2) using the numbering given in entry NP\_109587.1 (Gene ID 5605).

**APPLICATIONS** Centrifuge tube to remove product from lid. Optimal working dilutions should be determined experimentally by the investigator. Prepare working dilution immediately before use.

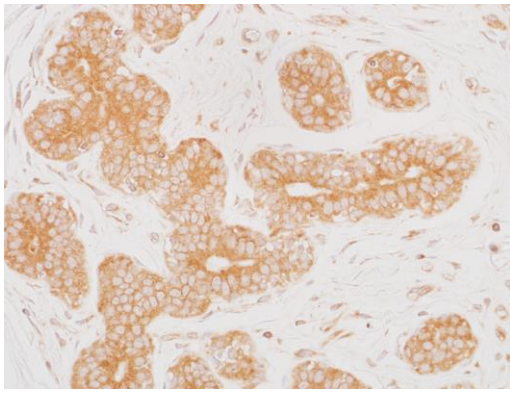
Western Blot 1:1000  
Immunoprecipitation 20 µl/1 mg lysate  
Immunohistochemistry 1:100 to 1:500. Epitope retrieval with citrate buffer pH6.0 is recommended for FFPE tissue sections.  
Immunocytochemistry 1:100 to 1:500. Epitope retrieval with citrate buffer pH6.0 is recommended for FFPE cell sections.

**IHC HUMAN CONTROLS** Breast Carcinoma, Ovarian Carcinoma, Prostate Carcinoma, KG-1 Cells, OVCAR-4 Cells, OVCAR-8 Cells

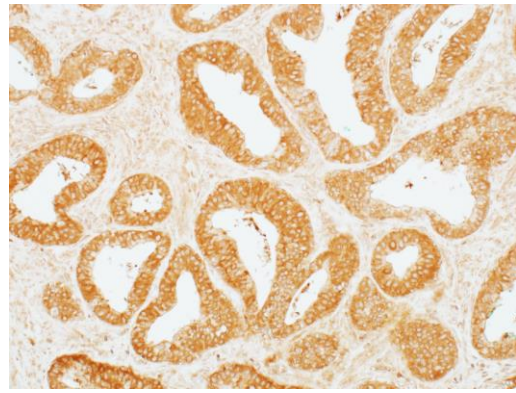
**ADDITIONAL INFO** <https://www.bethyl.com/product/A700-079-T>

Use the link above to view SDS, a current list of citations, and other product specific information.

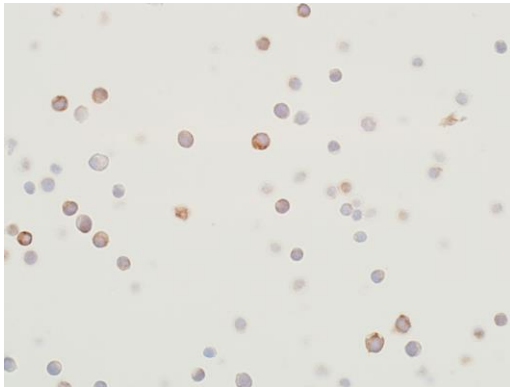
This document certifies that this product has met all of the quality control standards defined by Bethyl Laboratories, Inc.  
Eric McIntush, PhD | Chief Scientific Officer Date: June 25, 2019



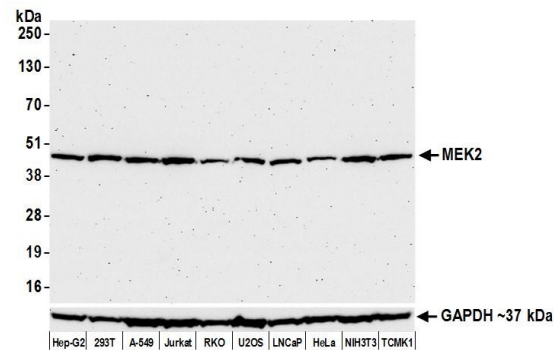
**Detection of human MEK2 in FFPE breast carcinoma by IHC.** *Antibody:* Rabbit anti-MEK2 recombinant monoclonal antibody [BLR079G] (A700-079-T lot 1). *Secondary:* HRP-conjugated goat anti-rabbit IgG (A120-501P). *Substrate:* DAB.



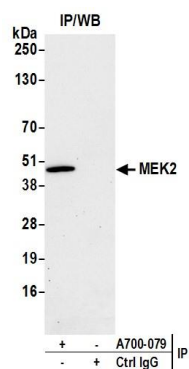
**Detection of human MEK2 in FFPE prostate carcinoma by IHC.** *Antibody:* Rabbit anti-MEK2 recombinant monoclonal antibody [BLR079G] (A700-079-T lot 1). *Secondary:* HRP-conjugated goat anti-rabbit IgG (A120-501P). *Substrate:* DAB.



**Detection of human MEK2 in FFPE KG-1 cells by ICC.** *Antibody:* Rabbit anti-MEK2 recombinant monoclonal antibody [BLR079G] (A700-079-T lot 1). *Secondary:* HRP-conjugated goat anti-rabbit IgG (A120-501P). *Substrate:* DAB.



**Detection of human and mouse MEK2 by western blot.** *Samples:* Whole cell lysate (50 µg) from Hep-G2, HEK293T, A-549, Jurkat, RKO, U2OS, LNCaP, HeLa, NIH 3T3, and TCMK-1 cells prepared using NETN lysis buffer. *Antibody:* Rabbit anti-MEK2 recombinant monoclonal antibody [BLR079G] (A700-079-T lot 1) used at 1:1000. *Secondary:* HRP-conjugated goat anti-rabbit IgG (A120-101P). Chemiluminescence with an exposure time of 3 minutes. Lower Panel: Rabbit anti-GAPDH (A300-639A).



**Detection of human MEK2 by western blot of immunoprecipitates.** *Samples:* Whole cell lysate (1.0 mg per IP reaction; 20% of IP loaded) from HEK293T cells prepared using NETN lysis buffer. *Antibody:* Rabbit anti-MEK2 recombinant monoclonal antibody [BLR079G] (A700-079-T lot 1) used at 20  $\mu$ l/mg lysate. For blotting immunoprecipitated MEK2, A700-079-T was used at 1:1000. Chemiluminescence with an exposure time of 30 seconds.