

PDGFR beta Recombinant Monoclonal Antibody [BLR081G]

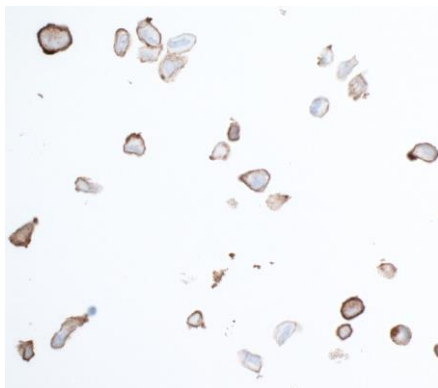
Rabbit Recombinant Monoclonal

Purified Protein ID NP_002600.1
Catalog No. A700-081 GeneID 5159
Lot No. A700-081-1

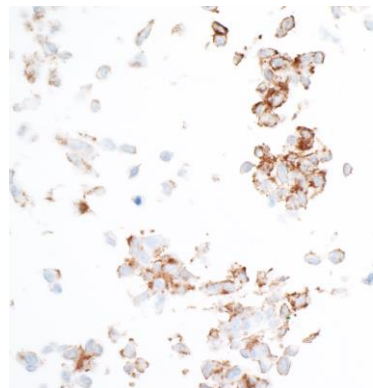


APPLICATIONS	WB, IP, ICC
SPECIES REACTIVITY	Human
AMOUNT	100 µl (50+ tests)
CONCENTRATION	1000 µg/ml
STORAGE/SHELF LIFE	2 – 8° C / 1 year from date of receipt
PHYSICAL STATE	Liquid
BUFFER	Borate Buffered Saline (BBS) pH 8.2 with 0.09% Sodium Azide, BSA Free
ISOTYPE	IgG
CLONE #	BLR081G
ORIGIN	USA
PRODUCTION PROCEDURES	Recombinant antibody was purified from cell culture supernatant. Immunogen was a recombinant protein representing the extracellular domain of human Platelet Derived Growth Factor Receptor beta (residues 33–532, NP_002600.1).
APPLICATIONS	Centrifuge tube to remove product from lid. Optimal working dilutions should be determined experimentally by the investigator. Prepare working dilution immediately before use. Western Blot 1:1000 Immunoprecipitation 6 µl/1 mg lysate Immunocytochemistry 1:100 to 1:500. Epitope retrieval with citrate buffer pH6.0 is recommended for FFPE cell sections.
IHC HUMAN CONTROLS	A-172 Cells, BJ Cells, IMR-90 Cells, NCI-H226 Cells, OVCAR-8 Cells
ADDITIONAL INFO	https://www.bethyl.com/product/A700-081 Use the link above to view SDS, a current list of citations, and other product specific information.

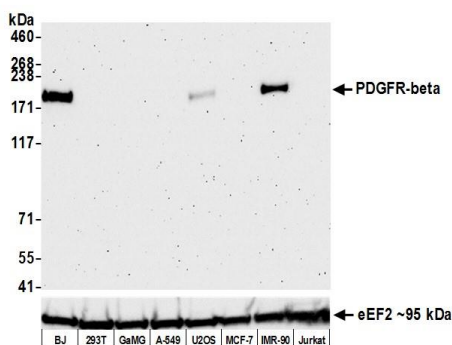
This document certifies that this product has met all of the quality control standards defined by Bethyl Laboratories, Inc.
Eric McIntush, PhD | Chief Scientific Officer Date: January 24, 2020



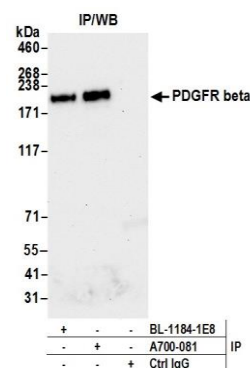
Detection of human PDGFR beta in FFPE A-172 cells by ICC. *Antibody:* Rabbit anti-PDGFR beta recombinant monoclonal antibody [BLR081G] (A700-081 lot 1). *Secondary:* HRP-conjugated goat anti-rabbit IgG (A120-501P). *Substrate:* DAB.



Detection of human PDGFR beta in FFPE OVCAR-8 cells by ICC. *Antibody:* Rabbit anti-PDGFR beta recombinant monoclonal antibody [BLR081G] (A700-081 lot 1). *Secondary:* HRP-conjugated goat anti-rabbit IgG (A120-501P). *Substrate:* DAB.



Detection of human PDGFR beta by western blot. *Samples:* Whole cell lysate (50 µg) from BJ, HEK293T, GaMG, A-549, U2OS, MCF-7, IMR-90, and Jurkat cells prepared using NETN lysis buffer. *Antibody:* Rabbit anti-PDGFR beta recombinant monoclonal antibody [BLR081G] (A700-081 lot 1) used at 1:1000. *Secondary:* HRP-conjugated goat anti-rabbit IgG (A120-101P). Chemiluminescence with an exposure time of 3 minutes. Lower Panel: Rabbit anti-eEF2 (A301-688A).



Detection of human PDGFR beta by western blot of immunoprecipitates. *Samples:* Whole cell lysate (1.0 mg per IP reaction; 20% of IP loaded) from BJ cells prepared using NETN lysis buffer. *Antibodies:* Rabbit anti-PDGFR beta recombinant monoclonal antibody [BLR081G] (A700-081 lot 1) used for IP at 6 µl per reaction. PDGFR beta was also immunoprecipitated by rabbit anti-PDGFR beta recombinant monoclonal antibody [BL-1184-1E8]. For blotting immunoprecipitated PDGFR beta, A700-081 was used at 1:1000. Chemiluminescence with an exposure time of 10 seconds.