

# alpha Smooth Muscle Actin Recombinant Monoclonal Antibody [BLR082G]

Rabbit Recombinant Monoclonal

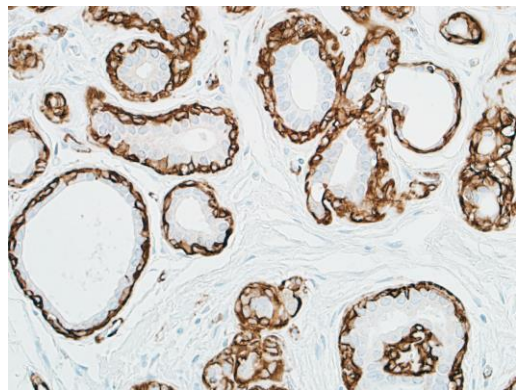
Purified Protein ID NP\_001135417.1  
Catalog No. A700-082-T GeneID 59  
Lot No. A700-082-T-1



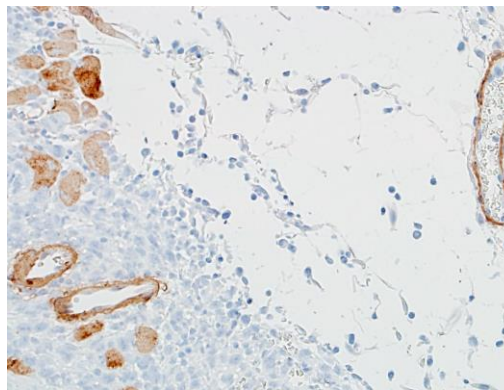
<b>APPLICATIONS</b>	WB, IHC, ICC
<b>SPECIES REACTIVITY</b>	Human, Mouse
<b>AMOUNT</b>	10 µl (5+ tests)
<b>CONCENTRATION</b>	100 µg/ml
<b>STORAGE/SHELF LIFE</b>	2 – 8° C / 1 year from date of receipt
<b>PHYSICAL STATE</b>	Liquid
<b>BUFFER</b>	Borate Buffered Saline (BBS) pH 8.2 with 0.1% BSA and 0.09% Sodium Azide
<b>ISOTYPE</b>	IgG
<b>CLONE #</b>	BLR082G
<b>ORIGIN</b>	USA
<b>PRODUCTION PROCEDURES</b>	Recombinant antibody was purified from cell culture supernatant.  Immunogen was a peptide representing a region between residue between 1 and 50 of human aortic smooth muscle actin using the numbering given in entry NP_001135417.1 (Gene ID 59).
<b>APPLICATIONS</b>	Centrifuge tube to remove product from lid. Optimal working dilutions should be determined experimentally by the investigator. Prepare working dilution immediately before use.  Western Blot 1:1000  Immunohistochemistry 1:100 to 1:500. Epitope retrieval with citrate buffer pH6.0 is recommended for FFPE tissue sections.  Immunocytochemistry 1:100 to 1:500. Epitope retrieval with citrate buffer pH6.0 is recommended for FFPE tissue sections.
<b>IHC HUMAN CONTROLS</b>	Breast, Lung, Prostate, Tonsil, BJ Cells, IMR-90 Cells
<b>IHC MOUSE CONTROLS</b>	Colon Carcinoma CT26, NIH 3T3 Cells
<b>ADDITIONAL INFO</b>	<a href="https://www.bethyl.com/product/A700-082-T">https://www.bethyl.com/product/A700-082-T</a> Use the link above to view SDS, a current list of citations, and other product specific information.

This document certifies that this product has met all of the quality control standards defined by Bethyl Laboratories, Inc.  
Eric McIntush, PhD | Chief Scientific Officer Date: August 5, 2019

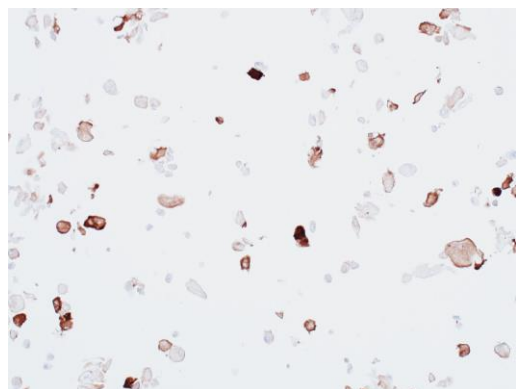
# alpha Smooth Muscle Actin Recombinant Monoclonal Antibody A700-082-T



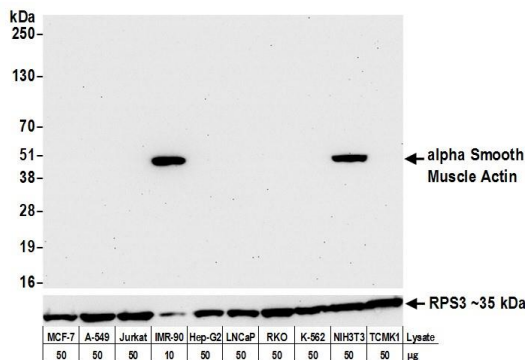
**Detection of human alpha Smooth Muscle Actin in FFPE breast by IHC.** *Antibody:* Rabbit anti-alpha Smooth Muscle Actin recombinant monoclonal antibody [BLR082G] (A700-082-T lot 1). *Secondary:* HRP-conjugated goat anti-rabbit IgG (A120-501P). *Substrate:* DAB.



**Detection of mouse alpha Smooth Muscle Actin in FFPE colon carcinoma CT26 by IHC.** *Antibody:* Rabbit anti-alpha Smooth Muscle Actin recombinant monoclonal antibody [BLR082G] (A700-082-T lot 1). *Secondary:* HRP-conjugated goat anti-rabbit IgG (A120-501P). *Substrate:* DAB.



**Detection of human alpha Smooth Muscle Actin in FFPE IMR-90 cells by ICC.** *Antibody:* Rabbit anti-alpha Smooth Muscle Actin recombinant monoclonal antibody [BLR082G] (A700-082-T lot 1). *Secondary:* HRP-conjugated goat anti-rabbit IgG (A120-501P). *Substrate:* DAB.



**Detection of human and mouse alpha Smooth Muscle Actin by western blot.** *Samples:* Whole cell lysate from MCF-7, A-549, Jurkat, IMR-90, Hep-G2, LNCAp, RKO, K-562, NIH 3T3, and TCMK-1 cells prepared using NETN lysis buffer. *Antibody:* Rabbit anti-alpha Smooth Muscle Actin recombinant monoclonal antibody [BLR082G] (A700-082-T lot 1) used at 1:1000. *Secondary:* HRP-conjugated goat anti-rabbit IgG (A120-101P). Chemiluminescence with an exposure time of 30 seconds. Lower Panel: Rabbit anti-RPS3 (A303-840A).