

# beta Catenin Recombinant Monoclonal Antibody [BLR086G]

Rabbit Recombinant Monoclonal

Purified		RefSeq ID	NP_001895.1
Catalog No.	A700-086-T	Uniprot ID	P35222
Lot No.	1	GeneID	1499

---

<b>APPLICATIONS</b>	WB, IP, IHC, ICC, IHC-IF, Flow Cyt
<b>SPECIES REACTIVITY</b>	Human, Mouse
<b>AMOUNT</b>	10 µl (5+ tests)
<b>CONCENTRATION</b>	250 µg/ml
<b>STORAGE/SHELF LIFE</b>	2 – 8°C / 1 year from date of receipt
<b>PHYSICAL STATE</b>	Liquid
<b>BUFFER</b>	Borate Buffered Saline (BBS) pH 8.2 with 0.1% BSA and 0.09% Sodium Azide
<b>ISOTYPE</b>	IgG
<b>CLONE #</b>	BLR086G
<b>ORIGIN</b>	USA
<b>PRODUCTION PROCEDURES</b>	Recombinant antibody was purified from cell culture supernatant.  Immunogen was a peptide representing a region between residue 725 and 775 of human catenin beta 1 using the numbering given in entry NP_001895.1 (Gene ID 1499).
<b>APPLICATIONS</b>	Centrifuge tube to remove product from lid. Optimal working dilutions should be determined experimentally by the investigator. Prepare working dilution immediately before use.  Western Blot 1:1000 Immunoprecipitation 20 µl/mg lysate Immunohistochemistry 1:100 to 1:500. Epitope retrieval with citrate buffer pH6.0 is recommended for FFPE tissue sections. Immunocytochemistry 1:100 to 1:500. Epitope retrieval with citrate buffer pH6.0 is recommended for FFPE cell sections. Immunofluorescence (IHC) 1:100 to 1:500. Epitope retrieval with citrate buffer pH6.0 is recommended for FFPE tissue sections. Flow Cytometry Fixed in 4% formaldehyde and permeabilized with 90% methanol. 1 µl per 1 x 10 <sup>6</sup> cells.
<b>APPLICATION NOTES</b>	All western blot analysis is performed using 5% Milk-TBST for blocking and as antibody diluent. Primary antibody is incubated overnight.  Western blots of cell lysates are performed using Goat anti-Rabbit IgG Heavy and Light Chain Antibody (Cat. No. A120-101P).  Western blots of immunoprecipitates are performed using Goat anti-Rabbit Light Chain HRP Conjugate (Cat. No. A120-113P) with 5% Normal Pig Serum (Cat. No. S100-020) added to the blocking buffer.
<b>IHC HUMAN CONTROLS</b>	Breast Carcinoma, Colon Carcinoma, Tonsil, NCI-H226 Cells, OVCAR-3 Cells
<b>IHC MOUSE CONTROLS</b>	Plasmacytoma
<b>ADDITIONAL INFO</b>	<a href="https://www.fortislifesciences.com/p/A700-086-T">https://www.fortislifesciences.com/p/A700-086-T</a> Use the link above to view SDS, a current list of citations, and other product specific information.

This document certifies that this product has met all of the quality control standards defined by Bethyl Laboratories, Inc.

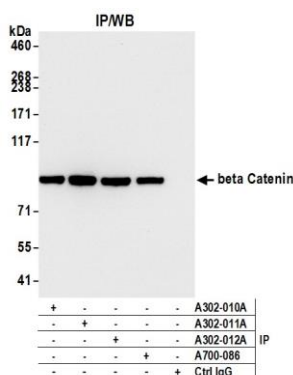
Michael Spencer, PhD

Date: January 8, 2024

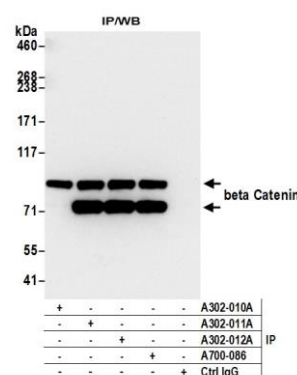
Phone: 800.338.9579 • Fax: 866.597.6105 • Web: [www.fortislifesciences.com](http://www.fortislifesciences.com)  
Orders: [orders@fortislifesciences.com](mailto:orders@fortislifesciences.com) • Support: [technical@fortislifesciences.com](mailto:technical@fortislifesciences.com)

1

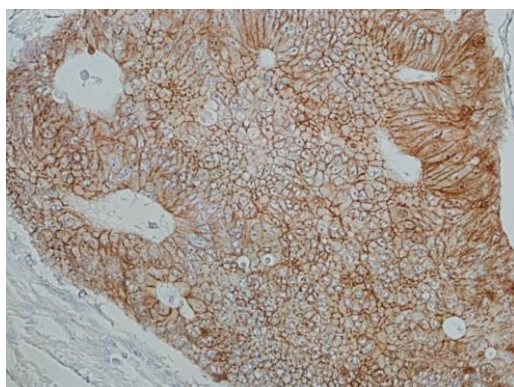




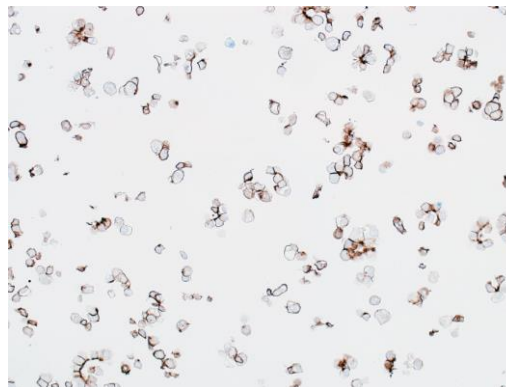
**Detection of human beta Catenin by western blot of immunoprecipitates.** *Samples:* Whole cell lysate (1.0 mg per IP reaction; 20% of IP loaded) from HeLa cells prepared using NETN lysis buffer. *Antibodies:* Rabbit anti-beta Catenin recombinant monoclonal antibody [BLR086G] (A700-086 lot 1) used for IP at 20  $\mu$ l per reaction. beta Catenin was also immunoprecipitated by rabbit anti-beta Catenin antibodies (A302-010A, A302-011A, A302-012A). For blotting immunoprecipitated beta Catenin, A700-086 was used at 1:1000. *Detection:* Chemiluminescence with an exposure time of 3 seconds.



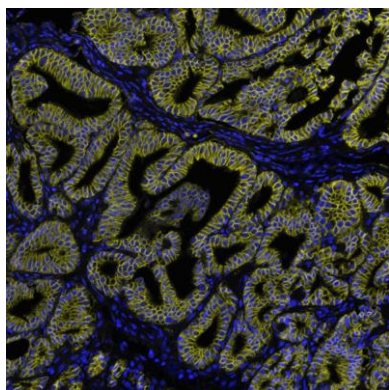
**Detection of human beta Catenin by western blot of immunoprecipitates.** *Samples:* Whole cell lysate (1.0 mg per IP reaction; 20% of IP loaded) from Hep-G2 cells prepared using NETN lysis buffer. *Antibodies:* Rabbit anti-beta Catenin recombinant monoclonal antibody [BLR086G] (A700-086 lot 1) used for IP at 20  $\mu$ l per reaction. beta Catenin was also immunoprecipitated by rabbit anti-beta Catenin antibodies (A302-010A, A302-011A, A302-012A). For blotting immunoprecipitated beta Catenin, A700-086 was used at 1:1000. *Detection:* Chemiluminescence with an exposure time of 3 seconds.



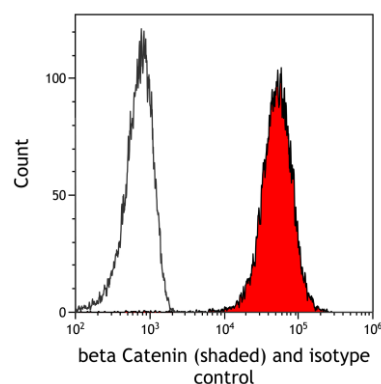
**Detection of human beta Catenin in FFPE colon carcinoma by IHC.** *Antibody:* Rabbit anti-beta Catenin recombinant monoclonal antibody [BLR086G] (A700-086 lot 1). *Secondary:* HRP-conjugated goat anti-rabbit IgG (A120-501P). *Substrate:* DAB.



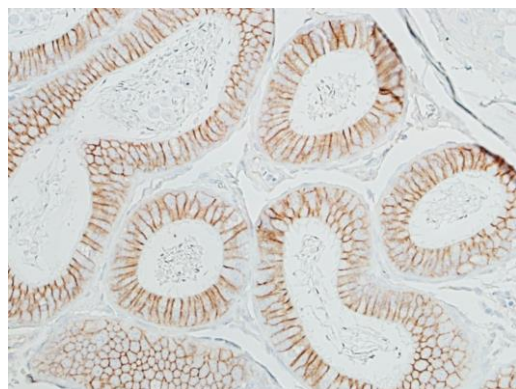
**Detection of human beta Catenin in FFPE OVCAR-3 cells by ICC.** *Antibody:* Rabbit anti-beta Catenin recombinant monoclonal antibody [BLR086G] (A700-086 lot 1). *Secondary:* HRP-conjugated goat anti-rabbit IgG (A120-501P). *Substrate:* DAB.



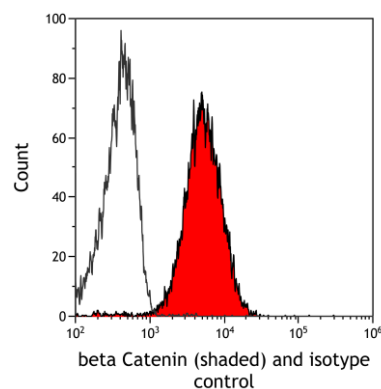
**Detection of human beta Catenin in FFPE prostate carcinoma by immunohistochemistry-IF.** *Antibody:* Rabbit anti-beta Catenin recombinant monoclonal antibody [BLR086G] (A700-086 Lot 1). *Secondary:* HRP-conjugated goat anti-rabbit IgG (A120-501P). *Substrate:* Opal™. *Counterstain:* DAPI.



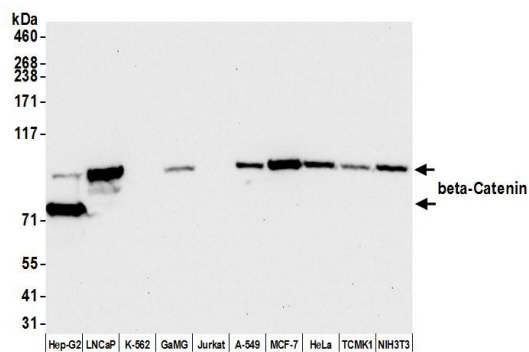
**Detection of human beta Catenin (shaded) in FaDu cells by flow cytometry.** *Antibody:* Rabbit anti-beta Catenin recombinant monoclonal antibody [BLR086G] (A700-086) or isotype control (unshaded). *Secondary:* DyLight® 650-conjugated goat anti-rabbit IgG (A120-101D5).



**Detection of mouse beta Catenin in FFPE plasmacytoma by IHC.** *Antibody:* Rabbit anti-beta Catenin recombinant monoclonal antibody [BLR086G] (A700-086 lot 1). *Secondary:* HRP-conjugated goat anti-rabbit IgG (A120-501P). *Substrate:* DAB.



**Detection of mouse beta Catenin (shaded) in FaDu cells by flow cytometry.** *Antibody:* Rabbit anti-beta Catenin recombinant monoclonal antibody [BLR086G] (A700-086) or isotype control (unshaded). *Secondary:* DyLight® 650-conjugated goat anti-rabbit IgG (A120-101D5).



**Detection of human and mouse beta-Catenin by western blot.** *Samples:* Whole cell lysate (50 µg) from Hep-G2, LNCaP, K-562, GaMG, Jurkat, A-549, MCF-7, HeLa, TCMK-1, and NIH 3T3 cells prepared using NETN lysis buffer. *Antibody:* Rabbit anti-beta-Catenin recombinant monoclonal antibody [BLR086G] (A700-086 lot 1) used at 1:1000. *Secondary:* HRP-conjugated goat anti-rabbit IgG (A120-101P). *Detection:* Chemiluminescence with an exposure time of 10 seconds.