

E-Cadherin Recombinant Monoclonal Antibody [BLR088G]

Rabbit Recombinant Monoclonal

Purified		Protein ID	NP_004351.1
Catalog No.	A700-088	GeneID	999
Lot No.	A700-088-1		



APPLICATIONS	WB, IP, IHC, ICC, IHC-IF
SPECIES REACTIVITY	Human, Mouse
AMOUNT	100 µl (50+ tests)
CONCENTRATION	250 µg/ml
STORAGE/SHELF LIFE	2 - 8° C / 1 year from date of receipt
PHYSICAL STATE	Liquid
BUFFER	Borate Buffered Saline (BBS) pH 8.2 with 0.1% BSA and 0.09% Sodium Azide
ISOTYPE	IgG
CLONE #	BLR088G
ORIGIN	USA
PRODUCTION PROCEDURES	Recombinant antibody was purified from cell culture supernatant.

Immunogen was a recombinant protein representing the extracellular domain of human E-Cadherin (residues 155-707, NP_004351.1).

APPLICATIONS Centrifuge tube to remove product from lid. Optimal working dilutions should be determined experimentally by the investigator. Prepare working dilution immediately before use.

Western Blot	1:1000
Immunoprecipitation	20 µl/1 mg lysate
Immunohistochemistry	1:100 to 1:500. Epitope retrieval with citrate buffer pH6.0 is recommended for FFPE tissue sections.
Immunocytochemistry	1:100 to 1:500. Epitope retrieval with citrate buffer pH6.0 is recommended for FFPE cell sections.
Immunofluorescence (IHC)	1:100 to 1:500. Epitope retrieval with citrate buffer pH6.0 is recommended for FFPE tissue sections.

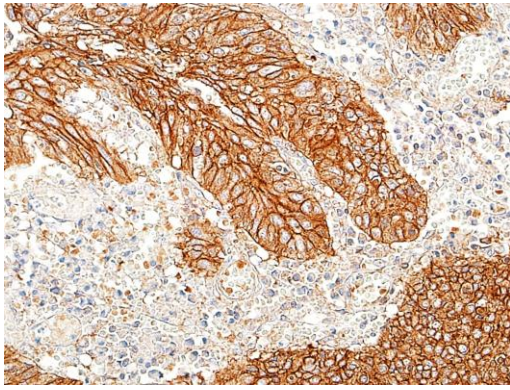
IHC HUMAN CONTROLS Lung Carcinoma, Melanoma, Prostate Carcinoma, Skin Squamous Cell Carcinoma, BeWo Cells, HCT 116 Cells, OVCAR-4 Cells, SW620 Cells

IHC MOUSE CONTROLS Skin

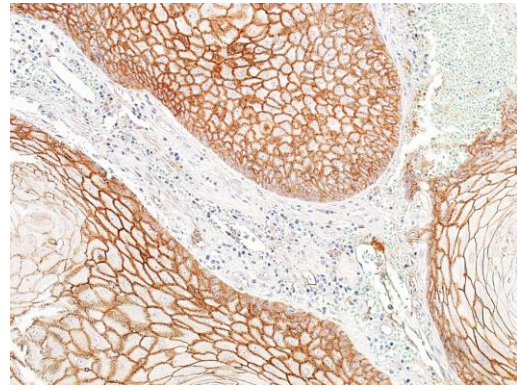
ADDITIONAL INFO <https://www.bethyl.com/product/A700-088>

Use the link above to view SDS, a current list of citations, and other product specific information.

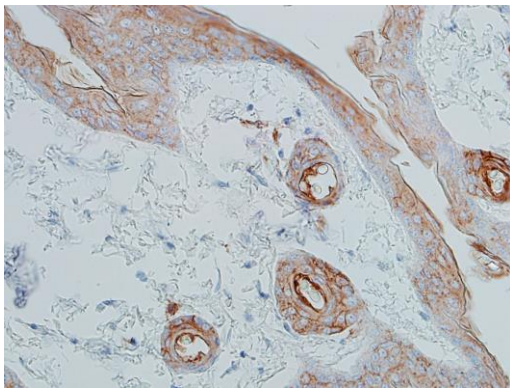
This document certifies that this product has met all of the quality control standards defined by Bethyl Laboratories, Inc.
Eric McIntush, PhD | Chief Scientific Officer Date: July 29, 2020



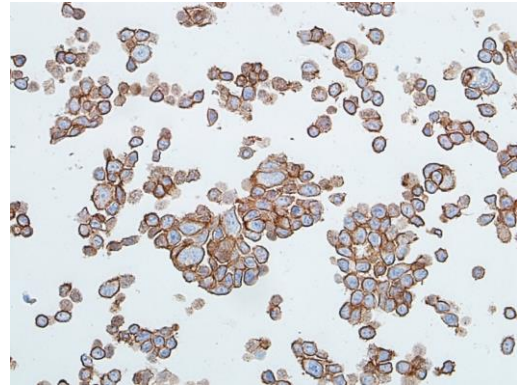
Detection of human E-Cadherin in FFPE lung carcinoma by IHC. *Antibody:* Rabbit anti-E-Cadherin recombinant monoclonal antibody [BLR088G] (A700-088 lot 1). *Secondary:* HRP-conjugated goat anti-rabbit IgG (A120-501P). *Substrate:* DAB.



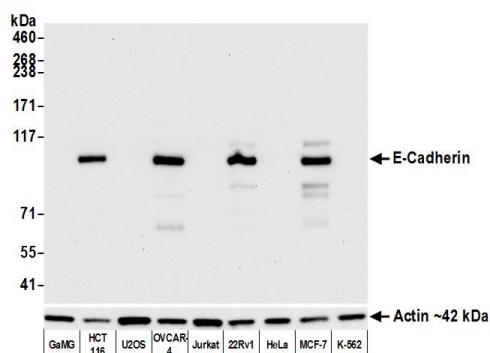
Detection of human E-Cadherin in FFPE squamous cell carcinoma by IHC. *Antibody:* Rabbit anti-E-Cadherin recombinant monoclonal antibody [BLR088G] (A700-088 lot 1). *Secondary:* HRP-conjugated goat anti-rabbit IgG (A120-501P). *Substrate:* DAB.



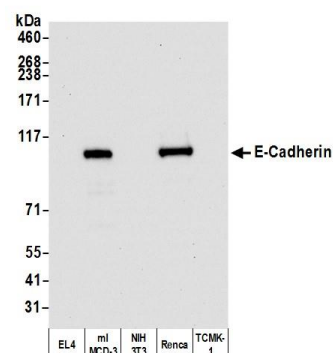
Detection of mouse E-Cadherin in FFPE skin by IHC. *Antibody:* Rabbit anti-E-Cadherin recombinant monoclonal antibody [BLR088G] (A700-088 lot 1). *Secondary:* HRP-conjugated goat anti-rabbit IgG (A120-501P). *Substrate:* DAB.



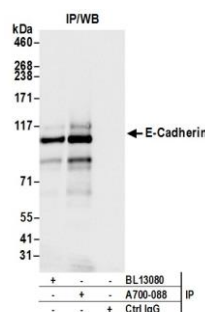
Detection of human E-Cadherin in FFPE HCT-116 cells by ICC. *Antibody:* Rabbit anti-E-Cadherin recombinant monoclonal antibody [BLR088G] (A700-088 lot 1). *Secondary:* HRP-conjugated goat anti-rabbit IgG (A120-501P). *Substrate:* DAB.



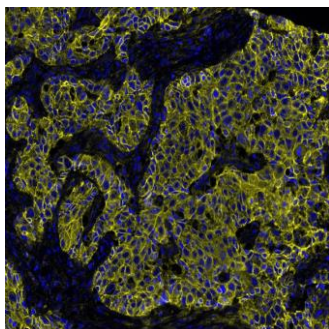
Detection of human E-Cadherin by western blot. Samples: Whole cell lysate (5 µg) from GaMG, HCT 116, U2OS, OVCAR-4, Jurkat, 22Rv1, HeLa, MCF-7, and K-562 cells prepared using NETN lysis buffer. **Antibody:** Rabbit anti-E-Cadherin recombinant monoclonal antibody [BLR088G] (A700-088 lot 1) used at 1:1000. **Secondary:** HRP-conjugated goat anti-rabbit IgG (A120-101P). Chemiluminescence with an exposure time of 10 seconds. Lower Panel: Rabbit anti-Actin recombinant monoclonal antibody [BLR057F] (A700-057).



Detection of mouse E-Cadherin by western blot. Samples: Whole cell lysate (5 µg) from EL4, m1MCD-3, NIH 3T3, Renca, and TCMK-1 cells prepared using NETN lysis buffer. **Antibody:** Rabbit anti-E-Cadherin recombinant monoclonal antibody [BLR088G] (A700-088 lot 1) used at 1:1000. **Secondary:** HRP-conjugated goat anti-rabbit IgG (A120-101P). Chemiluminescence with an exposure time of 10 seconds.



Detection of human E-Cadherin by western blot of immunoprecipitates. Samples: Whole cell lysate (1.0 mg per IP reaction; 20% of IP loaded) from MCF-7 cells prepared using NETN lysis buffer. **Antibodies:** Rabbit anti-E-Cadherin recombinant monoclonal antibody [BLR088G] (A700-088 lot 1) used for IP at 20 µl/mg lysate. E-Cadherin was also immunoprecipitated by rabbit anti-E-Cadherin antibody (BL13080). For blotting immunoprecipitated E-Cadherin, A700-088 was used at 1:1000. Chemiluminescence with an exposure time of 1 second.



Detection of human E-Cadherin in FFPE lung carcinoma by immunohistochemistry-IF. Antibody: Rabbit anti-E-Cadherin recombinant monoclonal antibody [BLR088G] (A700-088 Lot 1). **Secondary:** HRP-conjugated goat anti-rabbit IgG (A120-501P). **Substrate:** Opal™. Counterstain: DAPI.