

ALDH1A1 Recombinant Monoclonal Antibody [BLR089G]

Rabbit Recombinant Monoclonal

Purified Protein ID NP_000680.2
Catalog No. A700-089-T GeneID 216
Lot No. A700-089-T-1



APPLICATIONS WB, IP, IHC, ICC
SPECIES REACTIVITY Human
AMOUNT 10 µl (5+ tests)
CONCENTRATION 500 µg/ml
STORAGE/SHELF LIFE 2 – 8° C / 1 year from date of receipt
PHYSICAL STATE Liquid
BUFFER Borate Buffered Saline (BBS) pH 8.2 with 0.1% BSA and 0.09% Sodium Azide
ISOTYPE IgG
CLONE # BLR089G
ORIGIN USA
PRODUCTION PROCEDURES Recombinant antibody was purified from cell culture supernatant.

Immunogen was a peptide representing a region between residue 300 and 350 of human aldehyde dehydrogenase 1 family member A1 using the numbering in entry NP_000680.2 (Gene ID 216).

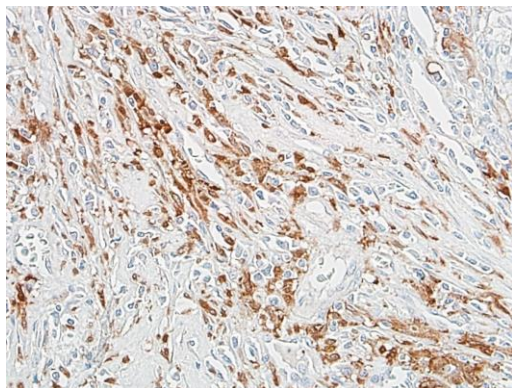
APPLICATIONS Centrifuge tube to remove product from lid. Optimal working dilutions should be determined experimentally by the investigator. Prepare working dilution immediately before use.

Western Blot 1:1000
Immunoprecipitation 12 µl/1 mg lysate
Immunohistochemistry 1:100 to 1:500. Epitope retrieval with citrate buffer pH6.0 is recommended for FFPE tissue sections.
Immunocytochemistry 1:100 to 1:500. Epitope retrieval with citrate buffer pH6.0 is recommended for FFPE cell sections.

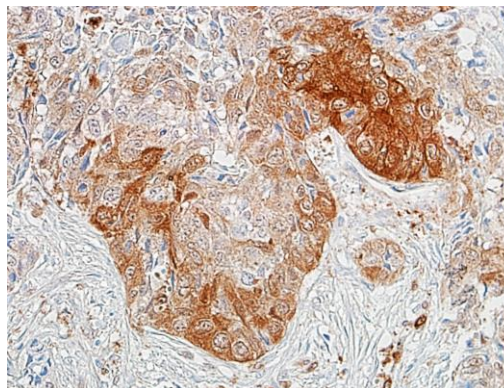
IHC HUMAN CONTROLS Breast Carcinoma, Colon Carcinoma, Lung Carcinoma, NCI-H2286, 786-O Cells, BJ Cells, HT-29 Cells

ADDITIONAL INFO <https://www.bethyl.com/product/A700-089-T>
Use the link above to view SDS, a current list of citations, and other product specific information.

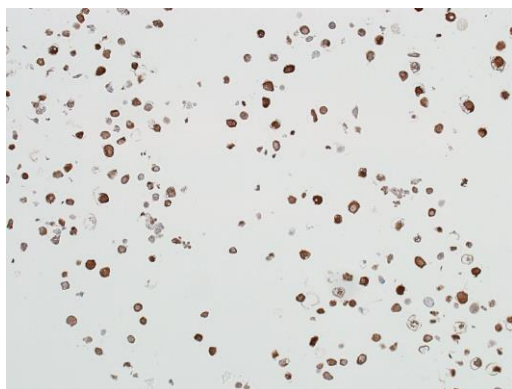
This document certifies that this product has met all of the quality control standards defined by Bethyl Laboratories, Inc.
Eric McIntush, PhD | Chief Scientific Officer Date: September 4, 2019



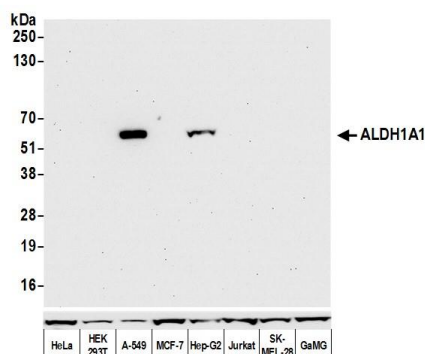
Detection of human ALDH1A1 in FFPE breast carcinoma by IHC. *Antibody:* Rabbit anti-ALDH1A1 recombinant monoclonal antibody [BLR089G] (A700-089-T lot 1). *Secondary:* HRP-conjugated goat anti-rabbit IgG (A120-501P). *Substrate:* DAB.



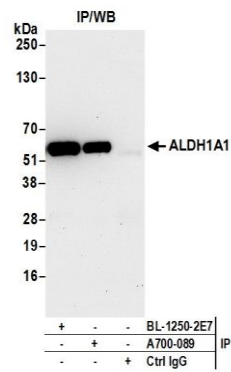
Detection of human ALDH1A1 in FFPE lung carcinoma by IHC. *Antibody:* Rabbit anti-ALDH1A1 recombinant monoclonal antibody [BLR089G] (A700-089-T lot 1). *Secondary:* HRP-conjugated goat anti-rabbit IgG (A120-501P). *Substrate:* DAB.



Detection of human ALDH1A1 in FFPE NCI-H2286 cells by ICC. *Antibody:* Rabbit anti-ALDH1A1 recombinant monoclonal antibody [BLR089G] (A700-089-T lot 1). *Secondary:* HRP-conjugated goat anti-rabbit IgG (A120-501P). *Substrate:* DAB.



Detection of human ALDH1A1 by western blot. *Samples:* Whole cell lysate (50 µg) from HeLa, HEK293T, MCF-7, Hep-G2, Jurkat, SK-MEL-28, GaMG and (10 µg) A-549 cells prepared using NETN lysis buffer. *Antibody:* Rabbit anti-ALDH1A1 recombinant monoclonal antibody [BLR089G] (A700-089-T lot 1) used at 1:1000. *Secondary:* HRP-conjugated goat anti-rabbit IgG (A120-101P). Chemiluminescence with an exposure time of 30 seconds. *Lower Panel:* Rabbit anti-Cytoskeletal Actin recombinant monoclonal antibody (A700-057).



Detection of human ALDH1A1 by western blot of immunoprecipitates. *Samples:* Whole cell lysate (1.0 mg per IP reaction; 20% of IP loaded) from A-549 cells prepared using NETN lysis buffer. *Antibodies:* Rabbit anti-ALDH1A1 recombinant monoclonal antibody [BLR089G] (A700-089-T lot 1) used for IP at 12 μ l per reaction. ALDH1A1 was also immunoprecipitated by rabbit anti-ALDH1A1 recombinant monoclonal antibody [BL-1250-2E7]. For blotting immunoprecipitated ALDH1A1, A700-089-T was used at 1:1000. Chemiluminescence with an exposure time of 30 seconds.