

# CEACAM1 Recombinant Monoclonal Antibody [BLR090G]

Rabbit Recombinant Monoclonal

Purified Protein ID NP\_001020083.1  
Catalog No. A700-090-T GeneID 634  
Lot No. A700-090-T-1



**APPLICATIONS** WB, IP, IHC, ICC  
**SPECIES REACTIVITY** Human  
**AMOUNT** 10 µl (5+ tests)  
**CONCENTRATION** 1000 µg/ml  
**STORAGE/SHELF LIFE** 2 – 8° C / 1 year from date of receipt  
**PHYSICAL STATE** Liquid  
**BUFFER** Borate Buffered Saline (BBS) pH 8.2 with 0.09% Sodium Azide, BSA Free  
**ISOTYPE** IgG  
**CLONE #** BLR090G  
**ORIGIN** USA  
**PRODUCTION PROCEDURES** Recombinant antibody was purified from cell culture supernatant.

Immunogen was a recombinant protein representing the extracellular domain of human CEACAM1 (residues 35–433, NP\_001020083.1).

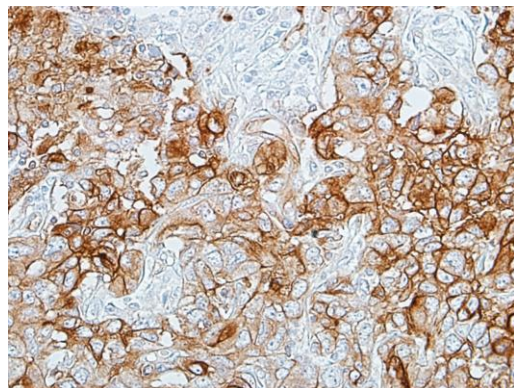
**APPLICATIONS** Centrifuge tube to remove product from lid. Optimal working dilutions should be determined experimentally by the investigator. Prepare working dilution immediately before use.

Western Blot 1:1000  
Immunoprecipitation 6 µl/1 mg lysate  
Immunohistochemistry 1:100 to 1:500. Epitope retrieval with citrate buffer pH6.0 is recommended for FFPE tissue sections.  
Immunocytochemistry 1:100 to 1:500. Epitope retrieval with citrate buffer pH6.0 is recommended for FFPE cell sections.

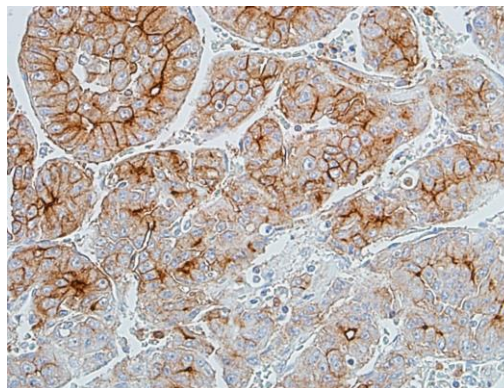
**IHC HUMAN CONTROLS** Breast Carcinoma, Melanoma, Prostate Carcinoma, Skin Carcinoma, BeWo Cells, HCT 116 Cells, OVCAR-4 Cells, SW620 Cells

**ADDITIONAL INFO** <https://www.bethyl.com/product/A700-090-T>  
Use the link above to view SDS, a current list of citations, and other product specific information.

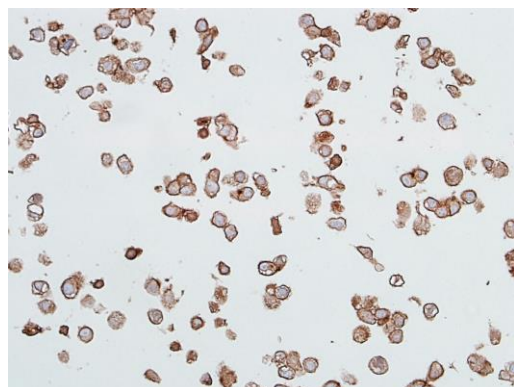
This document certifies that this product has met all of the quality control standards defined by Bethyl Laboratories, Inc.  
Eric McIntush, PhD | Chief Scientific Officer Date: January 24, 2020



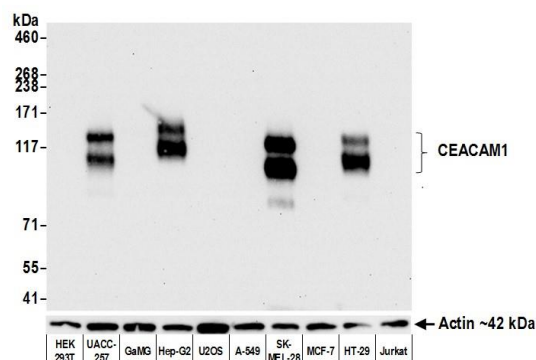
**Detection of human CEACAM1 in FFPE breast carcinoma by IHC.** *Antibody:* Rabbit anti-CEACAM1 recombinant monoclonal antibody [BLR090G] (A700-090-T lot 1). *Secondary:* HRP-conjugated goat anti-rabbit IgG (A120-501P). *Substrate:* DAB.



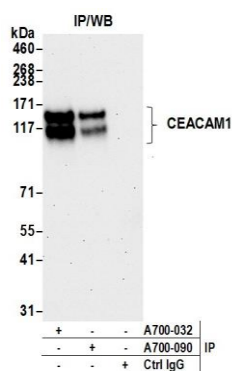
**Detection of human CEACAM1 in FFPE liver carcinoma by IHC.** *Antibody:* Rabbit anti-CEACAM1 recombinant monoclonal antibody [BLR090G] (A700-090-T lot 1). *Secondary:* HRP-conjugated goat anti-rabbit IgG (A120-501P). *Substrate:* DAB.



**Detection of human CEACAM1 in FFPE Hep-G2 cells by ICC.** *Antibody:* Rabbit anti-CEACAM1 recombinant monoclonal antibody [BLR090G] (A700-090-T lot 1). *Secondary:* HRP-conjugated goat anti-rabbit IgG (A120-501P). *Substrate:* DAB.



**Detection of human CEACAM1 by western blot.** *Samples:* Whole cell lysate (5  $\mu$ g) from HEK293T, UACC-257, GaMG, Hep-G2, U2OS, A-549, SK-MEL-28, MCF-7, HT-29, and Jurkat cells prepared using NETN lysis buffer. *Antibody:* Rabbit anti-CEACAM1 recombinant monoclonal antibody [BLR090G] (A700-090-T lot 1) used at 1:1000. *Secondary:* HRP-conjugated goat anti-rabbit IgG (A120-101P). Chemiluminescence with an exposure time of 10 seconds. Lower Panel: Rabbit anti-Actin recombinant monoclonal antibody [BLR034F] (A700-034).



**Detection of human CEACAM1 by western blot of immunoprecipitates.** *Samples:* Whole cell lysate (1.0 mg per IP reaction; 20% of IP loaded) from UACC-257 cells prepared using NETN lysis buffer. *Antibodies:* Rabbit anti-CEACAM1 recombinant monoclonal antibody [BLR090G] (A700-090-T lot 1) used for IP at 6  $\mu$ l per reaction. CEACAM1 was also immunoprecipitated by rabbit anti-CEACAM1 /5 recombinant monoclonal antibody [BLR032F] (A700-032). For blotting immunoprecipitated CEACAM1, A700-090-T was used at 1:1000. Chemiluminescence with an exposure time of 30 seconds.