

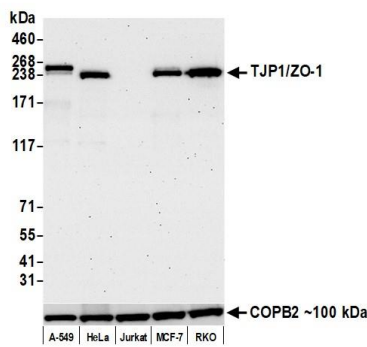
TJP1 /ZO-1 Recombinant Monoclonal Antibody [BLR092G]

Rabbit Recombinant Monoclonal

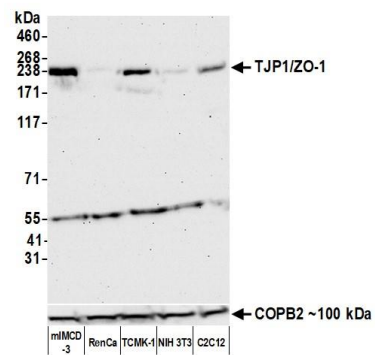
Purified Protein ID NP_003248.3
Catalog No. A700-092-T GenelD 7082
Lot No. A700-092-T-3

APPLICATIONS	WB, IP, IHC, ICC, IHC-IF
SPECIES REACTIVITY	Human, Mouse
AMOUNT	10 µl (5+ tests)
CONCENTRATION	500 µg/ml
STORAGE/SHELF LIFE	2 – 8°C / 1 year from date of receipt
PHYSICAL STATE	Liquid
BUFFER	Borate Buffered Saline (BBS) pH 8.2 with 0.1% BSA and 0.09% Sodium Azide
ISOTYPE	IgG
CLONE #	BLR092G
ORIGIN	USA
PRODUCTION PROCEDURES	Recombinant antibody was purified from cell culture supernatant. Immunogen was a peptide representing a region between residue 650 and 700 of human tight junction protein ZO-1 using the numbering given in entry NP_003248.3 (Gene ID 7082).
APPLICATIONS	Centrifuge tube to remove product from lid. Optimal working dilutions should be determined experimentally by the investigator. Prepare working dilution immediately before use. Western Blot 1:1000 Immunoprecipitation 12 µl/1 mg lysate Immunohistochemistry 1:100 to 1:500. Epitope retrieval with citrate buffer pH6.0 is recommended for FFPE tissue sections. Immunocytochemistry 1:100 to 1:500. Epitope retrieval with citrate buffer pH6.0 is recommended for FFPE cell sections. Immunofluorescence (IHC) 1:100 to 1:500. Epitope retrieval with citrate buffer pH6.0 is recommended for FFPE tissue sections.
IHC HUMAN CONTROLS	Kidney, Liver Carcinoma, Ovarian Carcinoma, Prostate Carcinoma, Renal Cell Carcinoma, Seminoma, A-549 Cells
ADDITIONAL INFO	https://www.bethyl.com/product/A700-092-T Use the link above to view SDS, a current list of citations, and other product specific information.

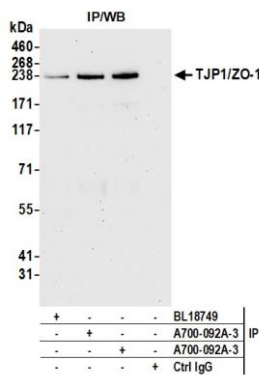
This document certifies that this product has met all of the quality control standards defined by Bethyl Laboratories, Inc.
Michael Spencer, PhD Date: April 12, 2022



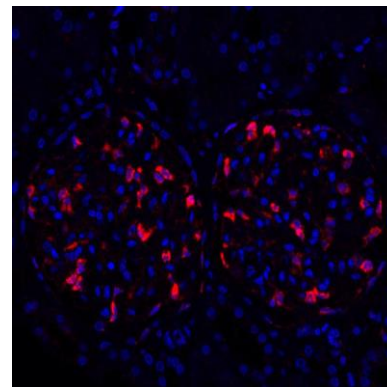
Detection of human TJP1/ZO-1 by western blot. *Samples:* Whole cell lysate (25 µg) from A-549, HeLa, Jurkat, MCF-7, and RKO cells prepared using NETN lysis buffer. *Antibody:* Rabbit anti-TJP1/ZO-1 recombinant monoclonal antibody [BLR092G] (A700-092A-T lot 3) used at 1:1000. *Secondary:* HRP-conjugated goat anti-rabbit IgG (A120-101P). Chemiluminescence with an exposure time of 75 seconds. Lower Panel: Rabbit anti-COPB2 antibody (A304-523A).



Detection of mouse TJP1/ZO-1 by western blot. *Samples:* Whole cell lysate (25 µg) from m1MCD-3, RenCa, TCMK-1, NIH 3T3, and C2C12 cells prepared using NETN lysis buffer. *Antibody:* Rabbit anti-TJP1/ZO-1 recombinant monoclonal antibody [BLR092G] (A700-092A-T lot 3) used at 1:1000. *Secondary:* HRP-conjugated goat anti-rabbit IgG (A120-101P). Chemiluminescence with an exposure time of 75 seconds. Lower Panel: Rabbit anti-COPB2 antibody (A304-523A).



Detection of human TJP1/ZO-1 by western blot of immunoprecipitates. *Samples:* Whole cell lysate (1.0 mg per IP reaction; 10% of IP loaded) from MCF-7 cells prepared using NETN lysis buffer. *Antibodies:* Rabbit anti-TJP1/ZO-1 recombinant monoclonal antibody [BLR092G] (A700-092A-T lot 3) used for IP at 20 µl/mg lysate. TJP1/ZO-1 was also immunoprecipitated by a previous lot of this antibody (A700-092A-T lot 2) and a second antibody against a different epitope of TJP1/ZO-1 (BL18749). For blotting immunoprecipitated TJP1/ZO-1, A700-092A-T was used at 1:1000. Chemiluminescence with an exposure time of 30 seconds.



Detection of human TJP1/ZO-1 in FFPE kidney by immunohistochemistry-IF. *Antibody:* Rabbit anti-TJP1/ZO-1 recombinant monoclonal antibody [BLR092G] (A700-092-T Lot 1). *Secondary:* HRP-conjugated goat anti-rabbit IgG (A120-501P). *Substrate:* Opal™. Counterstain: DAPI.