

CD133 Recombinant Monoclonal Antibody [BLR093G]

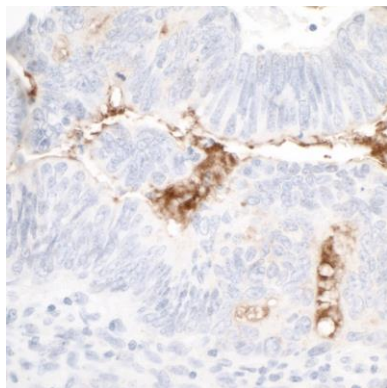
Rabbit Recombinant Monoclonal

Purified	Protein ID	NP_006008.1
Catalog No. A700-093-T	GeneID	8842
Lot No. A700-093-T-1		

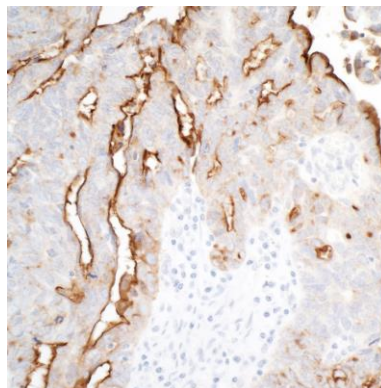


APPLICATIONS	WB, IHC, ICC
SPECIES REACTIVITY	Human
AMOUNT	10 µl (5+ tests)
CONCENTRATION	250 µg/ml
STORAGE/SHELF LIFE	2 – 8° C / 1 year from date of receipt
PHYSICAL STATE	Liquid
BUFFER	Borate Buffered Saline (BBS) pH 8.2 with 0.1% BSA and 0.09% Sodium Azide
ISOTYPE	IgG
CLONE #	BLR093G
ORIGIN	USA
PRODUCTION PROCEDURES	Recombinant antibody was purified from cell culture supernatant. Immunogen was a peptide representing a region between residue 350 and 400 of human prominin-1 (CD133) using the numbering given in entry NP_006008.1 (Gene ID 8842).
APPLICATIONS	Centrifuge tube to remove product from lid. Optimal working dilutions should be determined experimentally by the investigator. Prepare working dilution immediately before use. Western Blot 1:1000 Immunohistochemistry 1:100 to 1:500. Epitope retrieval with citrate buffer pH6.0 is recommended for FFPE tissue sections. Immunocytochemistry 1:100 to 1:500. Epitope retrieval with citrate buffer pH6.0 is recommended for FFPE cell sections.
IHC HUMAN CONTROLS	Breast Carcinoma, Colon Carcinoma, Kidney, Ovarian Carcinoma, OVCAR-4 Cells, SW620 Cells
ADDITIONAL INFO	https://www.bethyl.com/product/A700-093-T Use the link above to view SDS, a current list of citations, and other product specific information.

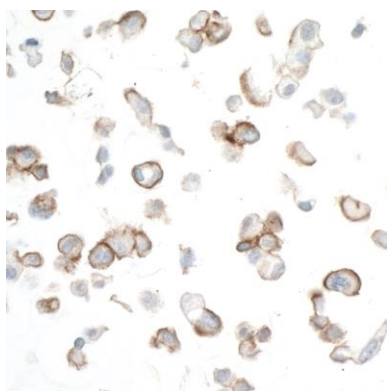
This document certifies that this product has met all of the quality control standards defined by Bethyl Laboratories, Inc.
Eric McIntush, PhD | Chief Scientific Officer Date: November 14, 2019



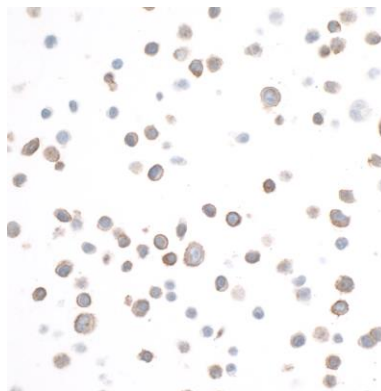
Detection of human CD133 in FFPE colon carcinoma by IHC. *Antibody:* Rabbit anti-CD133 recombinant monoclonal antibody [BLR093G] (A700-093-T lot 1). *Secondary:* HRP-conjugated goat anti-rabbit IgG (A120-501P). *Substrate:* DAB.



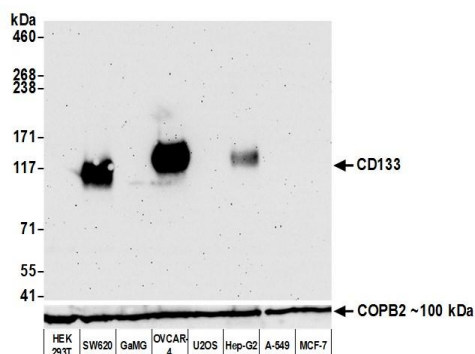
Detection of human CD133 in FFPE ovarian carcinoma by IHC. *Antibody:* Rabbit anti-CD133 recombinant monoclonal antibody [BLR093G] (A700-093-T lot 1). *Secondary:* HRP-conjugated goat anti-rabbit IgG (A120-501P). *Substrate:* DAB.



Detection of human CD133 in FFPE OVCAR-4 cells by ICC. *Antibody:* Rabbit anti-CD133 recombinant monoclonal antibody [BLR093G] (A700-093-T lot 1). *Secondary:* HRP-conjugated goat anti-rabbit IgG (A120-501P). *Substrate:* DAB.



Detection of human CD133 in FFPE SW620 cells by ICC. *Antibody:* Rabbit anti-CD133 recombinant monoclonal antibody [BLR093G] (A700-093-T lot 1). *Secondary:* HRP-conjugated goat anti-rabbit IgG (A120-501P). *Substrate:* DAB.



Detection of human CD133 by western blot. *Samples:* Whole cell lysate (50 µg) from HEK293T, SW620, GaMG, OVCAR-4, U2OS, Hep-G2, A-549, and MCF-7 cells prepared using NETN lysis buffer. *Antibody:* Rabbit anti-CD133 recombinant monoclonal antibody [BLR093G] (A700-093-T lot 1) used at 1:1000. *Secondary:* HRP-conjugated goat anti-rabbit IgG (A120-101P). Chemiluminescence with an exposure time of 3 minutes. Lower Panel: Rabbit anti-COPB2 antibody (A304-523A).