

MEK1 Recombinant Monoclonal Antibody [BLR095G]

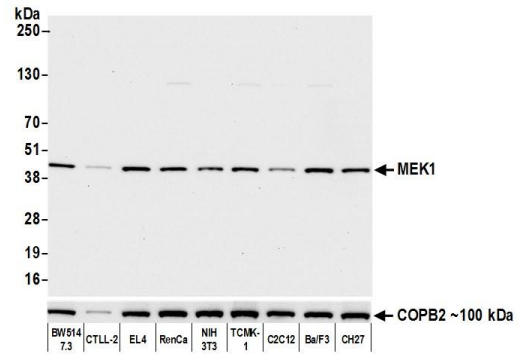
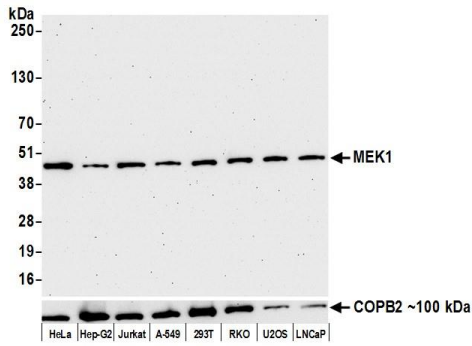
Rabbit Recombinant Monoclonal

Purified Protein ID NP_002746.1
Catalog No. A700-095-T GeneID 5604
Lot No. A700-095-T-1



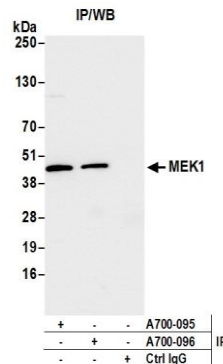
APPLICATIONS	WB, IP
SPECIES REACTIVITY	Human, Mouse
AMOUNT	20 µl (2 blots)
CONCENTRATION	100 µg/ml
STORAGE/SHELF LIFE	2 – 8° C / 1 year from date of receipt
PHYSICAL STATE	Liquid
BUFFER	Borate Buffered Saline (BBS) pH 8.2 with 0.1% BSA and 0.09% Sodium Azide
ISOTYPE	IgG
CLONE #	BLR095G
ORIGIN	USA
PRODUCTION PROCEDURES	Recombinant antibody was purified from cell culture supernatant. Immunogen was a peptide representing a region between residues 1 and 50 of human dual specificity mitogen-activated protein kinase kinase 1 (MEK1) using the numbering given in entry NP_002746.1 (Gene ID 5604).
APPLICATIONS	Centrifuge tube to remove product from lid. Optimal working dilutions should be determined experimentally by the investigator. Prepare working dilution immediately before use. Western Blot 1:1000 Immunoprecipitation 20 µl/1 mg lysate
ADDITIONAL INFO	https://www.bethyl.com/product/A700-095-T Use the link above to view SDS, a current list of citations, and other product specific information.

This document certifies that this product has met all of the quality control standards defined by Bethyl Laboratories, Inc.
Eric McIntush, PhD | Chief Scientific Officer Date: October 15, 2019



Detection of human MEK1 by western blot. *Samples:* Whole cell lysate (10 µg) from HeLa, Hep-G2, Jurkat, A-549, HEK293T, RKO, U2OS, and LNCaP cells prepared using NETN lysis buffer. *Antibody:* Rabbit anti-MEK1 recombinant monoclonal antibody [BLR095G] (A700-095-T lot 1) used at 1:1000. *Secondary:* HRP-conjugated goat anti-rabbit IgG (A120-101P). Chemiluminescence with an exposure time of 75 seconds. Lower Panel: Rabbit anti-COPB2 (A305-523A).

Detection of mouse MEK1 by western blot. *Samples:* Whole cell lysate (50 µg) from BW5147.3, CTLL-2, EL4, RenCa, NIH 3T3, TCMK-1, C2C12, Ba/F3, and CH27 cells prepared using NETN lysis buffer. *Antibody:* Rabbit anti-MEK1 recombinant monoclonal antibody [BLR095G] (A700-095-T lot 1) used at 1:1000. *Secondary:* HRP-conjugated goat anti-rabbit IgG (A120-101P). Chemiluminescence with an exposure time of 10 seconds. Lower Panel: Rabbit anti-COPB2 (A305-523A).



Detection of human MEK1 by western blot of immunoprecipitates. *Samples:* Whole cell lysate (1.0 mg per IP reaction; 20% of IP loaded) from HeLa cells prepared using NETN lysis buffer. *Antibodies:* Rabbit anti-MEK1 recombinant monoclonal antibody [BLR095G] (A700-095-T lot 1) used for IP at 20 µl/mg lysate. MEK1 was also immunoprecipitated by rabbit anti-MEK1 recombinant monoclonal antibody [BLR096G] (A700-096). For blotting immunoprecipitated MEK1, A700-095-T was used at 1:1000. Chemiluminescence with an exposure time of 10 seconds.