

STAT3 Recombinant Monoclonal Antibody [BLR098G]

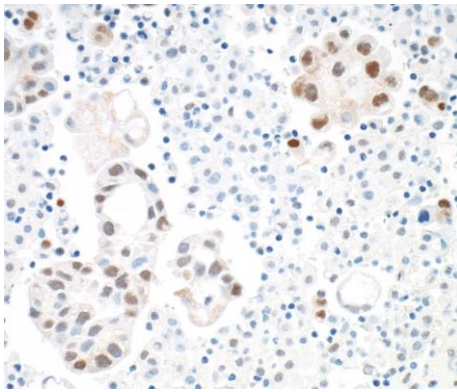
Rabbit Recombinant Monoclonal

Purified Protein ID NP_001356441.1
Catalog No. A700-098 GeneID 6774
Lot No. A700-098-1

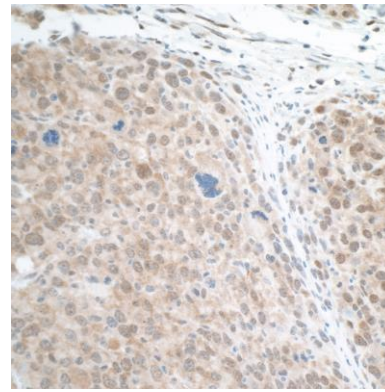


| | |
|------------------------------|--|
| APPLICATIONS | WB, IP, IHC, ICC |
| SPECIES REACTIVITY | Human, Mouse |
| AMOUNT | 100 µl (50+ tests) |
| CONCENTRATION | 1000 µg/ml |
| STORAGE/SHELF LIFE | 2 – 8° C / 1 year from date of receipt |
| PHYSICAL STATE | Liquid |
| BUFFER | Borate Buffered Saline (BBS) pH 8.2 with 0.09% Sodium Azide, BSA Free |
| ISOTYPE | IgG |
| CLONE # | BLR098G |
| ORIGIN | USA |
| PRODUCTION PROCEDURES | Recombinant antibody was purified from cell culture supernatant. Immunogen was a peptide representing a region between residue 175 and 225 of human signal transducer and activator of transcription 3 (STAT3) using the numbering given in entry NP_001356441.1 (Gene ID 6774). |
| APPLICATIONS | Centrifuge tube to remove product from lid. Optimal working dilutions should be determined experimentally by the investigator. Prepare working dilution immediately before use. Western Blot 1:1,000 Immunoprecipitation 6 µl/1 mg lysate Immunohistochemistry 1:100 to 1:500. Epitope retrieval with citrate buffer pH6.0 is recommended for FFPE tissue sections. Immunocytochemistry 1:100 to 1:500. Epitope retrieval with citrate buffer pH6.0 is recommended for FFPE cell sections. |
| IHC HUMAN CONTROLS | Breast Carcinoma, Colon Carcinoma, Lung Carcinoma, Melanoma, Ovarian Carcinoma, Prostate Carcinoma, Renal Cell Carcinoma, NCI-H1703 Cells, NCI-H226 Cells, UACC-62 Cells |
| IHC MOUSE CONTROLS | Renal Cell Carcinoma, RenCa Cells |
| ADDITIONAL INFO | https://www.bethyl.com/product/A700-098 Use the link above to view SDS, a current list of citations, and other product specific information. |

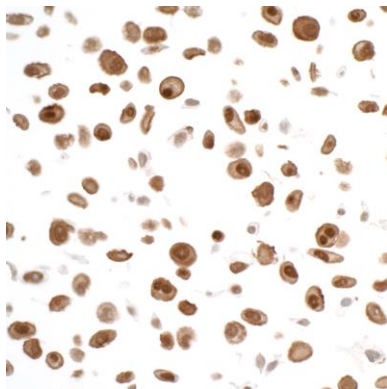
This document certifies that this product has met all of the quality control standards defined by Bethyl Laboratories, Inc.
Eric McIntush, PhD | Chief Scientific Officer Date: January 24, 2020



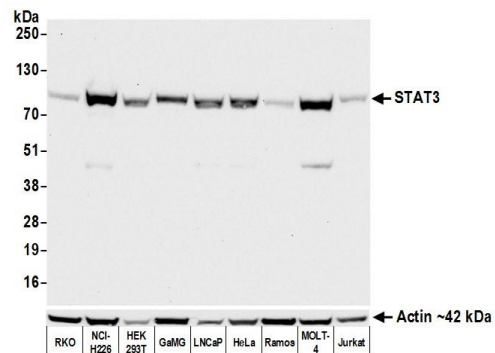
Detection of human STAT3 in FFPE lung carcinoma by IHC. *Antibody:* Rabbit anti-STAT3 recombinant monoclonal antibody [BLR098G] (A700-098 lot 1). *Secondary:* HRP-conjugated goat anti-rabbit IgG (A120-501P). *Substrate:* DAB.



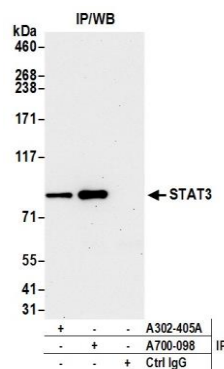
Detection of mouse STAT3 in FFPE renal cell carcinoma by IHC. *Antibody:* Rabbit anti-STAT3 recombinant monoclonal antibody [BLR098G] (A700-098 lot 1). *Secondary:* HRP-conjugated goat anti-rabbit IgG (A120-501P). *Substrate:* DAB.



Detection of human STAT3 in FFPE H226 cells by ICC. *Antibody:* Rabbit anti-STAT3 recombinant monoclonal antibody [BLR098G] (A700-098 lot 1). *Secondary:* HRP-conjugated goat anti-rabbit IgG (A120-501P). *Substrate:* DAB.



Detection of human STAT3 by western blot. *Samples:* Whole cell lysate (50 µg) from RKO, NCI-H226, HEK293T, GaMG, LNCaP, HeLa, Ramos, MOLT-4, and Jurkat cells prepared using NETN lysis buffer. *Antibody:* Rabbit anti-STAT3 recombinant monoclonal antibody [BLR098G] (A700-098 lot 1) used at 1:1000. *Secondary:* HRP-conjugated goat anti-rabbit IgG (A120-101P). Chemiluminescence with an exposure time of 10 seconds. Lower Panel: Rabbit anti-Actin recombinant monoclonal antibody [BLR057F] (A700-057).



Detection of human STAT3 by western blot of immunoprecipitates. *Samples:* Whole cell lysate (1.0 mg per IP reaction; 20% of IP loaded) from NCI-H226 cells prepared using NETN lysis buffer. *Antibodies:* Rabbit anti-STAT3 recombinant monoclonal antibody [BLR098G] (A700-098 lot 1) used for IP at 6 μ l per reaction. STAT3 was also immunoprecipitated by rabbit anti-STAT3 antibody A302-405A. For blotting immunoprecipitated STAT3, A700-098 was used at 1:1000. Chemiluminescence with an exposure time of 30 seconds.