

STAT3 Recombinant Monoclonal Antibody [BLR098G]

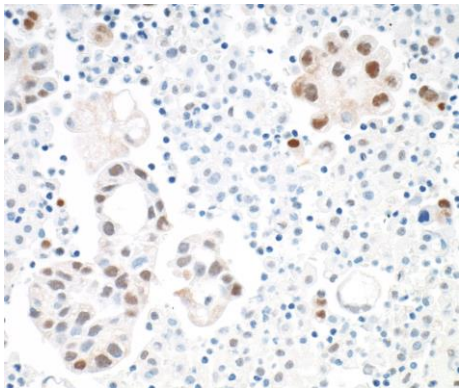
Rabbit Recombinant Monoclonal

Purified Protein ID NP_001356441.1
Catalog No. A700-098-T GeneID 6774
Lot No. A700-098-T-1

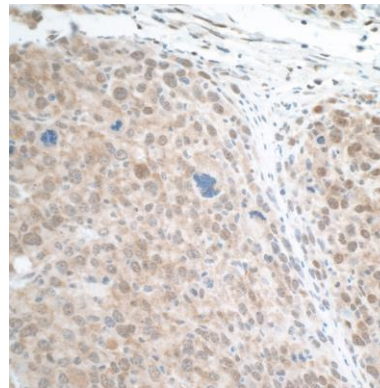


APPLICATIONS	WB, IP, IHC, ICC
SPECIES REACTIVITY	Human, Mouse
AMOUNT	10 µl (5+ tests)
CONCENTRATION	1000 µg/ml
STORAGE/SHELF LIFE	2 – 8° C / 1 year from date of receipt
PHYSICAL STATE	Liquid
BUFFER	Borate Buffered Saline (BBS) pH 8.2 with 0.09% Sodium Azide, BSA Free
ISOTYPE	IgG
CLONE #	BLR098G
ORIGIN	USA
PRODUCTION PROCEDURES	Recombinant antibody was purified from cell culture supernatant. Immunogen was a peptide representing a region between residue 175 and 225 of human signal transducer and activator of transcription 3 (STAT3) using the numbering given in entry NP_001356441.1 (Gene ID 6774).
APPLICATIONS	Centrifuge tube to remove product from lid. Optimal working dilutions should be determined experimentally by the investigator. Prepare working dilution immediately before use. Western Blot 1:1,000 Immunoprecipitation 6 µl/1 mg lysate Immunohistochemistry 1:100 to 1:500. Epitope retrieval with citrate buffer pH6.0 is recommended for FFPE tissue sections. Immunocytochemistry 1:100 to 1:500. Epitope retrieval with citrate buffer pH6.0 is recommended for FFPE cell sections.
IHC HUMAN CONTROLS	Breast Carcinoma, Colon Carcinoma, Lung Carcinoma, Melanoma, Ovarian Carcinoma, Prostate Carcinoma, Renal Cell Carcinoma, NCI-H1703 Cells, NCI-H226 Cells, UACC-62 Cells
IHC MOUSE CONTROLS	Renal Cell Carcinoma, RenCa Cells
ADDITIONAL INFO	https://www.bethyl.com/product/A700-098-T Use the link above to view SDS, a current list of citations, and other product specific information.

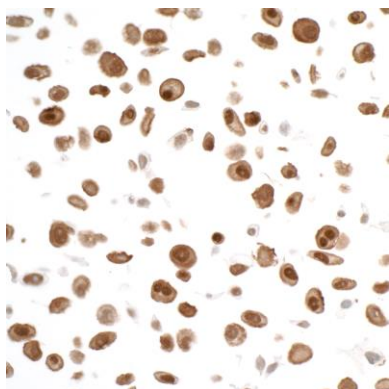
This document certifies that this product has met all of the quality control standards defined by Bethyl Laboratories, Inc.
Eric McIntush, PhD | Chief Scientific Officer Date: January 24, 2020



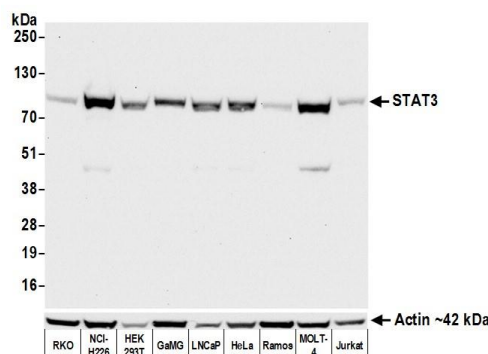
Detection of human STAT3 in FFPE lung carcinoma by IHC. *Antibody:* Rabbit anti-STAT3 recombinant monoclonal antibody [BLR098G] (A700-098-T lot 1). *Secondary:* HRP-conjugated goat anti-rabbit IgG (A120-501P). *Substrate:* DAB.



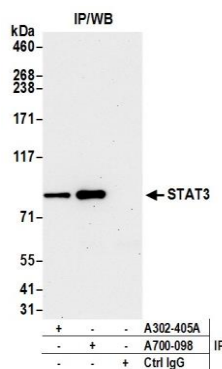
Detection of mouse STAT3 in FFPE renal cell carcinoma by IHC. *Antibody:* Rabbit anti-STAT3 recombinant monoclonal antibody [BLR098G] (A700-098-T lot 1). *Secondary:* HRP-conjugated goat anti-rabbit IgG (A120-501P). *Substrate:* DAB.



Detection of human STAT3 in FFPE H226 cells by ICC. *Antibody:* Rabbit anti-STAT3 recombinant monoclonal antibody [BLR098G] (A700-098-T lot 1). *Secondary:* HRP-conjugated goat anti-rabbit IgG (A120-501P). *Substrate:* DAB.



Detection of human STAT3 by western blot. *Samples:* Whole cell lysate (50 µg) from RKO, NCI-H226, HEK293T, GaMG, LNCaP, HeLa, Ramos, MOLT-4, and Jurkat cells prepared using NETN lysis buffer. *Antibody:* Rabbit anti-STAT3 recombinant monoclonal antibody [BLR098G] (A700-098-T lot 1) used at 1:1000. *Secondary:* HRP-conjugated goat anti-rabbit IgG (A120-101P). Chemiluminescence with an exposure time of 10 seconds. Lower Panel: Rabbit anti-Actin recombinant monoclonal antibody [BLR057F] (A700-057).



Detection of human STAT3 by western blot of immunoprecipitates. *Samples:* Whole cell lysate (1.0 mg per IP reaction; 20% of IP loaded) from NCI-H226 cells prepared using NETN lysis buffer. *Antibodies:* Rabbit anti-STAT3 recombinant monoclonal antibody [BLR098G] (A700-098-T lot 1) used for IP at 6 μ l per reaction. STAT3 was also immunoprecipitated by rabbit anti-STAT3 antibody A302-405A. For blotting immunoprecipitated STAT3, A700-098-T was used at 1:1000. Chemiluminescence with an exposure time of 30 seconds.